

jaga

CLIMATE DESIGNERS

STRADA

**INSTALLATION AND
MAINTENANCE INSTRUCTIONS**
LOW-H₂O RADIATOR
FOR HEATING ONLY



Tested in accordance
with EN442

**UK
CA**

CONTENTS

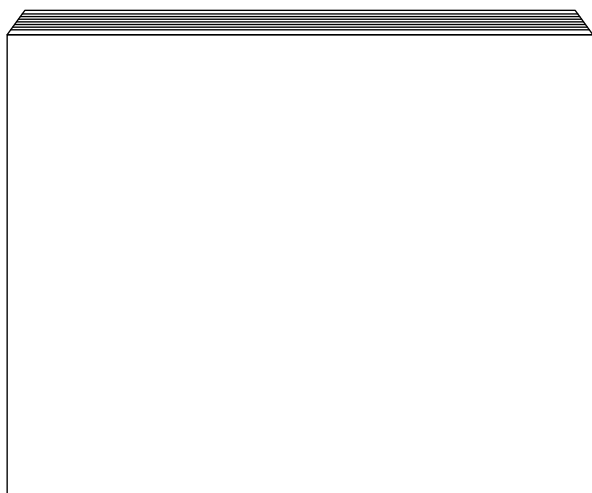
1. INTRODUCTION.....	4
2. COMPONENT PARTS.....	4
3. TOOLS REQUIRED.....	4
4. INSTALLATION.....	5
5. FITTING THE CASING.....	8
6. REMOVING THE GRILLE	9
7. OPTIONAL EXTRAS	10
8. FURTHER GUIDANCE.....	11
9. MAINTENANCE	12
10. GUARANTEE	12
11. FAULT FINDING.....	13
12. TERMS & CONDITIONS.....	14

1. INTRODUCTION

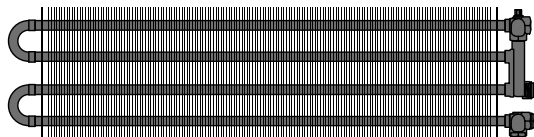
Thank you for choosing our STRADA Low-H₂O radiator. If installed and maintained correctly, it will give you many years of efficient and safe heating.

2. COMPONENT PARTS

Casing



Heating Element



Left Hand Bracket



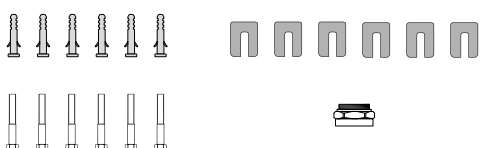
Right Hand Bracket



For lengths 1400mm to 2200mm, a third bracket is supplied.

For lengths 2400mm and over, a fourth bracket is supplied.

Fixing Pack



Extended Air Vent



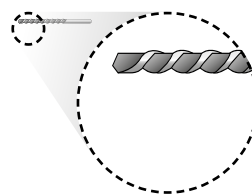
The installation of STRADA Low-H₂O radiators should be in accordance with these installation instructions and the work completed by a competent person.

3. TOOLS REQUIRED

Drill



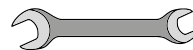
8mm Masonry Drill Bit



Tape Measure



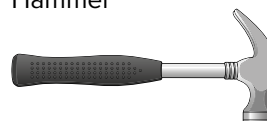
Spanner
(10, 22 and 30mm)



Spirit Level



Hammer



Knife

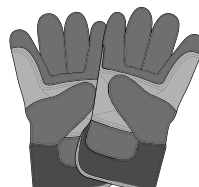


Screwdriver (flat)



Personal Protection Equipment
(minimum requirement)

Gloves



Safety Glasses



4. INSTALLATION

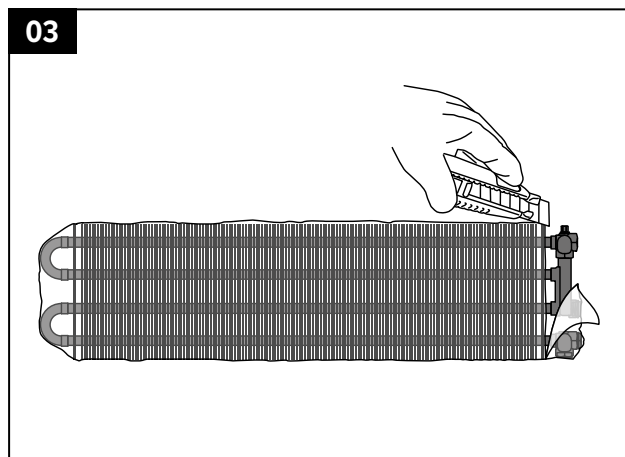
01 Ensure the location facilitates good heat distribution for the room and that the wall and floor is flat and sound.

02

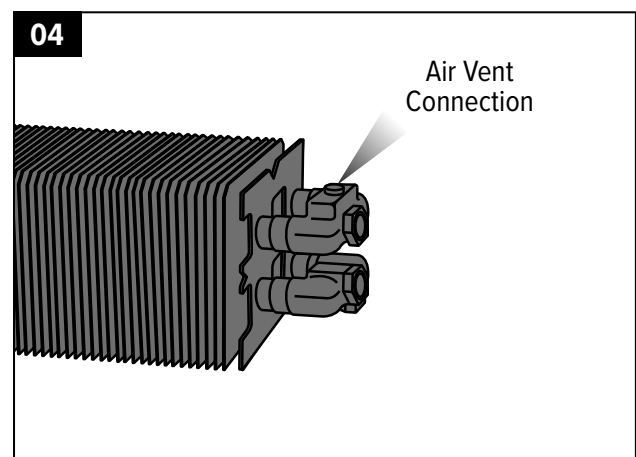
Type	B (mm)	d (mm)	h (mm)
06	85	40	100
10/11	118	53	100
15/16	168	78	120
20/21	218	103	150

NOTE: Flow and return connections can be either left hand or right hand. This can be decided at time of installation. Dimensions shown are for right hand connections. For left hand connections, dimensions are mirrored.

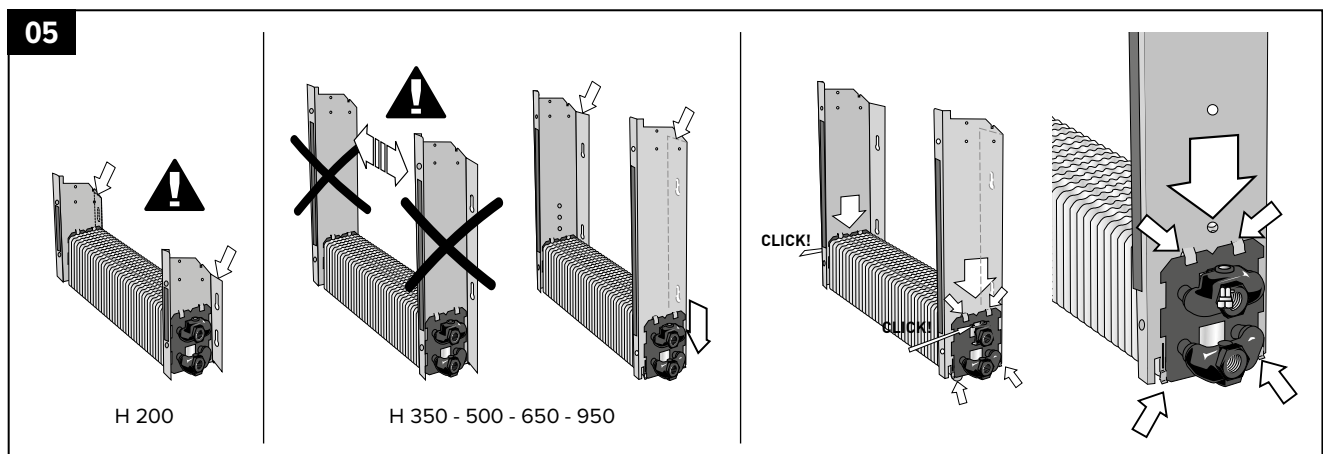
- **Minimum clearance from floor to underside of casing for STRADA equals 'h' dimension.**
- **The supplied fixings are suitable for solid wall construction only. For other wall structures alternative fixings must be used.**
- **If third and fourth brackets are supplied, these are to be fitted to the central plates of the heat exchanger. Fixing centres to be marked at time of installation.**



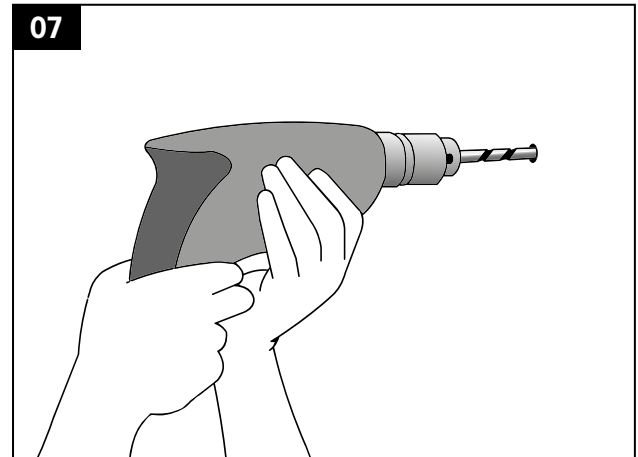
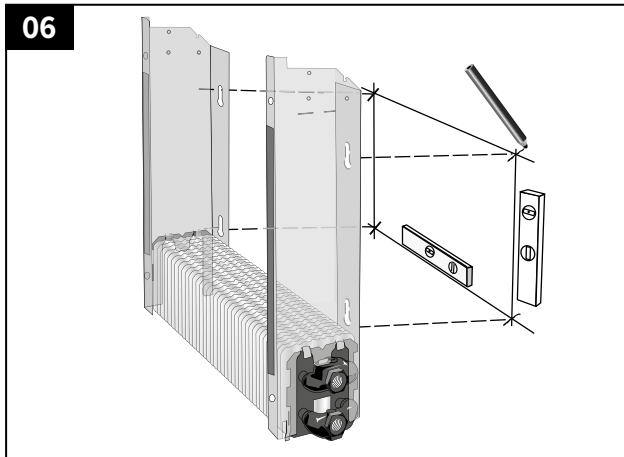
Take the heating element and remove the protective covering from the connection end only. The rest of the covering can be removed later in the process. Leaving it on at this stage protects the element from building and decoration debris.



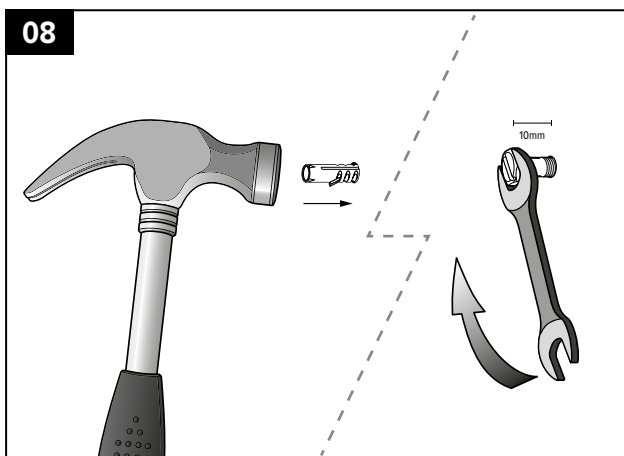
Connection can be either on the left or right hand side, for either option, make sure the 1/8th connection for the air vent is on the top of the heating element.



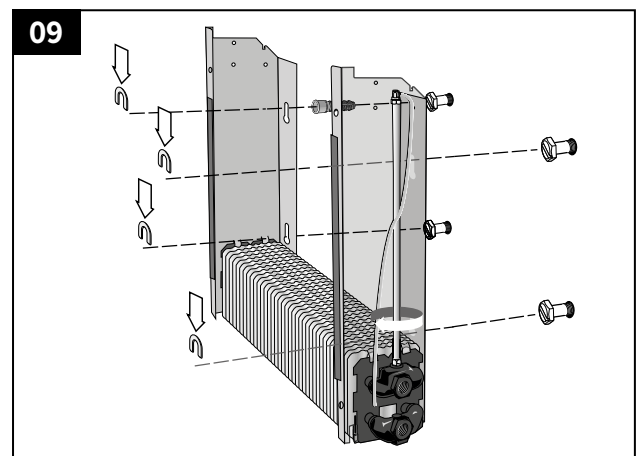
Care to be taken when attaching brackets to ensure they are both the correct way round.



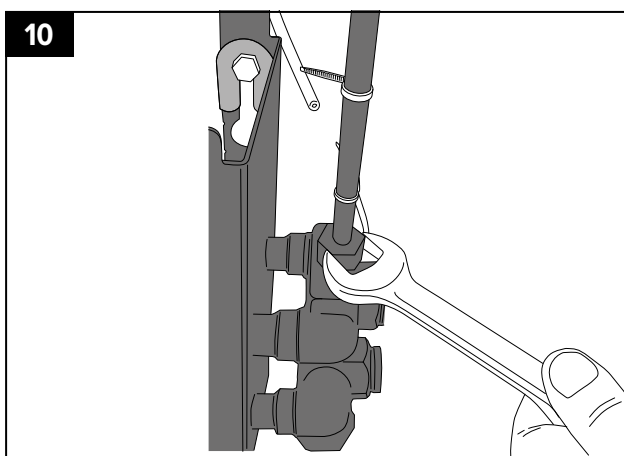
Drill 8mm holes at the marked centres.



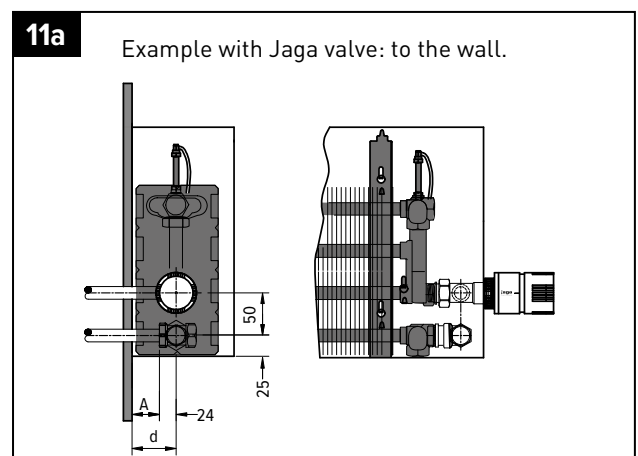
Insert wall plugs into the holes, then insert screws and tighten leaving 10mm protruding.



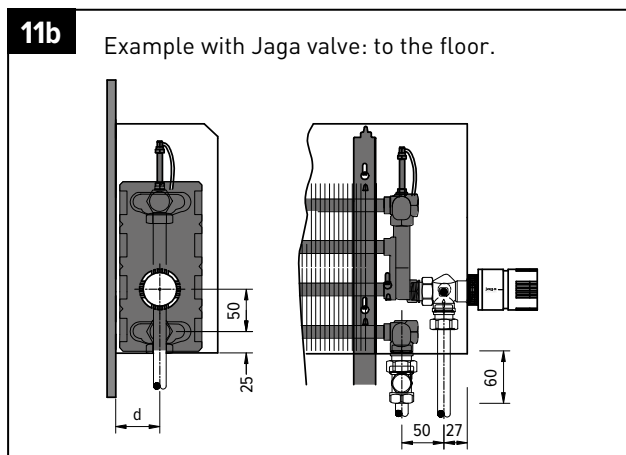
Fix the element assembly to the wall with the fixings provided. Depending on the wall construction, other fixings may be required.



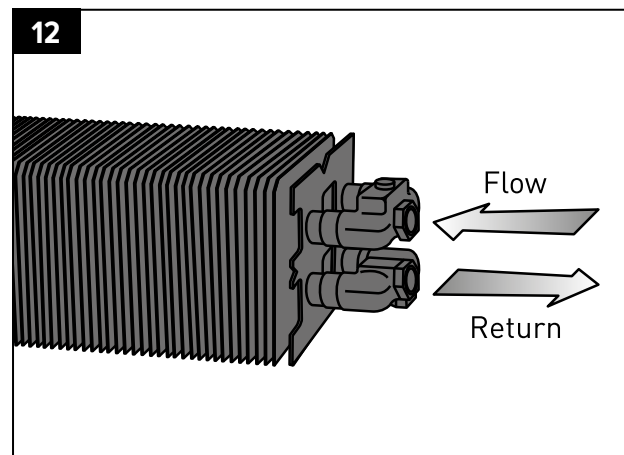
Fit the air vent to the top 1/8th connection and moderately tighten.



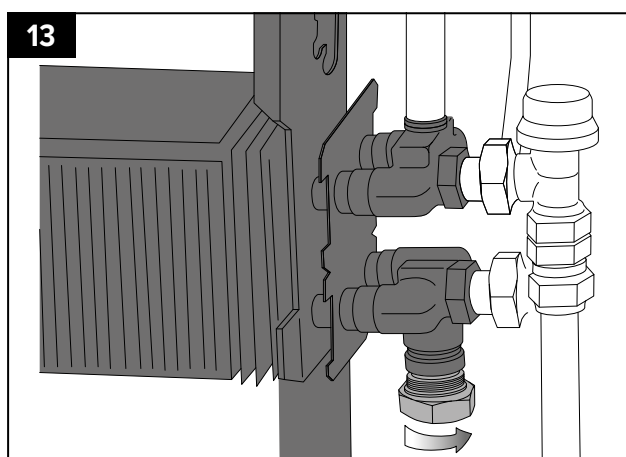
The valves can now be fitted as per the option chosen; as illustrated.



Type	Connection to floor d (mm)	Connection to wall A (mm)
06	40	18
10/11	53	29
15/16	78	53
20/21	103	79



It is important for correct operation that the thermostatic radiator valve is fitted to the flow, into the higher connection of the element. The lockshield valve should be connected to the return, into the lower connection.



The blanking plug can now be fitted to the unused connection.

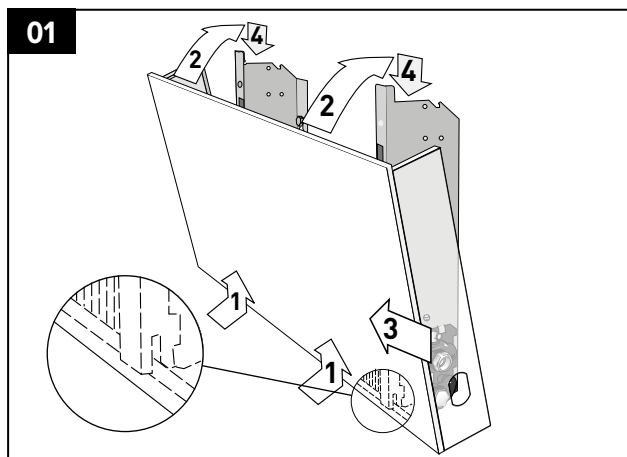
! If incorrectly connected, the heating performance will be reduced and the thermostatic radiator valve may vibrate / chatter.



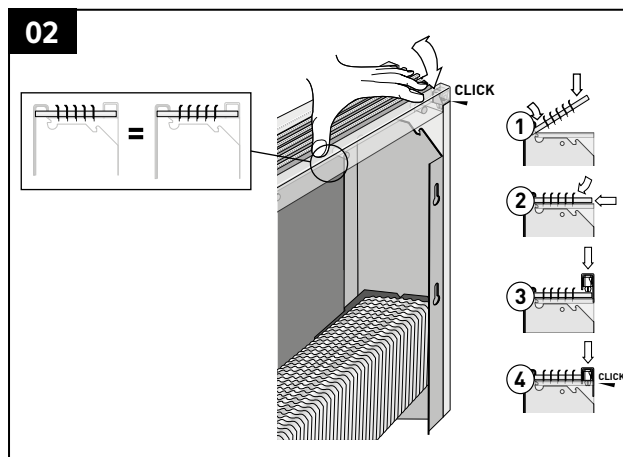
The installation is now complete and can be pressure tested to a maximum 10 bar.

! **Important Note:**
Once the radiator has been fully pressure tested, the system should be cleaned and flushed in accordance with the relevant standard.
The radiator should not be left empty (after the cleaning and flushing) for any prolonged period.

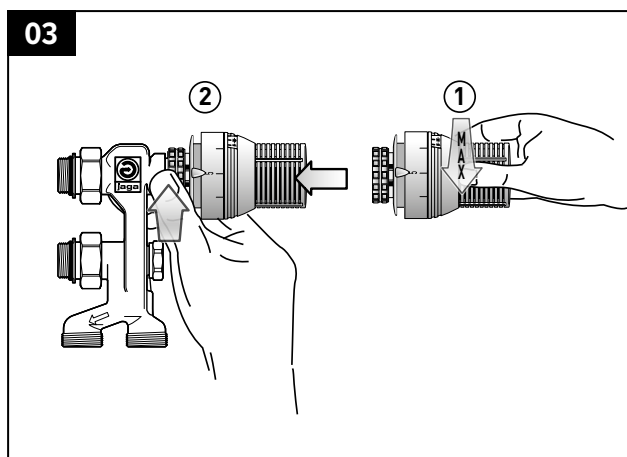
5. FITTING THE CASING



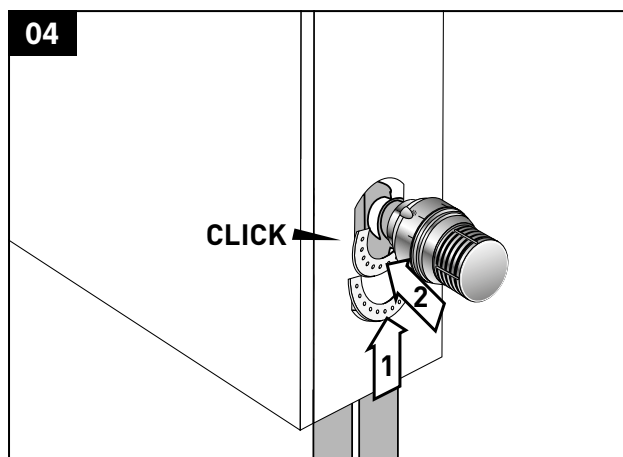
Hook casing onto bottom of bracket. Lift casing up and over towards back. Line up cut out with valve. Push casing down onto brackets to secure.



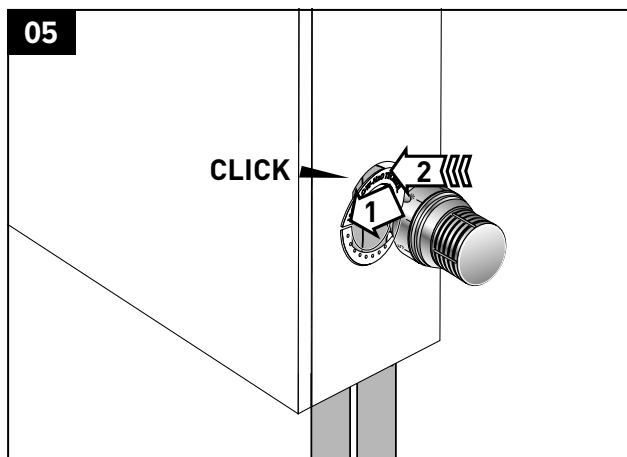
Locate the grille into front panel, lower down into position and fix back bar.



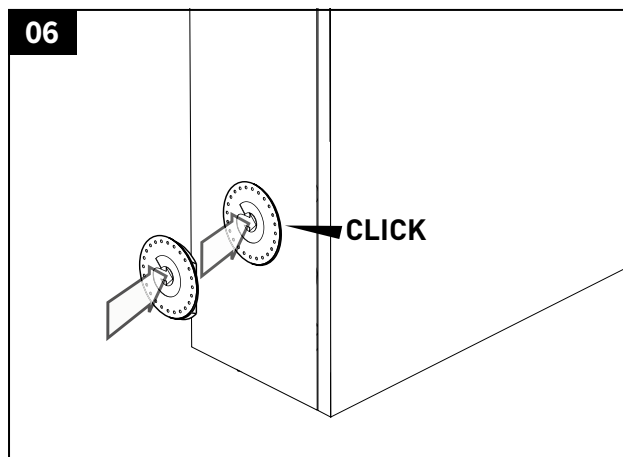
Fit the TRV head, ensuring that it is first turned to its maximum setting. Please follow the TRV head installation instructions for further information.



Insert the first half moon decorative clip.

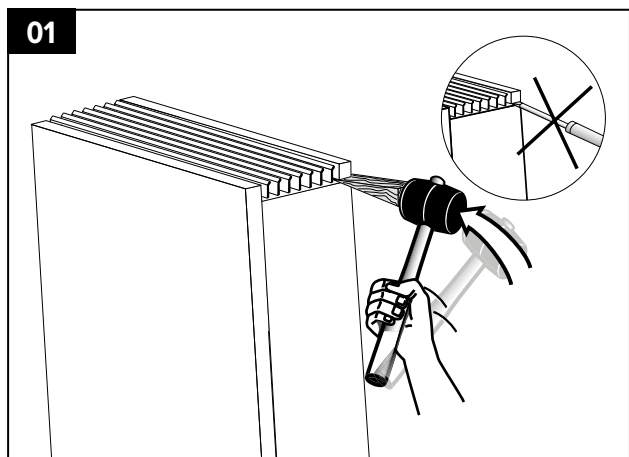


Insert the second half moon decorative clip.

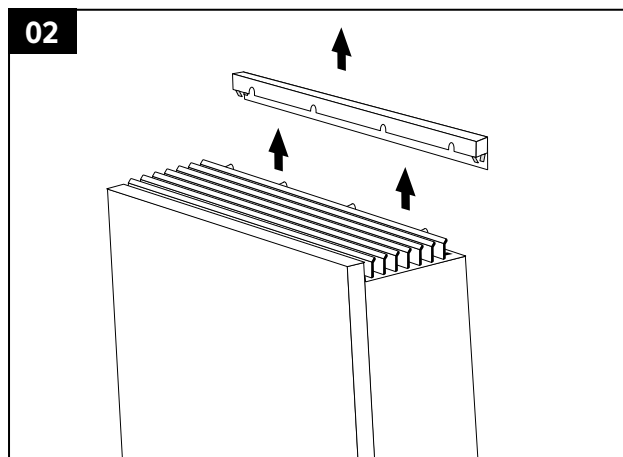


Use blanking plate on opposite side.

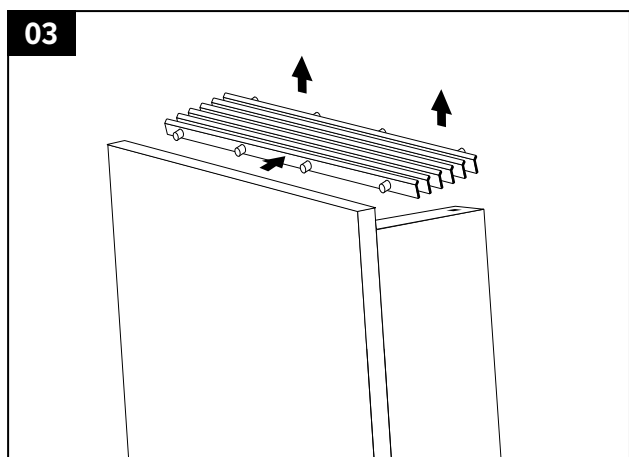
6. REMOVING THE GRILLE



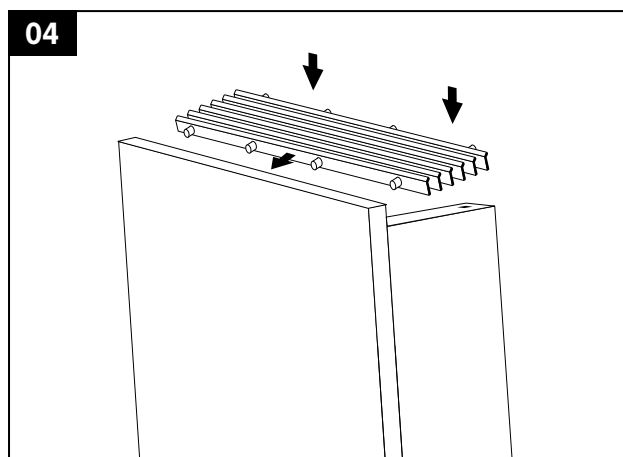
Remove the top grille by gently tapping a wedge in to the back bar with a rubber mallet - do not use a screwdriver!



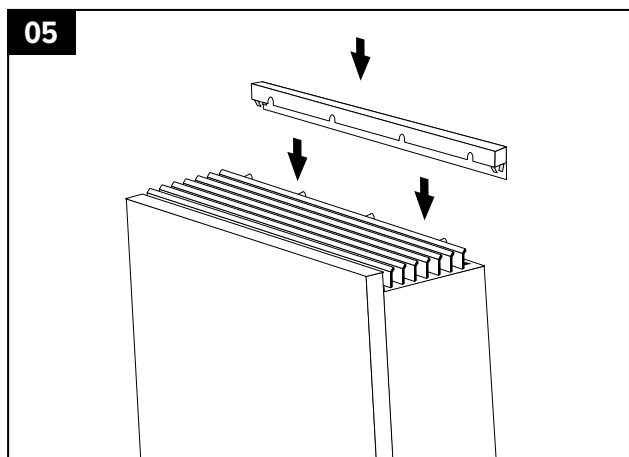
Remove the back bar.



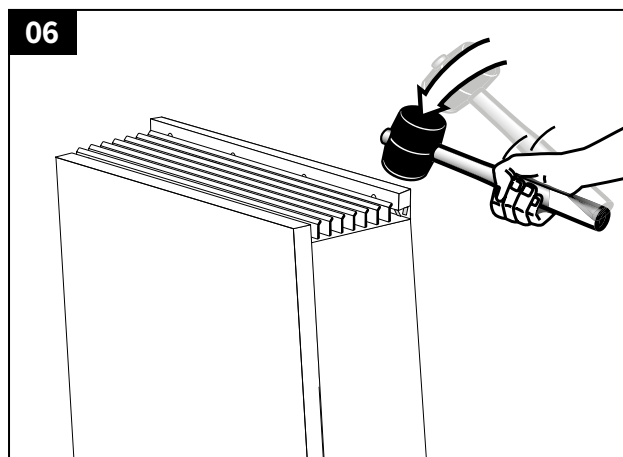
Remove the top grille.



Replace top grille.



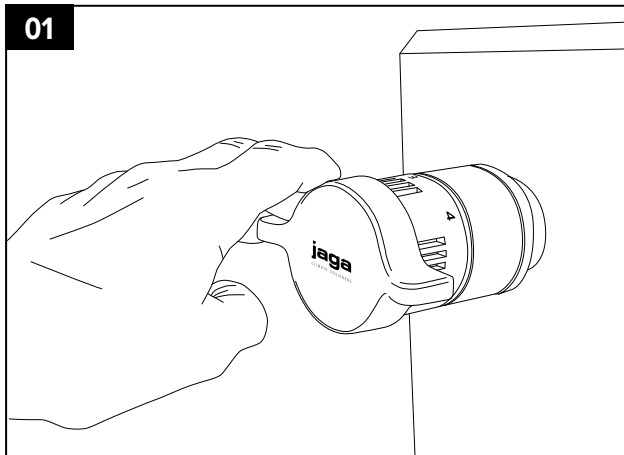
Replace the back bar.



Secure the back bar by gently tapping with a rubber mallet - do not use a hammer!

7. OPTIONAL EXTRAS

Arthritic Aid



Simply push over the end of TRV.

NOTE: Arthritic aid only suitable for use with Jaga White (JW) TRV head.

8. FURTHER GUIDANCE

Water Treatment

It is important that the water in the system is treated to maintain system efficiency and provide longevity for the heating element and associated system components.

Consideration should be given to power flushing (cleaning the system), treatment with inhibitor, system filtration and limescale prevention.

The water should be checked annually.

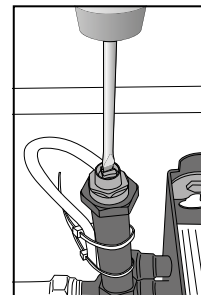
Failure to maintain good water quality will result in the product guarantee being null and void.

Balancing

Please balance the heating system ensuring correct water flow to each radiator and even heat distribution to each room.

Air Vent

Bleed air from radiator using the extended air vent, ensuring that the clear plastic tube is attached to the spigot to allow for easy collection of the water. Bleeding is achieved using a flat blade screw driver.



9. MAINTENANCE

The casing is manufactured from painted 1.25mm steel and may be cleaned with any normal detergent.

The heating element is manufactured from copper tube, brass collectors with aluminium convector fins, all coated in a static resistant coating.

It is recommended that the heat exchanger is checked annually for the accumulation of dust, hair and fibre. Simply remove the thermostatic head and the casing and brush or vacuum the heat exchanger.

Copper and aluminium are both widely recycled materials. At the end of the products life, the various elements can be recycled and disposed of.

10. GUARANTEE

Component	Guarantee
Heating element	30 years
Valves	3 years
Other parts	10 years

11. FAULT FINDING

Symptom	Fault	Solution
Radiator is not working	TRV installation fault	Check that the TRV has been installed correctly. Remove, set to maximum and re-engage
	TRV closed	Open TRV and set to a higher setting
	TRV faulty	Replace TRV
	Lockshield closed	Open lockshield
	No hot water to radiator	Check boiler, pump and controls. Check water flow temperature is at design condition
	System not balanced	Balance heating system ensuring adequate flow to each radiator and even heat distribution to each room
	Air in the heating system	Bleed air from radiator using the extended air vent
	Lack of adequate airflow	Ensure minimum free space at the base and top of the radiator
	Protective covering is still on the element	Remove covering
	Radiator is not big enough for the room	Check design, recalculate and reselect radiator
	Perception	The casing should not get hot, unlike panel radiators
Chattering from TRV	Incorrectly installed	The flow must be connected to the higher connection in the element, the return to the lower connection

12. TERMS & CONDITIONS




1. The guarantee is only valid if the equipment is correctly installed in accordance with the installation instructions and current industry standard practices.
2. The guarantee period starts from the date of the invoice for supply of the goods covered by the guarantee.
3. The guarantee covers components failing due to manufacturing defects only and specifically excludes labour, direct and consequential losses.
4. The Company reserves the right to charge the Buyer for replacement components and associated costs for claims falling outside the guarantee terms.
5. Correct application and maintenance is also essential to validate the guarantee.
6. If the invoice is not available, the date of production will be used based on the product identification number.
7. The Company shall not in any circumstances be liable for any loss (direct or indirect) of profits, business, reputation or goodwill.
8. The Company's total liability to the Buyer in respect of any loss arising under or in connection with the contract shall in no circumstances exceed the price of the goods.


NOTES

1. CHECK OUT INSTALLATION VIDEO ON JAGA'S WEBSITE OR YOUTUBE

2. PLEASE PHONE 01531 631 533 FOR HELP OR ASSISTANCE...



 +44 1531 631 533
 jaga@jaga.co.uk
 www.jaga.co.uk

 **JAGA UK**
Jaga House, Orchard Business Park,
Bromyard Road, Ledbury,
Herefordshire HR8 1LG

STRADAINST1222 - JAGA UK