

jaga

CLIMATE DESIGNERS



PROJECT SOLUTIONS FOR
COOLING, VENTILATING, AND HEATING



jaga

CLIMATE DESIGNERS



*A comfortable indoor
climate all year
round with minimal
impact on the outside
climate. Good for
inside and outside.*



New technologies have to consume far less energy. They have to insure a better indoor climate without damaging the outdoor climate. Traditional systems with fire and carbon emissions have to be extinguished. We have to evolve towards a green flame and build a sustainable path towards a better future. Choosing the sustainable path is no longer a matter of choice, it's an obligation.

Always honouring its values, Jaga Climate Designers continually look for the most ecological solutions for cooling, ventilation and heating.

Join us and become a Jaga Climate Designer ambassador.



jaga

WE DESIGN TO MEASURE

Jaga designs the most energy-efficient and aesthetic solutions for heating, cooling and ventilation. Perfectly integrated solutions according to the wishes of the architect and the client and according to your project's needs and specifications. This way we can ensure that you do not have to limit your creativity due to the HVAC requirements. In the Jaga Experience Lab, a unique EN442 and EN16430 certified climate laboratory, we can simulate and test any customized solution and climate situation at an outside temperature of up to -30°C . By doing so we are certain that our custom work actually works!



Customization possible for every project!





jaga

THE MOST ECOLOGICAL SYSTEMS

Jaga is a pioneer in ecological Low-H₂O coils for low water temperatures and dynamic systems. This both for heating and for passive and active cooling systems. Jaga has already been able to contribute to numerous leading ecological BREEAM, LEED or DGNB certified buildings. Our solutions can also be an important building block in your pursuit of a better environmental score



DGNB
Deutsche Gesellschaft für Nachhaltiges Bauen
German Sustainable Building Council

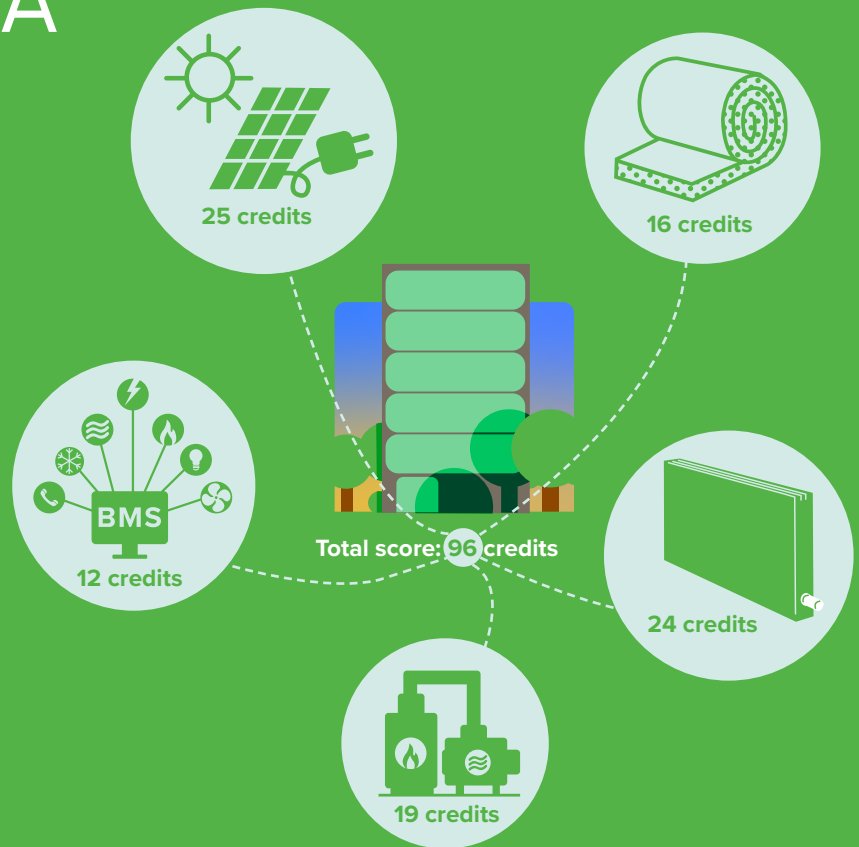
WORLD GREEN BUILDING COUNCIL



BREEAM & JAGA

BREEAM is the world's leading sustainability assessment method for masterplanning projects, infrastructure and buildings. BREEAM is a registered trademark. It recognises and reflects the value in higher performing assets across the built environment lifecycle, from new construction to in-use and refurbishment.

Just as BREEAM pushes the envelope of quantifying sustainability and creating awareness of possibilities for infrastructure and buildings. Jaga strives towards innovation while focussing on the importance of durability. Creating better, more efficient and sustainable systems is the main focus point for Jaga. The analysis shows that their systems align with loads of BREEAM topics from energy consumption, indoor climate, dealing with materials to reduction of waste and pollution.





Different building products can add value to the BREEAM score due to their unique properties. By combining that, your overall score of project will increase.

OVERVIEW BREEAM CREDITS

Jaga can contribute up to **25 credits** for BREEAM International New Construction certificate, which increases the value of the building. Analysed by Encon, an independent assessor organisation.

10 CATEGORIES FOR CREDITS ACCORDING TO BREEAM:

		max. credits	Jaga potential
	MANAGEMENT		
	MAN 04 Commissioning and handover	4	2
	HEALTH & WELLBEING		
	HEA 02 Indoor Air Quality	5	2
	HEA 04 Thermal comfort	3	3
	HEA 05 Acoustic Performance	2	1
	ENERGY		
	ENE 01 Reduction of energy use and carbon	15	3
	ENE 02 Energy monitoring	2	2
	ENE 04 Low carbon design	3	2
	TRANSPORT		
	WATER		
	MATERIALS		
	MAT 01 Life Cycle Impacts	6	1
	MAT 06 Material efficiency	1	1
	WASTE		
	WST 05 Adaptation to climate change	1	1
	WST 06 Functional adaptability	1	1
	LAND USE & ECOLOGY		
	POLLUTION		
	POL 01 Impact of Refrigerants	4	3
	POL 02 NOx Emissions	2	2
	POL 05 Reduction of noise pollution	1	1
	INNOVATION		





jaga

FOR EVERY BUILDING

- offices
- schools
- care centers & hospitals
- residential projects, residential parks, apartment complexes
- commerce & catering industry
- warehouses & corporate buildings
- and more ...

Jaga's project solutions can be found in the tallest and largest buildings in the world, but also in a small school or a residential complex. Jaga is a specialist in compact systems for every building where the climate is one of the top priorities. There are many examples of standard and customized Jaga Climate Designer products in this brochure.

Looking for an inventive and ecological solution for your project?

Challenge us!



PROJECTS

COUR DE JUSTICE DE L'UE	Luxembourg	p. 14
TANZENDE TÜRME	Germany	p. 16
9/11 MEMORIAL MUSEUM	USA	p. 18
WALTROVKA AVIATICA	Czech Republic	p. 20
THE EDGE	The Netherlands	p. 22
COUNCIL HOUSE	Australia	p. 24
FEDERATION TOWER	Russia	p. 26
CENTRO BOTIN	Spain	p. 28
BERCY CRYSTAL	France	p. 30



COUR DE JUSTICE
DE L'UNION
EUROPÉENNE

COUR DE JUSTICE DE L'EU

Project	Cour de Justice de l'EU
Country	Kirchberg, Luxembourg
Architect	Dominique Perrault Architecture
Engineer	Felgen
Main contractor	Climalux
Surface	192 000 m²
Jaga product	Mini Canal Pro
Award	BREEAM excellent



Jaga tailored trench solution

The Jaga Mini Canal with its minimal installation depth is the ideal solution for offices. Hidden beneath a golden grid is a super-fast Low-H₂O heat exchanger that was lacquered completely dark gray and thus rendered “invisible”. The golden grids were specially made to match with the towers’ design.

Why a solution in gold?

While designing the building, the Parisian architect Perrault thought: “If justice had a color, what would it be?” According to Perrault, the answer is gold. “This is not a criminal court. It is not a place that deals with prisons and punishments. It has to do with relations between European countries, with constitutional affairs.”.

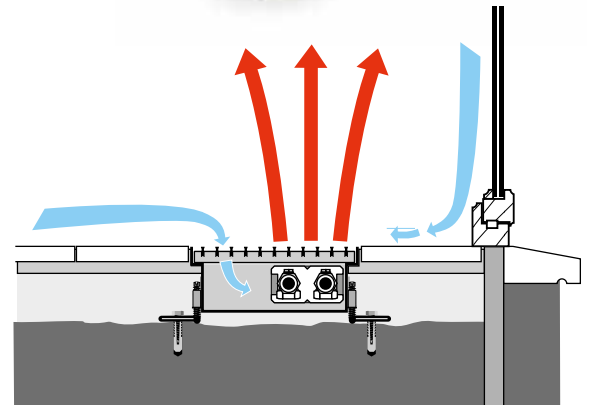
“Moreover, Luxembourg often has a sad sky, this way, we can capture the sun.”



JAGA PRODUCT



Mini Canal Pro



Acoustic partition



TANZENDE TÜRME

Project	Tanzende Türme
Country	Hamburg, Germany
Architect	BRT Architekten
Engineer	Pinck Hamburg, Germany
Main contractor	Züblin AG
Surface	64 000 m²
Jaga products	Mini Canal - Mini Freestanding
Award	LEED Gold certified



The Tanzende Türme (or “dancing towers”) building in Hamburg is a multiuse space, including offices, restaurants, and a nightclub. Known as the dancing towers, the construction is unique in its striking bent facade of steel and glass. It features external LED strip lights and is equipped with a hurricane-proof deflection pane. The building won the MIPIM Award in 2014 for the Best Office and Business Development and came third in the BDA Architecture Prize in 2012. It’s a LEED GOLD certified building, installed with 1 591 pieces of Jaga Mini Freestanding and 61 pieces of Jaga Mini Canal.

The radiators use Low-H₂O technology, and ensure no heat is lost through the glazed facade. They offer maximum heat emission with the lowest energy consumption, and are powered with an ultra-fast and super conductive heat exchanger. The Mini Canal is an under floor unit that reacts quickly to fluctuations in temperature and is tailored to match the interior design.



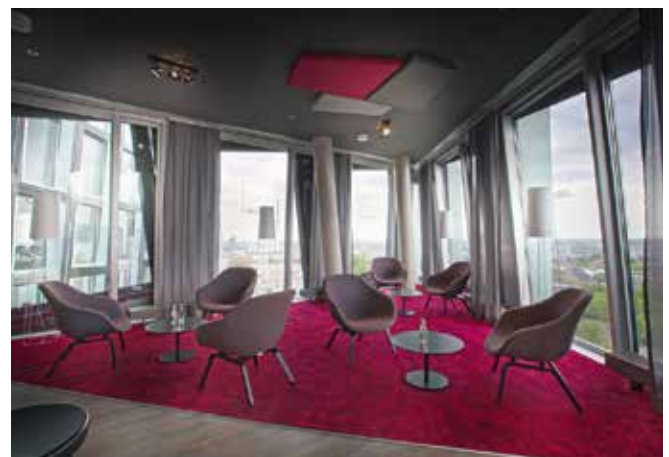
JAGA PRODUCTS



Mini Canal



Mini Freestanding





9/11 MEMORIAL MUSEUM

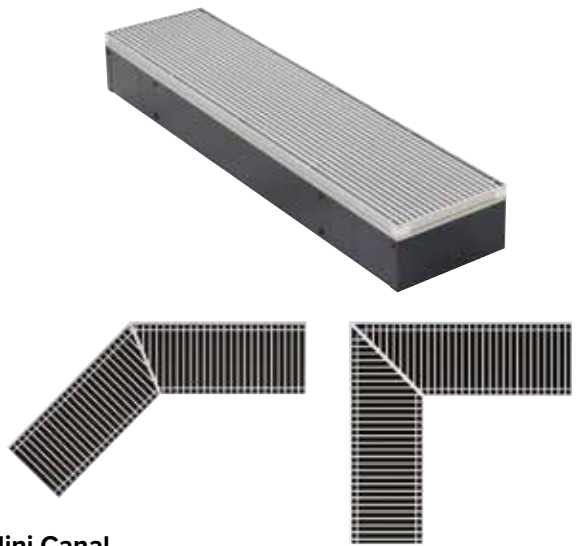
Project	9/11 Memorial Museum
Country	New York City, USA
Architect	Snøhetta
Engineer	Buro Happold
Main contractor	PJ Mechanical
Surface	4 400 m²
Jaga product	36 Mini Canal special
Award	LEED Gold certified



The National September 11 Memorial Museum in New York was completed in 2014 and was designed to resonate with its surrounding context. With floor to ceiling glass windows providing light and views across the site, it was necessary to devise a customised solution that allowed for heating within the concrete floor. This was one of the reasons to choose for the Jaga Mini Canal trench heater. The Mini Canal reacts quickly to any fluctuations in temperature, and the Low-H₂O technology cuts carbon emissions by 10%. A super conductive and efficient heating system, with a low water content and ultra-fast heat exchanger, ensuring maximum heat and low energy consumption. Its minimal recess depth of 9 cm makes it ideal for buildings with large windows to eliminate any potential drafts, without blocking views. Designed by Snøhetta, the pavilion has a LEED Gold certification and hereby follows the Memorial's sustainability guidelines. The building is optimised to perform with minimal energy and the installation of Jaga's underfloor heating system helps to achieve this, while reducing operating costs.



JAGA PRODUCT



Mini Canal





WALTROVKA

Project **Waltrovka**
Country **Prague, Czech Republic**
Architect **K4 a.s.**
Jakub Cigler Architekti
Atelier Krátký
Engineer **Vladimír ŠPAČEK**
Main contractor **Subterra a.s., Ekoklima a.s.**
Surface **76 500 m²**
Jaga product **Mini Canal**
Award **LEED Gold certified**



The goal of the Waltrovka project in Prague was to reinvigorate the Jinonice district. The former location of the well-known production facility, Walter Motors, is now home to a “mixed-use” complex. The domain is situated near a lovely 2 hectare park and includes office and residential units, as well as a recreational area.

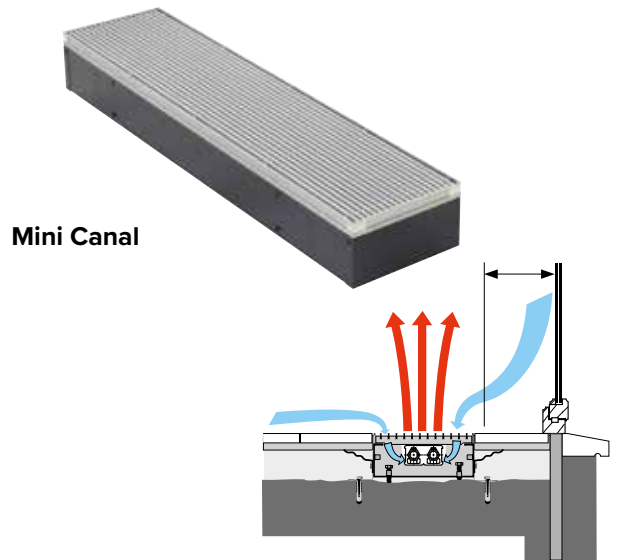
The Waltrovka project itself is 76 500 m² in total and consists of 3 different buildings: Mechanica (33 500 m²), Dynamica (16 000 m²) and Aviatika (27 000 m²).

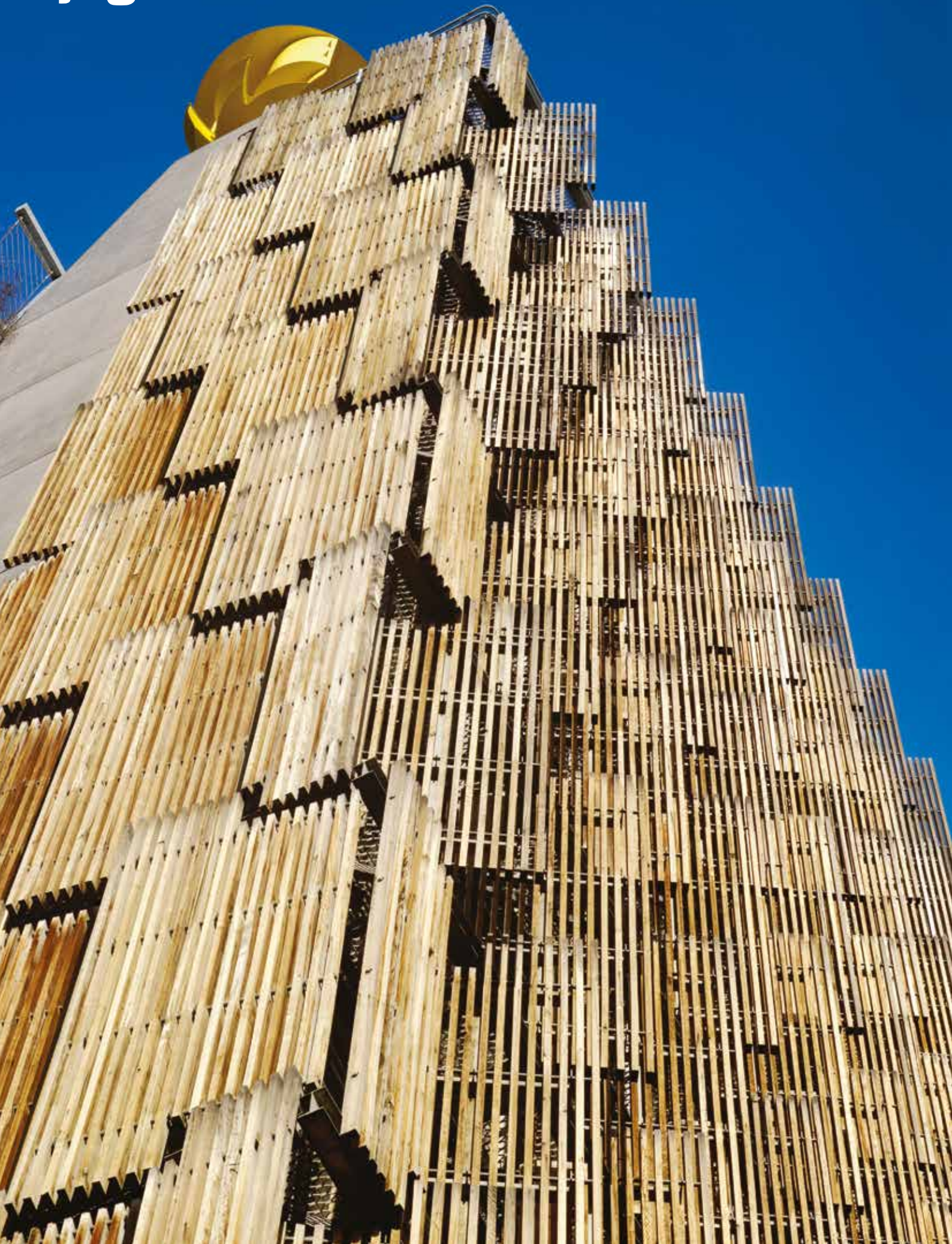
Jaga was chosen as a partner in this project because of our high quality units and finish. Our Mini Canal, a compact floor solution with an installation height of just 9 centimeters, was the top choice for these projects. The Mini Canal’s walkable grille was chosen because it could be adjusted to the interior.

In this way Jaga was not only able to meet the strict requirements and expectations of the various parties in this project, but the project also received the coveted LEED Platinum & LEED Gold certifications.



JAGA PRODUCT





COUNCIL HOUSE CH2

Project	Council House CH2
Country	Melbourne, Australia
Architect	PLP Architecture Design Inc.
Engineer	Bonacci Group
Main contractor	Hansen Yuncken
Surface	12 536 m²
Jaga product	Mini Canal
Award	6 star Green Star - Office Design



WORLD GREEN
BUILDING COUNCIL

The first commercial project awarded a 6-star Green Star rating by the Green Building Council of Australia

An administrative building for the City of Melbourne. CH2 has been designed to reflect the planet's ecology. The first focus of the design process for CH2 was to gain an understanding of Melbourne's climate and weather patterns. Therefore the building operates like an ecosystem by responding to its environment. Melbourne is well known for its 'four seasons in one day'. In the case of CH2, this variability was viewed as an opportunity to design the building around the concept of cold energy storage. The building therefore operates in two seasonal modes (winter and summer), as well as day mode and night mode. CH2's many parts work together to heat, cool, power and water the building, creating a harmonious environment. CH2 has been designed to not only conserve energy and water, but the quality of the internal environment of the building has also been designed to improve the wellbeing of its occupants. CH2 demonstrates a new approach to workplace design, creating a model for others to learn from and follow.



JAGA PRODUCT



Mini Canal





FEDERATION TOWER

Project	Federation Tower
Country	Moskou, Russia
Architect	Schweger Architekten, Speech, Tchoban Voss Architekten
Engineer	Thornton Tomasetti
Main contractor	Renaissance Construction
Surface	442 915 m²
Jaga product	Mini Canal

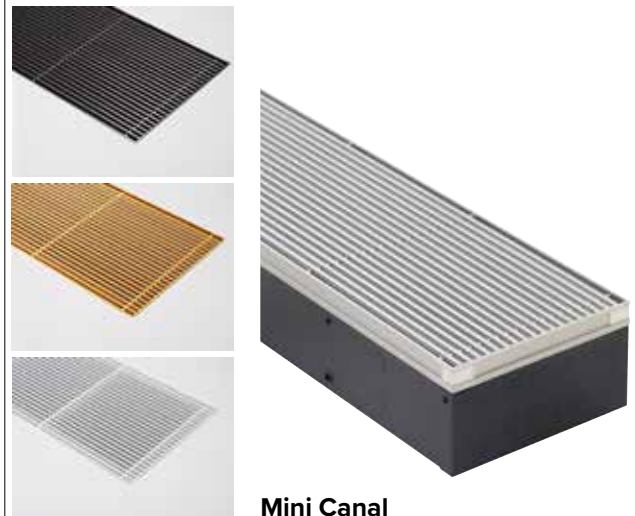
Federation Tower is a skyscraper in the Russian capital Moscow consisting of two towers. The first tower, Vostok (east), has a height of 374 meters (95 floors). The second tower, Zapad (west), has a height of 242 meters (63 floors). A large part was reserved for the Grand Hyatt Moscow, but the top floors became restaurants, a viewing platform and a fitness club with swimming pool.

The building was the tallest building in Europe for a short time, but was later surpassed by another Jaga project: Lakhta Center in St. Petersburg, Russia.

The Jaga Mini Canal with its minimum installation depth of 9 cm is ideal for buildings with large windows to prevent any drafts without obstructing the view. A super conductive and efficient heating system with a low water content and ultra fast heat exchanger, which guarantees maximum heat and low energy consumption.



JAGA PRODUCT



Mini Canal





CENTRO BOTIN

Project	Centro Botín
Country	Santander, Spain
Architect	Renzo Piano & Luis Vidal + architects
Engineer	Dynamis
Main contractor	OHL/Ascán
Surface	8 739 m²
Jaga product	Clima Canal

The Centro Botín project, with a surface area of 8 739 m² is an art center in Santander, Spain. Thanks to the wide and varied range of artistic experiences that are offered to the general public, Centro Botín is a meeting place for people who want to be inspired.

This new building, where art is used to improve the lives of people and society in general, was designed by architects Renzo Piano and Luis Vidal + arquitectos. Furthermore, this building consists of 2 blocks, with the western block dedicated to art and the eastern block to cultural and educational activities.

Jaga was chosen as a partner for this project because of our high-quality devices, but also because of our flexibility in general, both in the design phase and on site. We didn't opt for ceiling solutions. We chose devices that would go well with the interior of the Centro Botín project. That is why it was decided to install 177 of our Jaga Clima Canal floor installation solutions with personalized grilles that match the floors and the interior of the Centro Botín project perfectly.

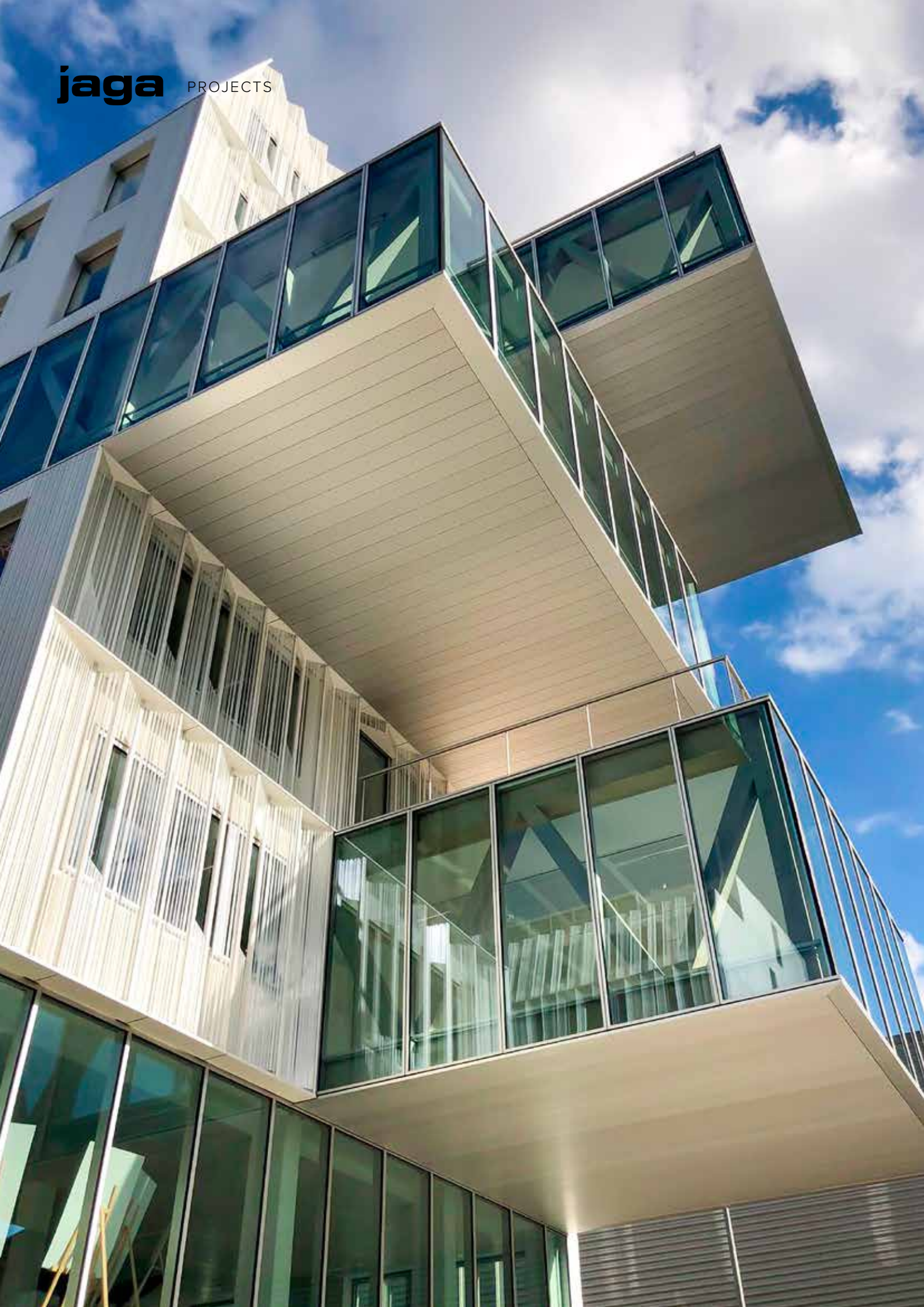


JAGA PRODUCT



Clima Canal





BERCY CRYSTAL

Project	Bercy Crystal
Country	Paris, France
Architect	Brenac & Gonzalez
Engineer	Ogic
Main contractor	Bouygues Energies Services
Surface	14 550 m²
Jaga product	Clima Canal
Award	HQE Excellent BREEAM Very Good



Strong architecture with a great deal of modularity

The Bercy-Crystal tower has already established itself as the future icon of the Bercy district in Paris thanks to its innovative architecture with both broken and flowing lines, and its glass windows. The luxurious building has more than 14 550 m² of offices that can be configured in all possible ways and the elegant workspaces, made of noble materials and with lots of natural light, are being used by almost 1 000 employees. The project was delivered in September of 2017.

Special Clima Canal underfloor solutions were installed on the top floor in order to provide discrete heating, cooling and ventilation. Moreover,

the project received the double certification : HQE Excellent and BREEAM Very Good, with Compliance at RT2012 -30%!



JAGA PRODUCT



Clima Canal 4-pipe





Poste du Louvre - France - Clima Canal



Roots - Belgium - Installation in a wall recess



Willis Tower - USA - Clima Canal



The Grand Mark Hotel - Czech Republic - Strada



Höfdatorg - Iceland - Clima Canal



BMW Langley - Canada - Mini Canal



Nike Distributiecentrum - Belgium - AVS Unit heater

HEALTHCARE



Blood Center - Poland - Strada



WZC Vinkenbosch - Belgium - Strada & Oxygen



AZ Groeninge - Belgium - Installation in a wall recess



UZ Leuven - Belgium - Strada



WZC Clarenhof - Belgium - Mini Canal



Royal Hospital - United Kingdom - Tempo DBE



Kinderpsychiatrisch Centrum - Belgium - Mini Canal DBE



De Rotterdam - The Netherlands - Mini Canal



KPMG Headquarters Luxembourg - Mini Canal



Flame Towers - Azerbaijan - Mini Canal



Rivergate - Austria - Linea Plus Vrijstaand



Axel Springer - Germany - Mini Canal Pro



Thyssen Krupp - Germany - Mini Canal



The Bridge - The Netherlands - Mini Canal

OFFICES



Tour Eqho - France - Clima Canal



Bonner Bogen - Germany - Clima Canal 4-pipe



Sky Tower - Romania - Mini Canal Special & Tempo



AGC Glass Europe - Belgium - Clima Canal



Facebook Park Tower - USA - Briza



Statoil HQ - Norway - Mini Canal



Kungsbrohuset - Sweden - Mini Freestanding & Strada



NAC Hasselt - Belgium - Briza Special



Opera House - Norway - Mini Canal



Atomium - Belgium - Iguana



Gerechtsgebouw De Hazelaar - Belgium - Tempo Sur pieds



Université de Jussieu - France - Clima Canal



Provinciehuis Antwerpen - Belgium - Mini Canal



University of Washington - USA - Installation in a wall recess

RESIDENTIAL



Zilart - Russia - Mini Canal



Les jardins de la Source - Belgium - Strada



The 7 - Germany - Clima Canal



Private residence - Italy - Briza



Skypark - Slovakia - Mini Canal



V-Tower - Czech Republic - Mini Freestanding & Strada



Madison Apartments - Poland - Clima Canal

jaga PROJECT SOLUTIONS

More products or info
see www.jaga.com

EXAMPLES OF PROJECT SOLUTIONS

CLIMA CANAL

In the floor p. 40

In socket p. 48

In slim designer casing p. 50

MINI CANAL

Mini Canal Pro p. 52

FREEDOM

Freedom Clima Freestanding p. 56

CLIMA BEAM

Built-in ceiling p. 59

Ceiling recessed with grille p. 59

Ceiling-mounted with casing p. 59

BRIZA

Fan convector T 12 p. 64

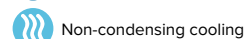
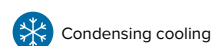
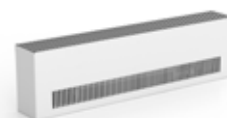
Fan convector T 22 p. 66

OKNO

For panoramic windows p. 70

AVS UNIT HEATER

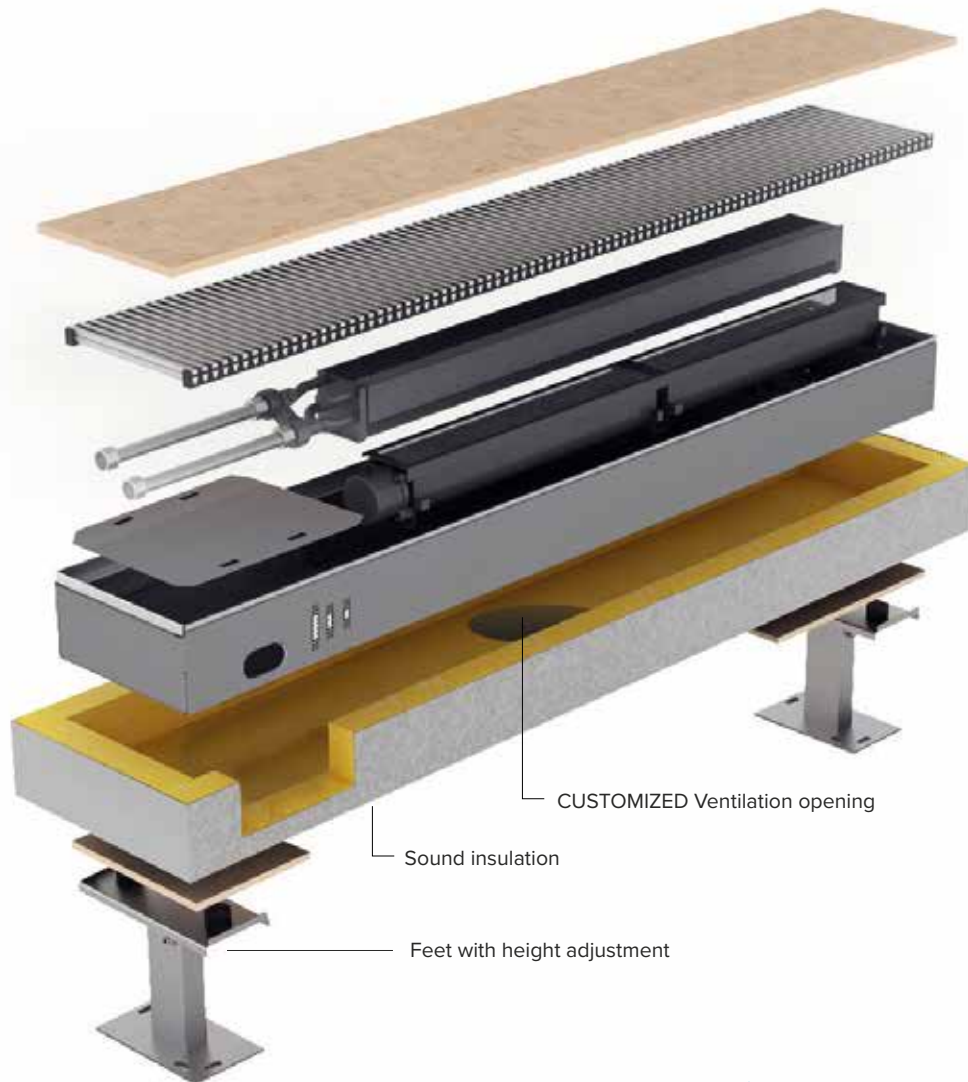
Unit heater for large spaces p. 72





CLIMA CANAL TRENCH HEATING

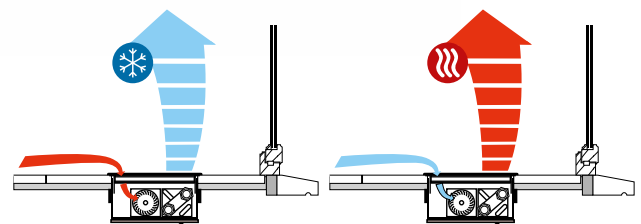
COMPLETE CLIMATE CONTROL IN THE FLOOR



jaga
QUALITY
MADE IN BELGIUM

EXTREMELY COMPACT AND SILENT

This high-tech Low-H₂O heat exchanger with its thermal activator has been specially developed to deliver record output within super-compact dimensions. All this at a very low noise level!

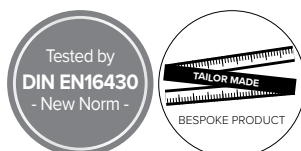


HEATING, COOLING AND VENTILATION

Despite its modest size, Clima Canal is a powerful heating, cooling and ventilation unit all in one. Silent and unobtrusive, Clima Canal provides the greatest possible climatic comfort.

WITH ENERGY-EFFICIENT EC- MOTORS

By making use of the latest EC-motors, the Clima Canal units use 50 % less electrical energy. Moreover, these EC-motors can be controlled through the latest home automation systems via their 0-10 VDC speed control.



Customization possible for every project!



STANDARD RANGE

Customization possible for every project!



Height 19
2- and 4-pipe

Height 13
2- and 4-pipe

Height 10
2-pipe

Height 08
2-pipe

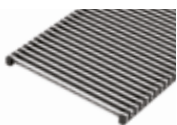
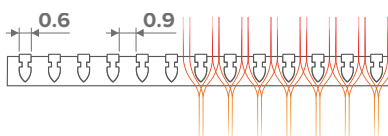


STANDARD GRIDS

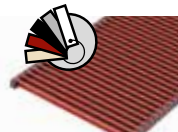
Material, color, spacing and free air flow of your choice



Aluminium grilles



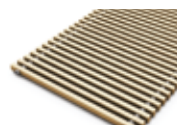
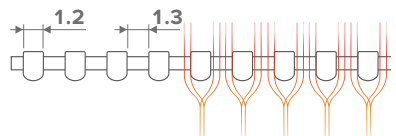
Alu. natural



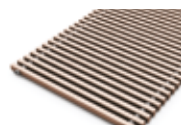
Alu. lacquered



Wooden grilles

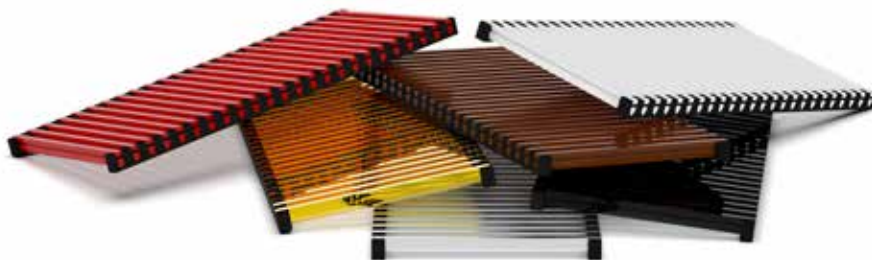


Oak natural
Oak varnished



Beech natural
Beech varnished

Choose from one of the largest collections: grilles in different models, materials and colours.



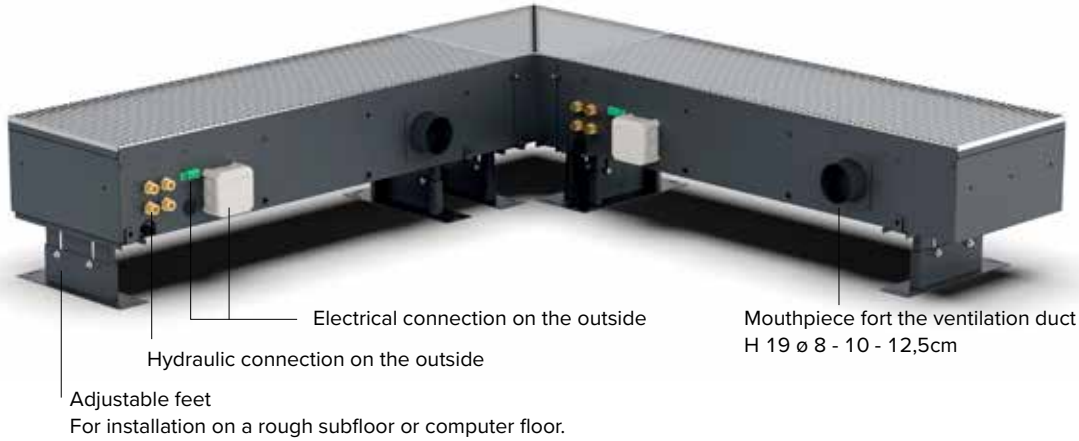
All inner and outer corners can be made to measure



CLIMA CANAL TRENCH-HEATING

PLUG & PLAY

Easy connections outside the floor channel. Ideal for raised floors.



VENTILATION

Examples

Mouthpiece for the ventilation duct



H 13



H 08 - 010



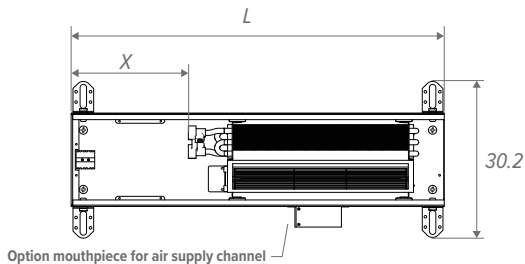
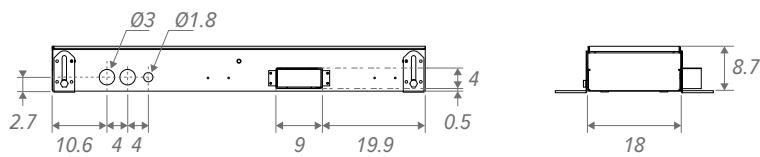
Clima Canal: Installation



Clima Canal: Finished

CLIMA CANAL 08

STANDARD DIMENSIONS (in cm)



L	L	X
Standard	Through-mounting	
72.3	72.1	23.0
108.3	108.1	23.0
144.3	144.1	18.5
180.3	180.1	15.0

Building in-opening: +0.5 cm

COMPOSITION

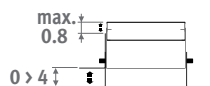
Cover plate

Grille

Several styles and colours in anodized aluminium and a range of wood finishes

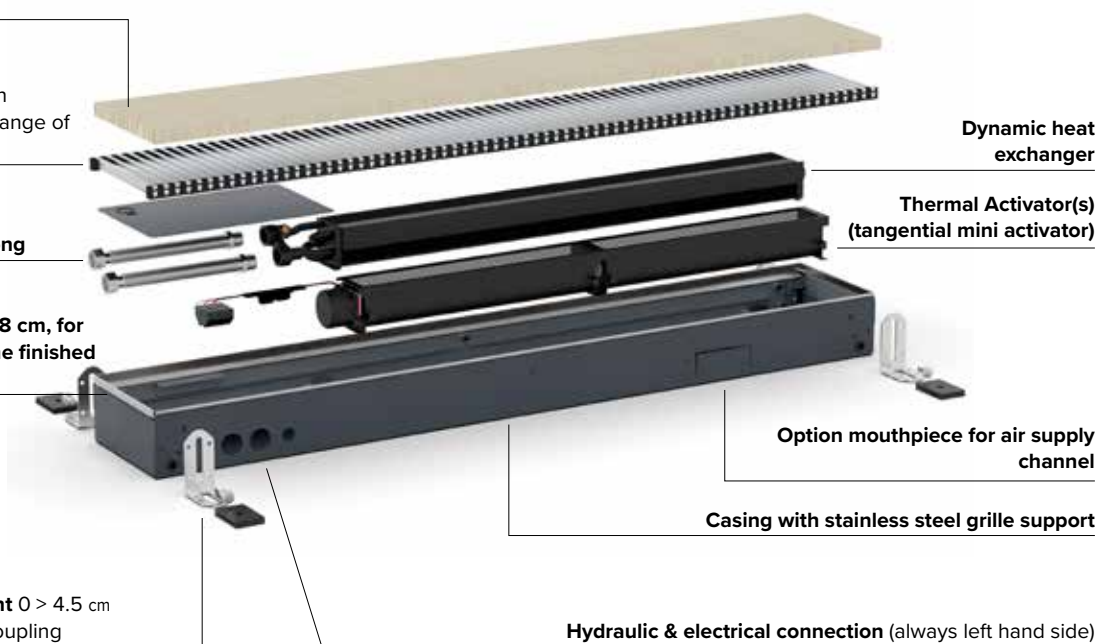
Stainless steel flexible connections 1/2", 15 cm long

Fine adjustment to max. 0.8 cm, for a perfect alignment with the finished floor



Fine adjustment 8.5 > 9.3 cm

Feet with height adjustment 0 > 4.5 cm
Provided with acoustic decoupling



Dynamic heat exchanger

Thermal Activator(s)
(tangential mini activator)

Option mouthpiece for air supply channel

Casing with stainless steel grille support

Hydraulic & electrical connection (always left hand side)

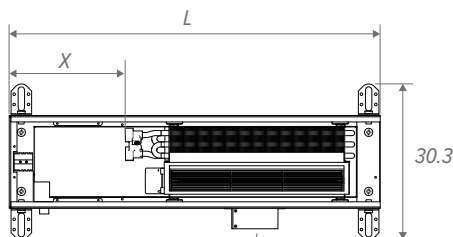
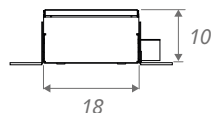
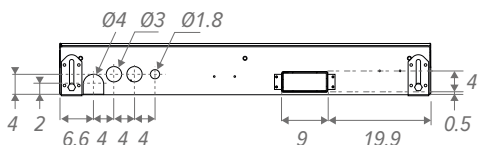
CLIMA CANAL TRENCH-HEATING



CLIMA CANAL 10

STANDARD DIMENSIONS (in cm)

Customization possible for every project!



Option mouthpiece for air supply channel

L	L	X
Standard	Through-mounting	
72.3	72.1	23.0
108.3	108.1	23.0
144.3	144.1	18.5
180.3	180.1	15.0

Building in-opening: +0.5 cm

COMPOSITION

Cover plate

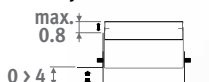
Grille

Several styles and colours in anodized aluminium and a range of wood finishes

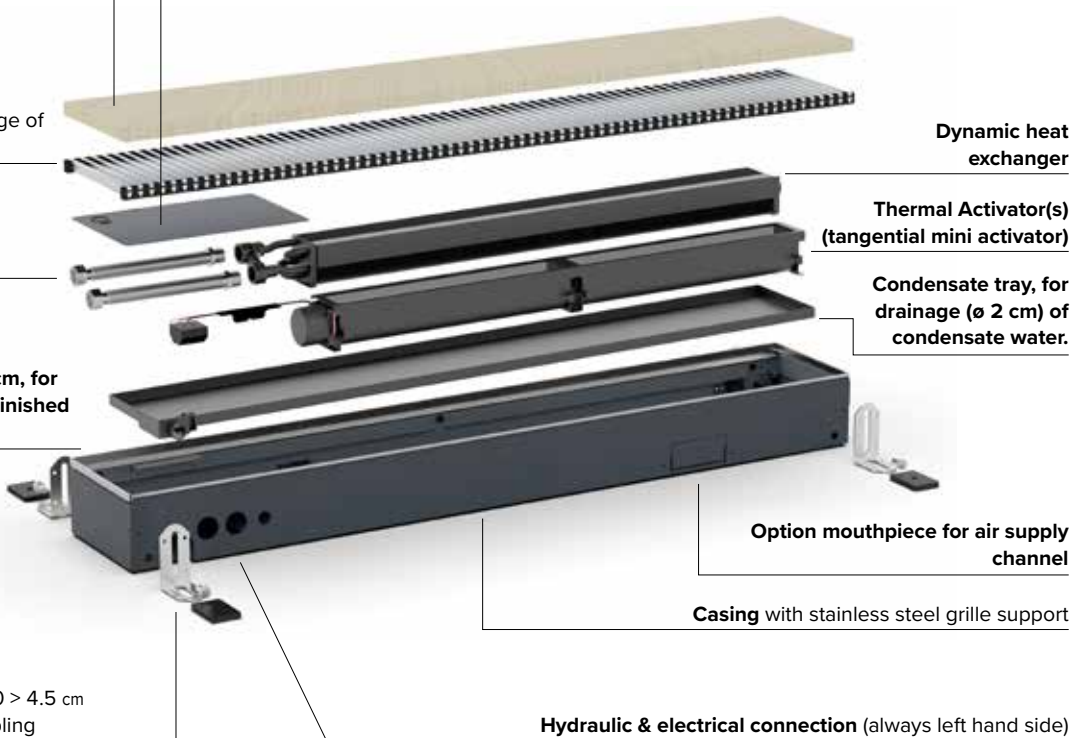
Stainless steel flexible connections 1/2", 15 cm long

Fine adjustment to max. 0.8 cm, for a perfect alignment with the finished floor

Fine adjustment 10 > 10.8 cm

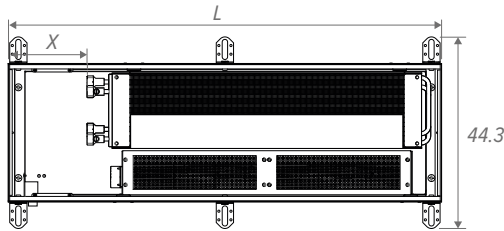
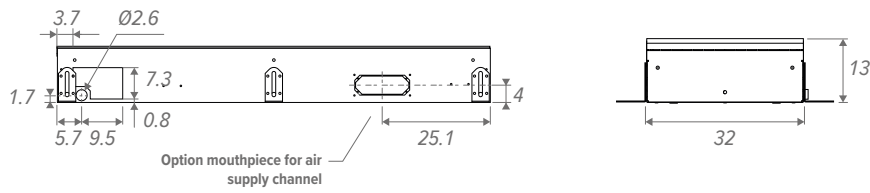


Feet with height adjustment 0 > 4.5 cm
Provided with acoustic decoupling



CLIMA CANAL 13

STANDARD DIMENSIONS (in cm)



Building in-opening: +0.5 cm

L	L	X
Standard	Through-mounting	
70.3	70.3	18.3
100.3	100.3	18.3
120.3	120.3	18.3
140.3	140.3	18.3
170.3	170.3	18.3
200.3	200.3	18.3
230.3	230.3	18.3
280.3	280.3	18.3

COMPOSITION

Cover plate

Grille

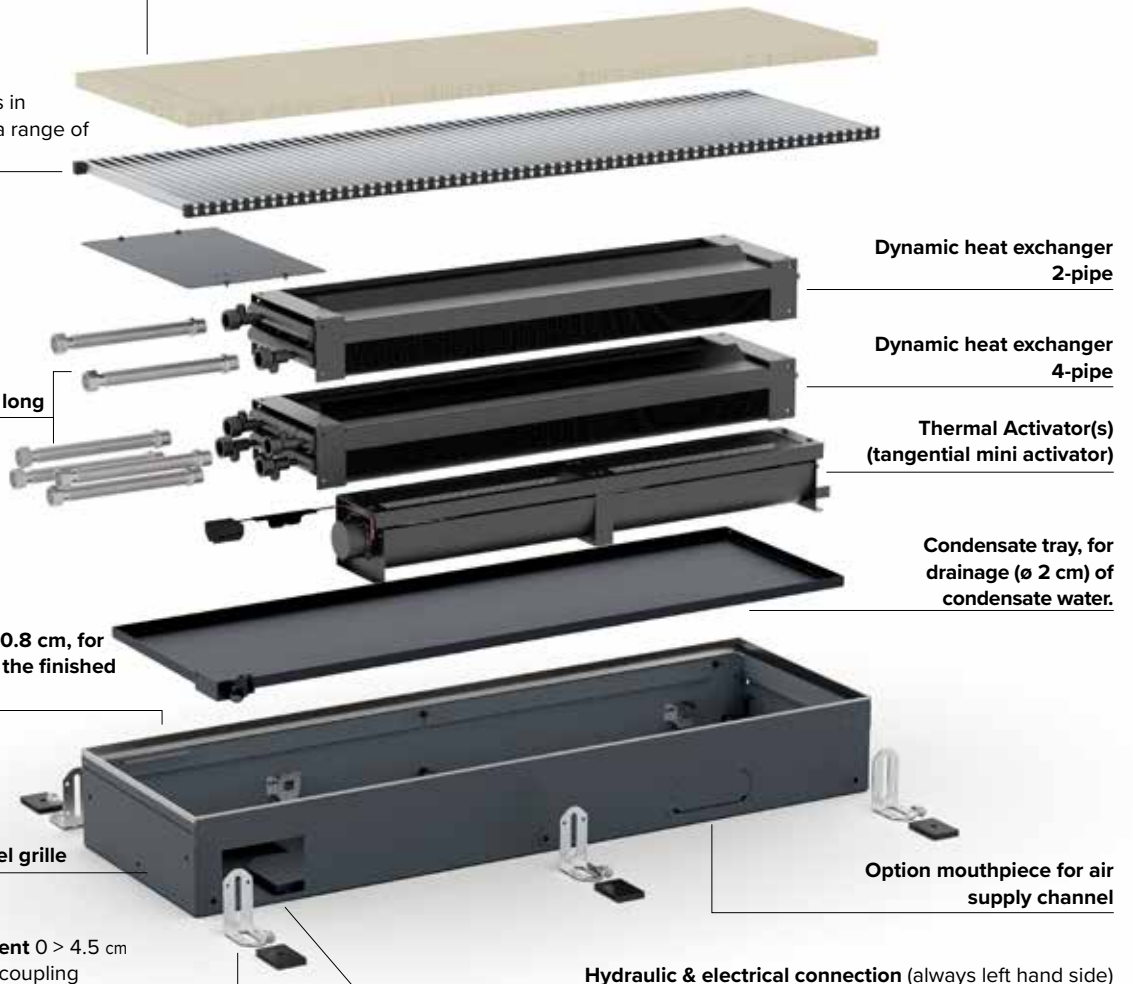
Several styles and colours in anodized aluminium and a range of wood finishes

Stainless steel flexible connections 1/2", 15 cm long

Fine adjustment to max. 0.8 cm, for a perfect alignment with the finished floor

Casing with stainless steel grille support

Feet with height adjustment 0 > 4.5 cm
Provided with acoustic decoupling



Hydraulic & electrical connection (always left hand side)

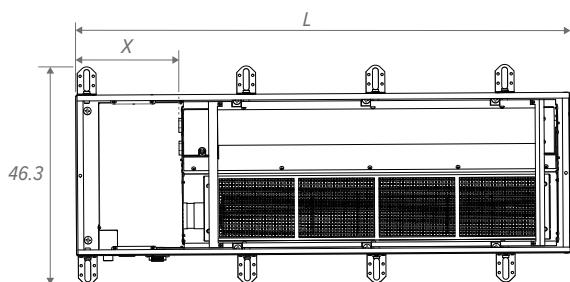
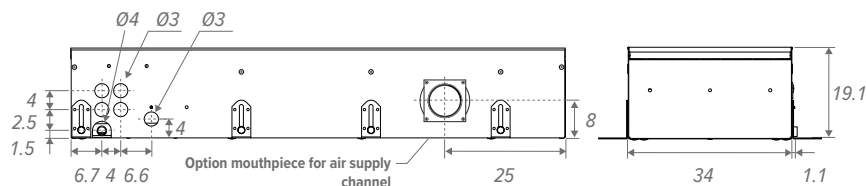
CLIMA CANAL TRENCH-HEATING



CLIMA CANAL 19

STANDARD DIMENSIONS (in cm)

Customization possible for every project!



L	L	X
Standard	Through-mounting	
105.0	105.0	21.8
120.0	120.0	21.8
200.0	200.0	21.8
280.0	280.0	21.8

Building in-opening: +0.5 cm

COMPOSITION

Cover plate

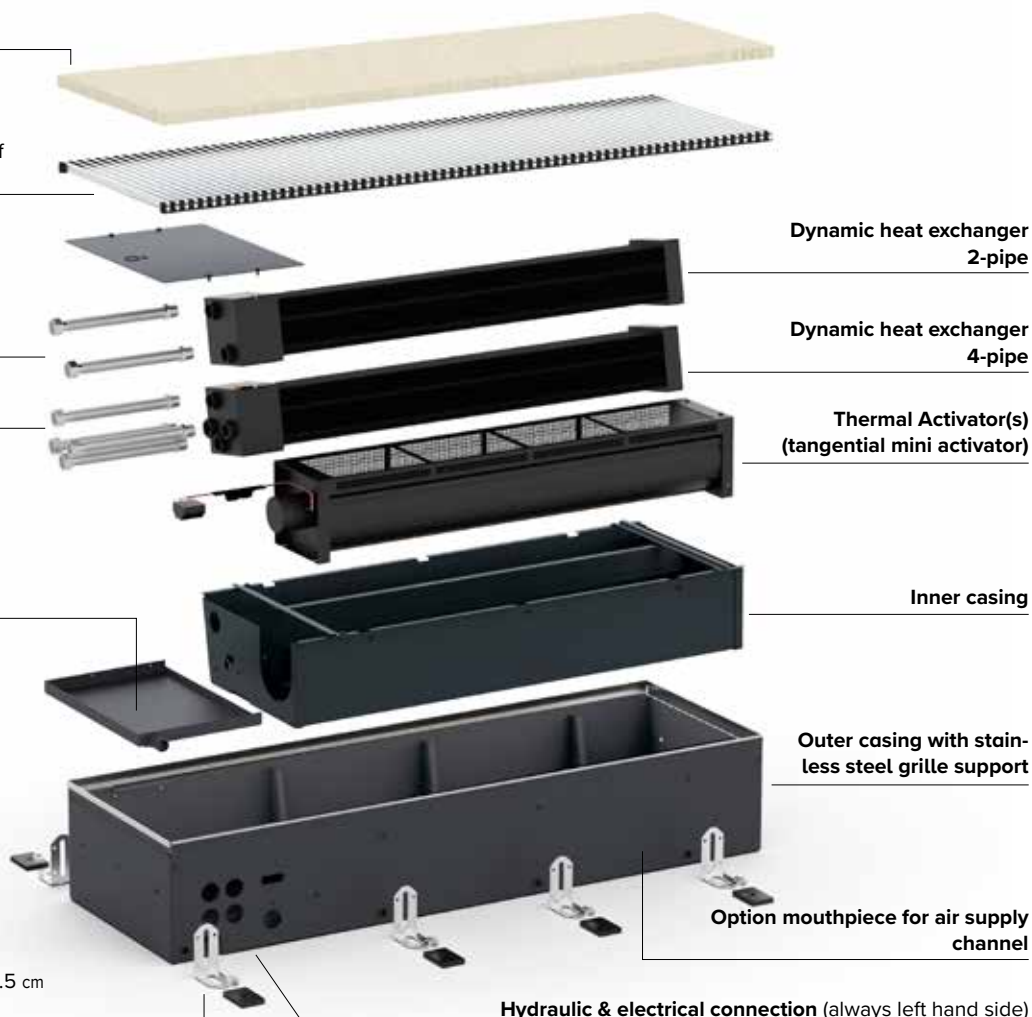
Grille

Several styles and colours in anodized aluminium and a range of wood finishes

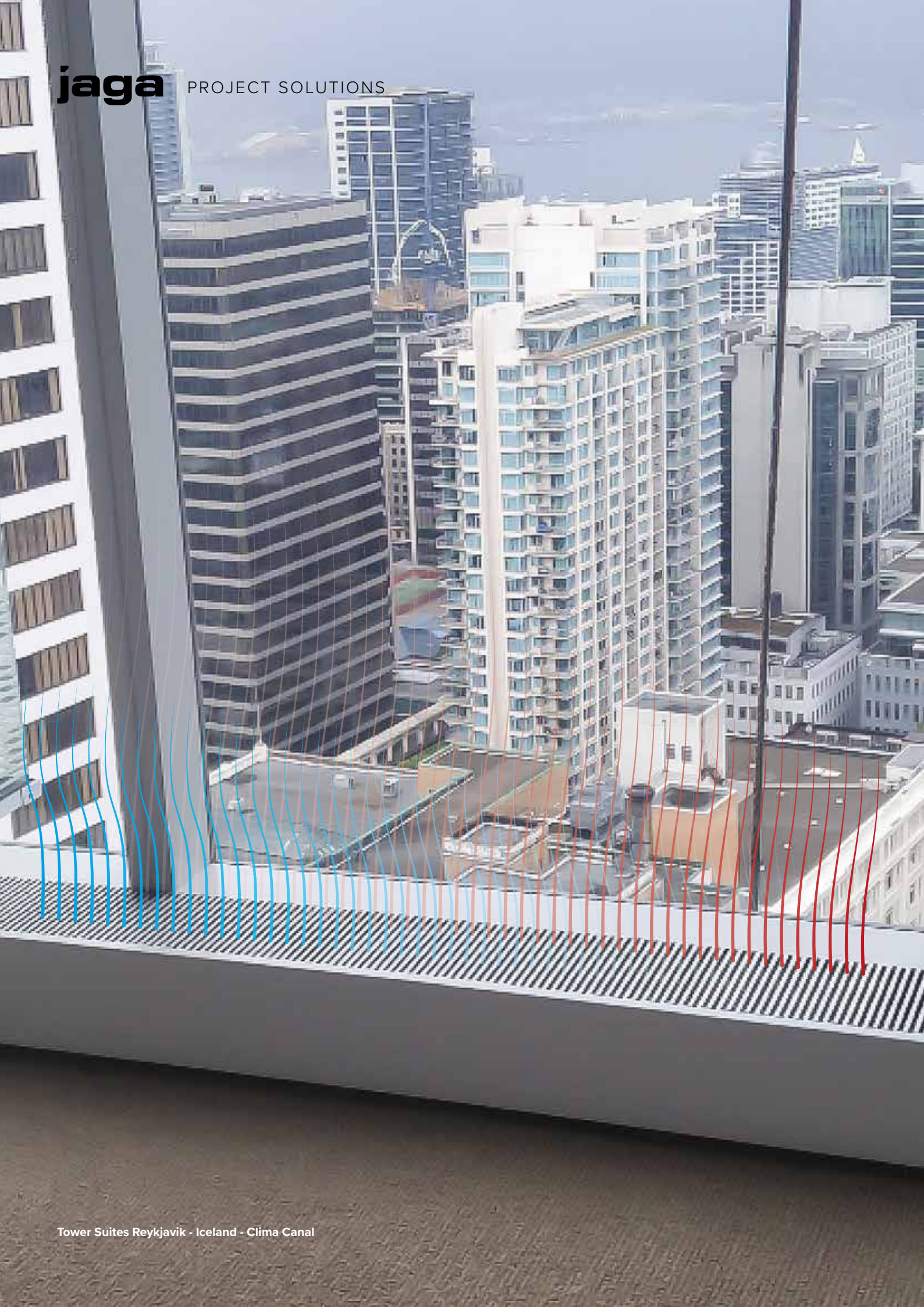
Stainless steel flexible connections 1/2", 15 cm long

Condensate tray, for drainage (ø 2 cm) of condensate water.

Feet with height adjustment 0 > 4.5 cm
Provided with acoustic decoupling



Hydraulic & electrical connection (always left hand side)



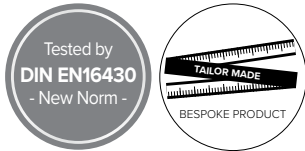
CLIMA CANAL FLOOR MOUNTED

COMPLETE CLIMATE CONTROL IN A SOCKET



jaga
QUALITY
MADE IN BELGIUM

Jaga Clima Canal not only fits in the floor but can be installed in various ways. The numerous installation options ensure architectural freedom. Matching custom grilles are available in every color and size. Air inlet and outlet via the top grille. With the same powerful outputs as the Clima Canal that is built into the floor.



Customization possible for every project!



Tower Suites Reykjavik - Iceland - Clima Canal



CLIMA SLIM WITH DESIGNER CASING

COMPLETE CLIMATE CONTROL IN A SLIM DESIGNER CASING.



jaga
QUALITY
MADE IN BELGIUM

Jaga Clima Canal not only fits in the floor but can be installed in various ways. Also in a slim, sleek and sturdy casing, possibly from wall to wall. The numerous installation options ensure architectural freedom. Matching custom grilles are available in every color and size.

COMPOSITION

Grille

Several styles and colours in anodized aluminium and a range of wood finishes



Thermal Activator(s)
(tangential mini activator)



Dynamic heat exchanger

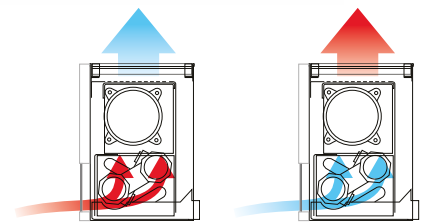


Condensate tray, for drainage (ø 2 cm) of condensate water.



Casing

Laquered casing in sendzimir galvanized steel plate



Customization possible for every project!





MINI CANAL PRO

LOW-H₂O HEAT IN A COMPACT FLOOR SOLUTION

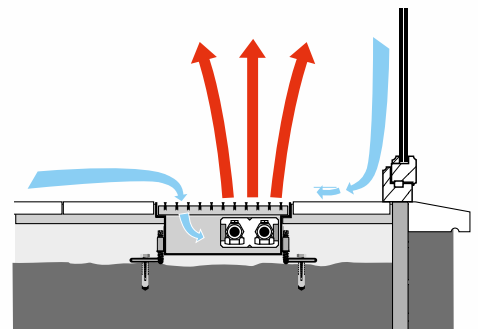


jaga
QUALITY
MADE IN BELGIUM

For large window areas in living spaces and winter gardens, but also for shop windows and offices. With a height of only 9 cm or more, Mini Canal Pro is even suitable for buildings with multiple floors and floating floors. Hidden under the grille is a super-fast Low-H₂O element. The entire interior is “invisible” because of the dark grey lacquer. The last thing that stands out is the passable cover grille, which can be adjusted to the interior.



Customization possible for every project!





Customization possible for every project!

STANDARD GRIDS

Material, color, spacing and free air flow of your choice

Wooden grilles



Oak natural
Oak varnished

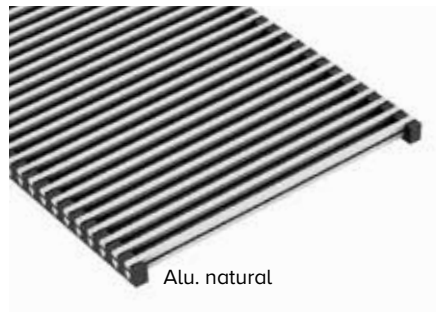


Beech natural
Beech varnished



Merbau natural
Merbau varnished

Aluminium grilles



Alu. natural



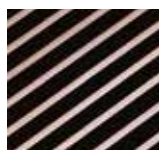
Alu. lacquered

Aluminium grilles

Roll-up
Alu. natural



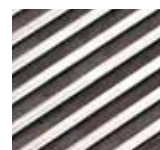
Black



Dark brown



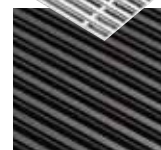
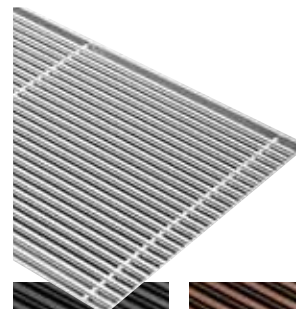
Brass coloured



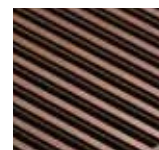
Stainless steel

Aluminium grilles

Designo
Alu. natural



Black



Dark brown



Brass coloured



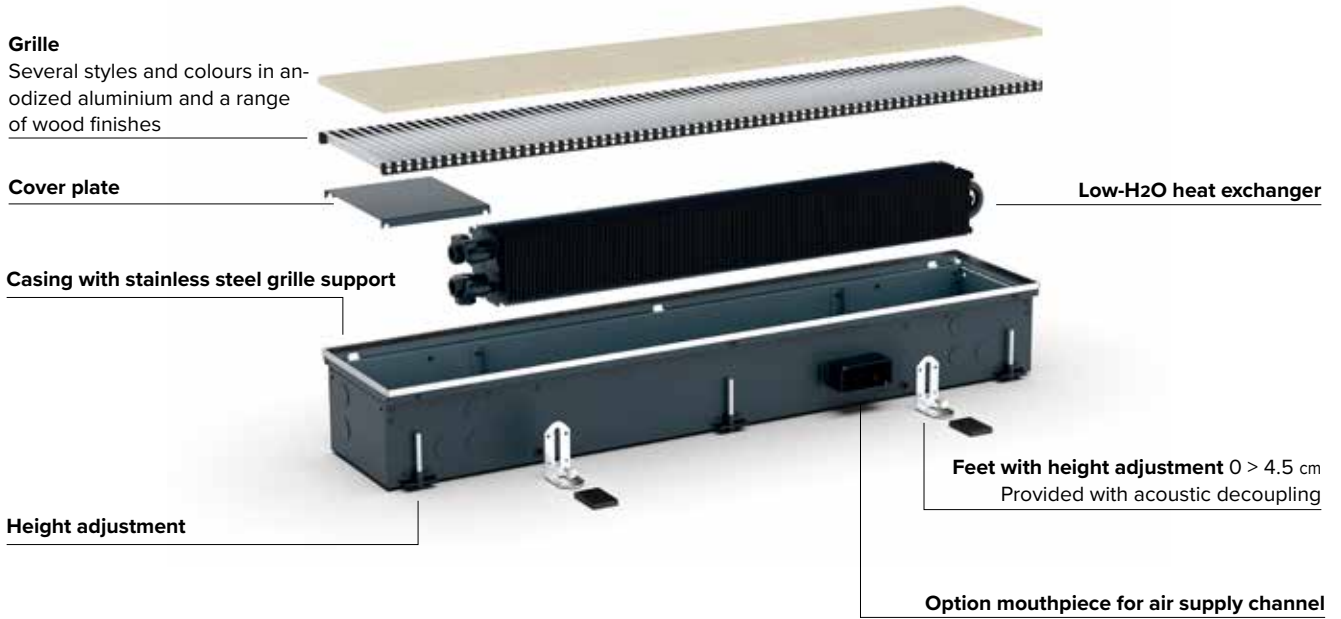
Alu. lacquered

All inner and outer corners can be made to measure

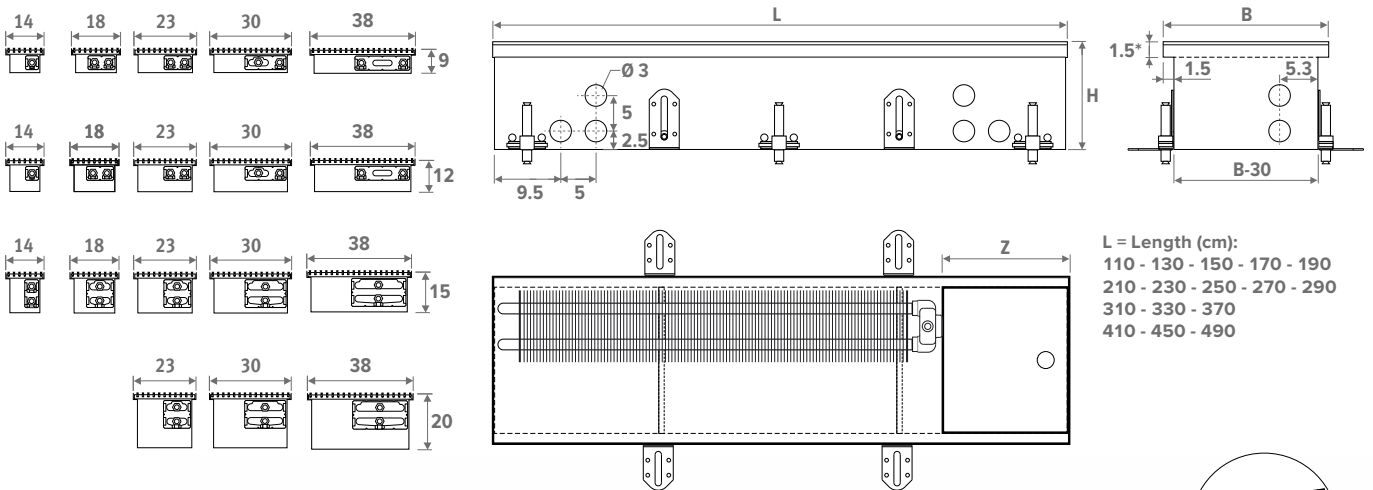


MINI CANAL PRO

COMPOSITION



STANDARD DIMENSIONS (in cm)



Customization possible for every project!



VENTILATION

Integration of ventilation possible.
Option mouthpiece for air supply channel



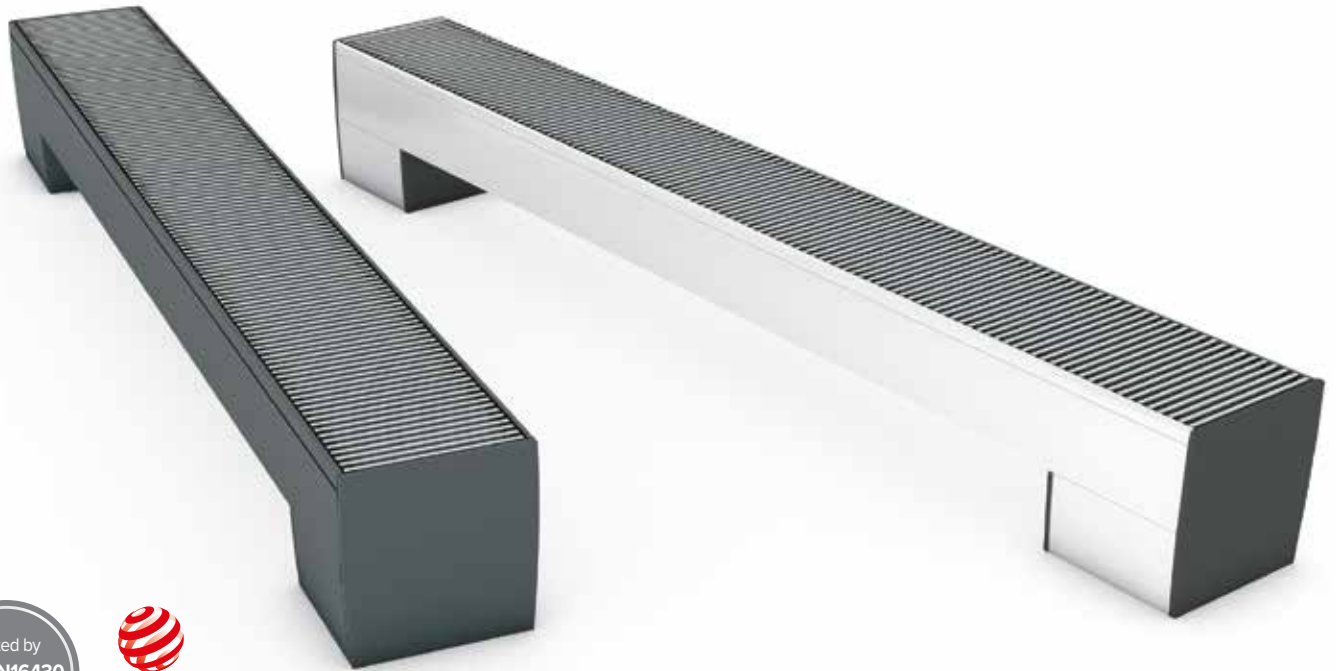
FREEDOM CLIMA

A PERFECT COMBINATION OF DESIGN AND TECHNOLOGY

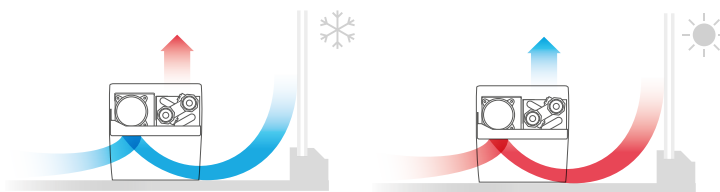


jaga
QUALITY
MADE IN BELGIUM

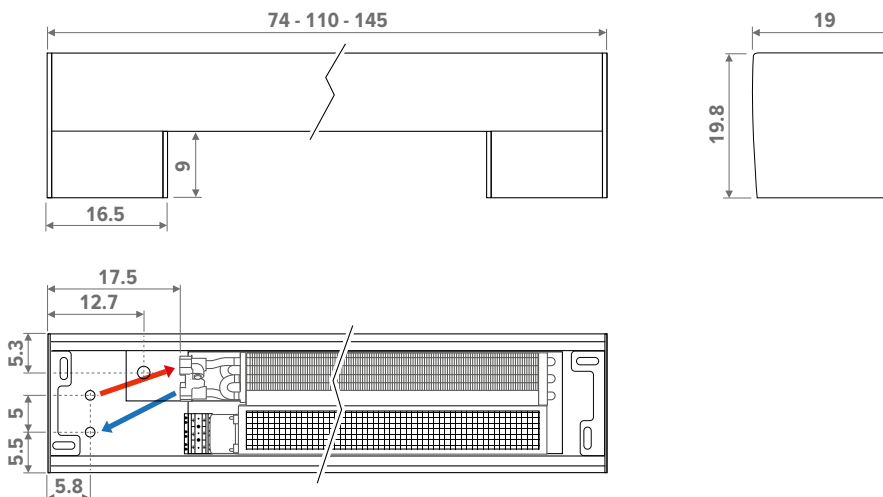
The casing shell is based on a gently curved, double-skin aluminium profile, resulting in an extremely strong radiator with a stylish and unique design. Elegant aluminium or stainless steel grilles complete the refined finish. Freedom represents the pinnacle of energy-efficiency, sustainability and beautiful design!



red dot award
 product design



STANDARD DIMENSIONS (in cm)





CLIMA BEAM

BUILT-IN OR CEILING-MOUNTED



jaga
QUALITY
MADE IN BELGIUM

The Clima Beam cools physically in the most ideal way. The hot rising air is drawn in by the DBH activators and cooled by the Low-H₂O heat exchanger. The cooled air comes down slowly and evenly into the room. Because of the “dry cooling”, there are no energy losses due to condensation. Also suitable for heating at low water temperatures.



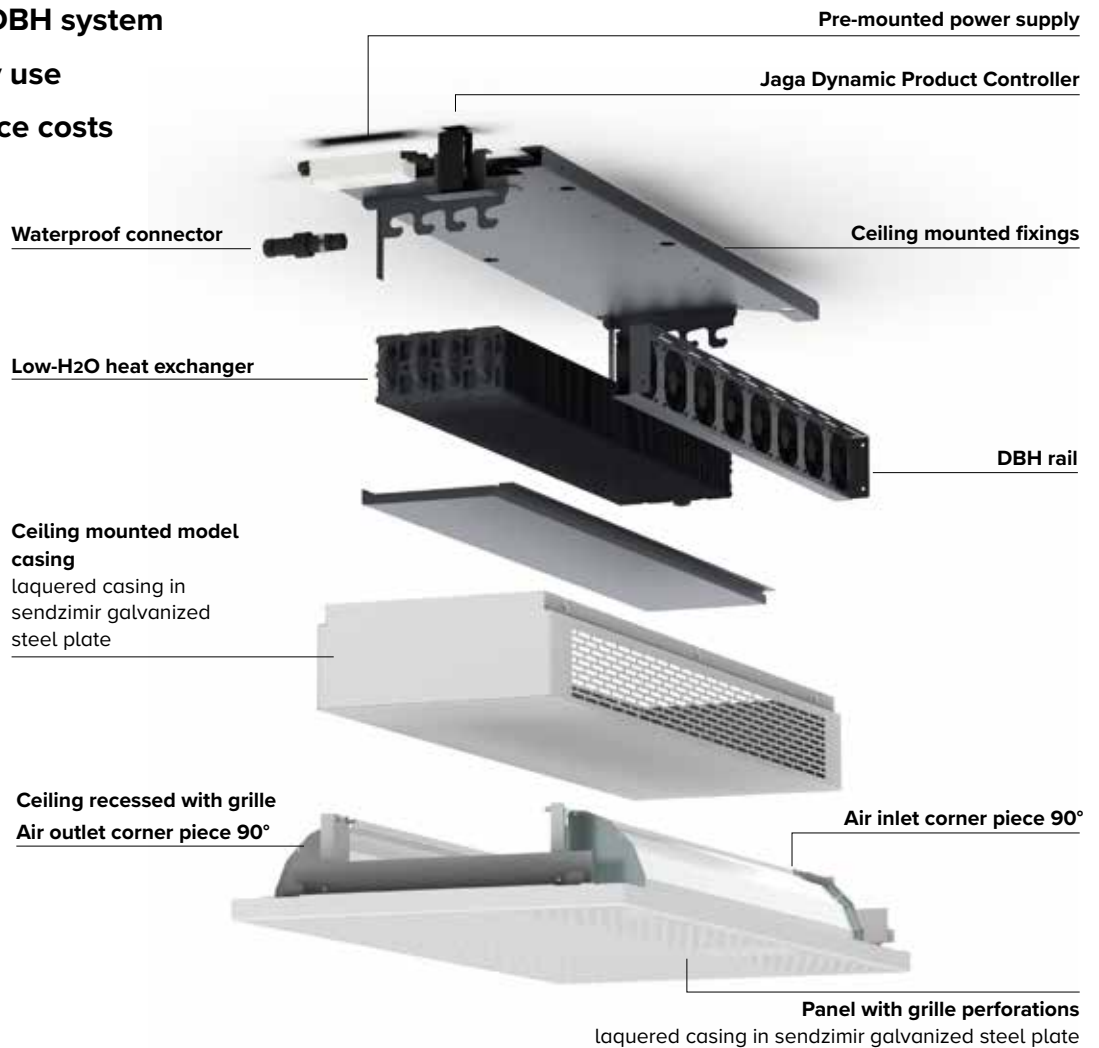
Built-in ceiling

Ceiling recessed with grille

Ceiling mounted model

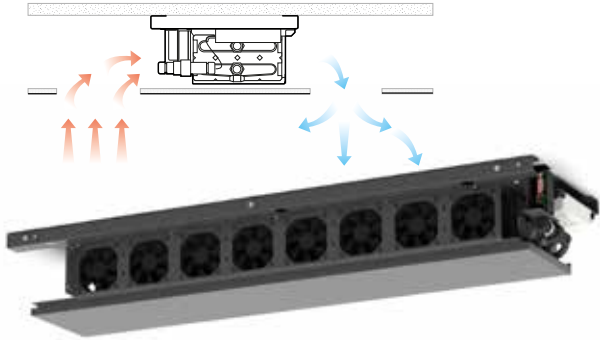
- Easy installation
- Heating and light cooling
- Whisper-quiet DBH system
- Efficient energy use
- Low maintenance costs

COMPOSITION

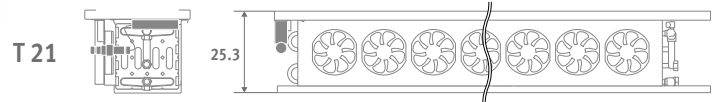
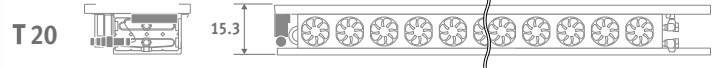
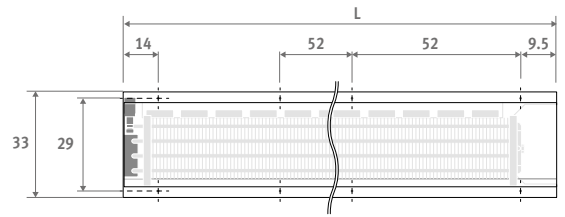


Clima Beam Vertical.

BUILT-IN-CEILING

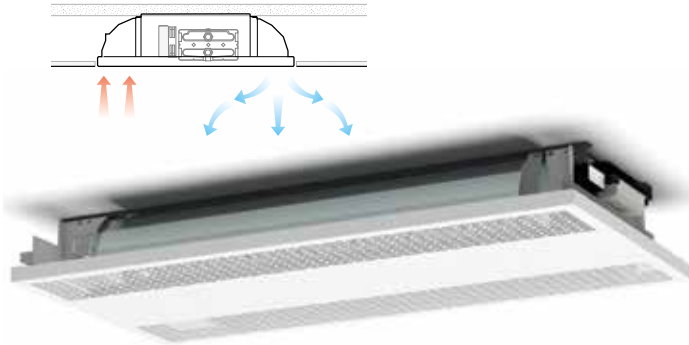


STANDARD DIMENSIONS (in cm)

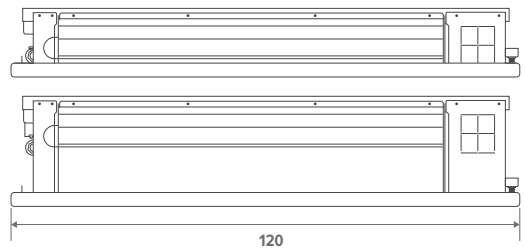
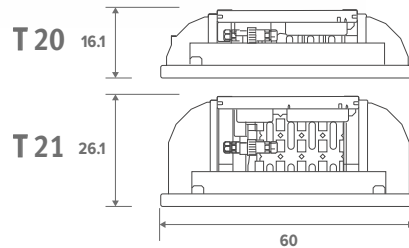
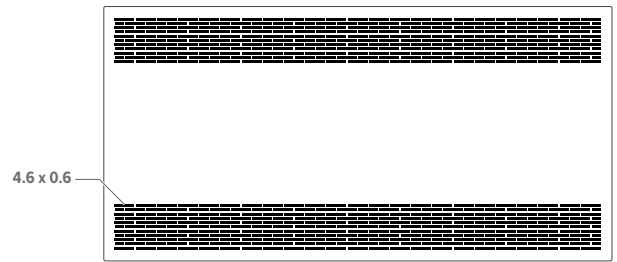


L = Length (cm):
120 - 150 - 170 - 190 - 210 - 230 - 250 - 290

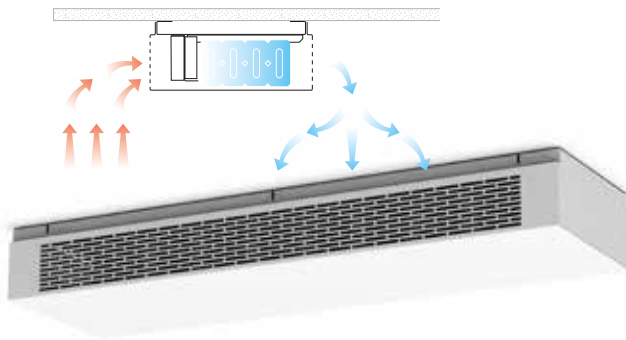
CEILING RECESSED WITH GRILLE



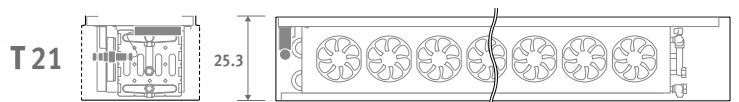
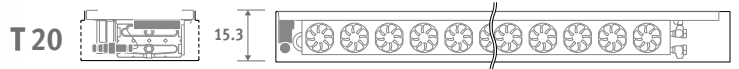
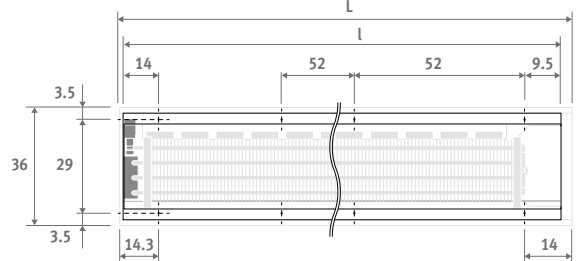
STANDARD DIMENSIONS (in cm)



CEILING MOUNTED MODEL



STANDARD DIMENSIONS (in cm)



L = Length (cm):
120 - 150 - 170 - 190 - 210 - 230 - 250 - 290
L = Length (cm):
115 - 145 - 165 - 185 - 205 - 225 - 245 - 285

CLIMA BEAM





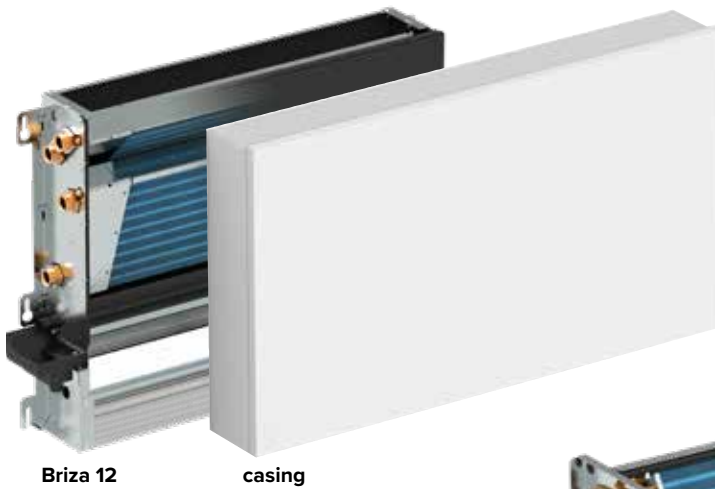
BRIZA

ULTRA-SLENDER AND SUPER-STRONG



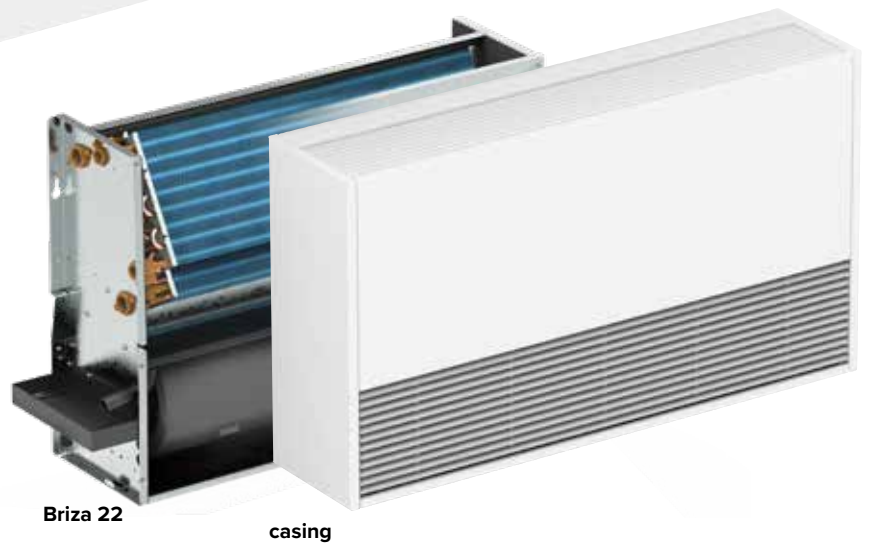
jaga
QUALITY
MADE IN BELGIUM

Briza is a climate unit with a dual personality: heat in winter and refreshing coolness in summer. It provides you with the perfect indoor climate throughout the year. The secret behind the Briza comfort system is the combination of our Low-H₂O technique and a very quiet dynamic system, but dynamic system. When connected to a heat pump or chiller, the Briza provides energy-efficient cooling. Briza is the slimmest model on the market with such a high output, and is also available in a wall-mounted model.



Briza 12

casing



Briza 22

casing



Custom project: Briza floor solution



INSTALLATION IN A WALL RECESS

BUILT-IN CEILING



Hydraulic connection
2-pipe 3/4"
4-pipe 3/4"

Sturdy casing manufactured from electro-galvanised steel

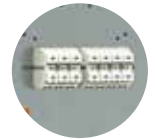
Heat exchanger with hydrophilic coating for optimum cooling performance

Metal condensate tray with epoxy-polyester coating

Tangential fans



Electrical connection



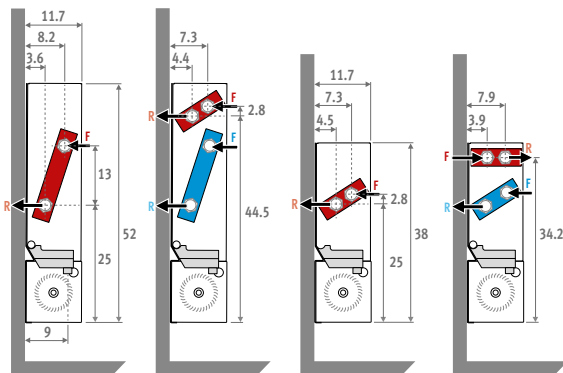
EC motor 230 VAC 0-10V

Stainless steel air filter

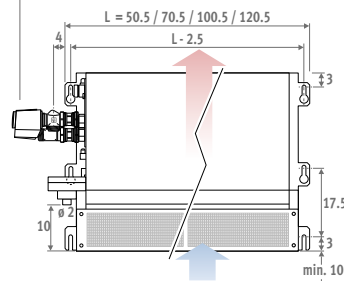
Mounting of the fan blade using dust/oil-free ball bearings

DIMENSIONS (in cm)

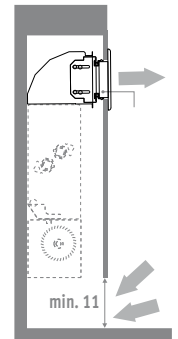
H 52 / 2-pipe H 52 / 4-pipe H 38 / 2-pipe H 38 / 4-pipe



Option connection set for 2-pipe or 4-pipe



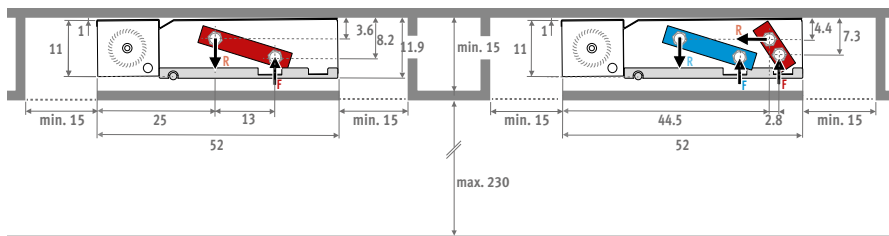
Built-in model with air outlet corner piece



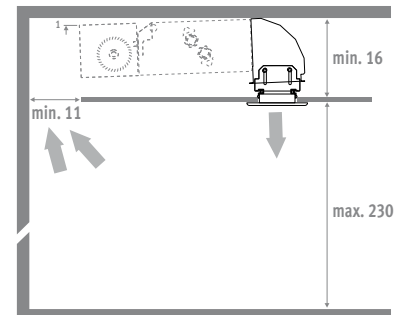
BUILT-IN CEILING (in cm)

H 52 / 2-pipe

H 52 / 4-pipe

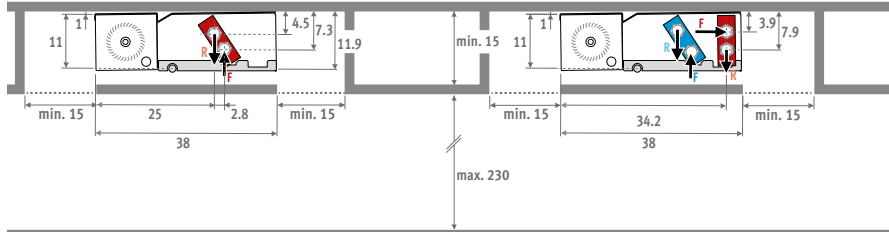


Built-in model with air outlet corner piece



H 38 / 2-pipe

H 38 / 4-pipe

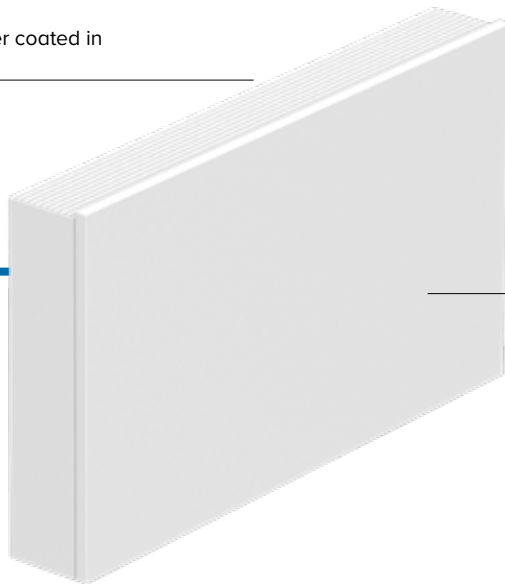


WALL MOUNTED MODEL

Aluminium top grille, powder coated in the same colour as the unit

NEW

Briza Plug & Play



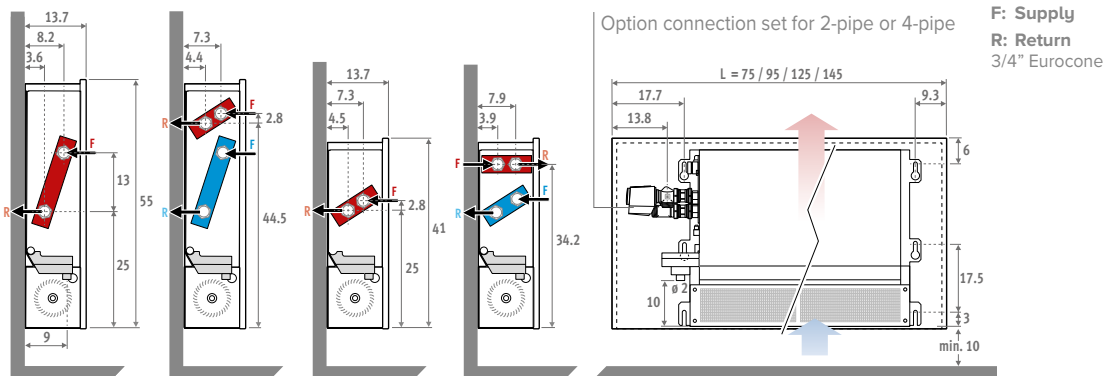
CEILING MOUNTED MODEL



Laquered casing in sendzimir galvanized steel plate
Standard colours:
- traffic white RAL 9016 (133), soft touch lightly structured satin powder coating
- sandblast grey (001), fine texture metallic powder coating
Other colours: see colour chart

DIMENSIONS (in cm)

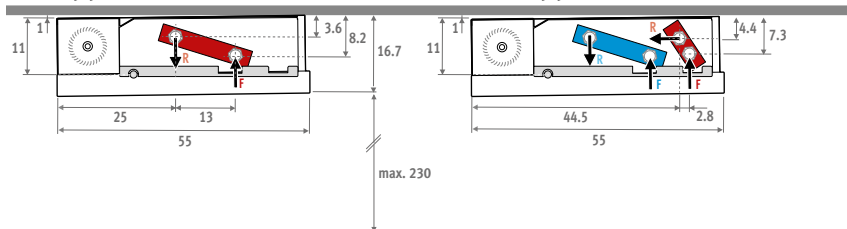
H 55 / 2-pipe H 55 / 4-pipe H 41 / 2-pipe H 41 / 4-pipe



CEILING MOUNTED MODEL (in cm)

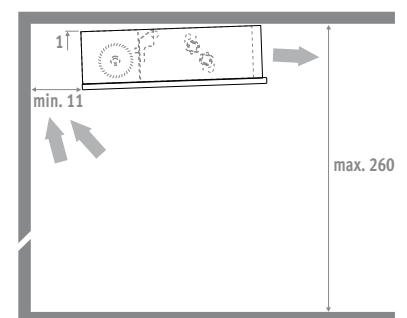
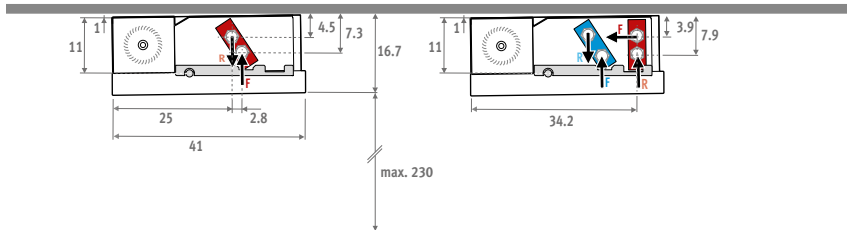
H 55 / 2-pipe

H 55 / 4-pipe



H 41 / 2-pipe

H 41 / 4-pipe



INSTALLATION IN A WALL RECESS

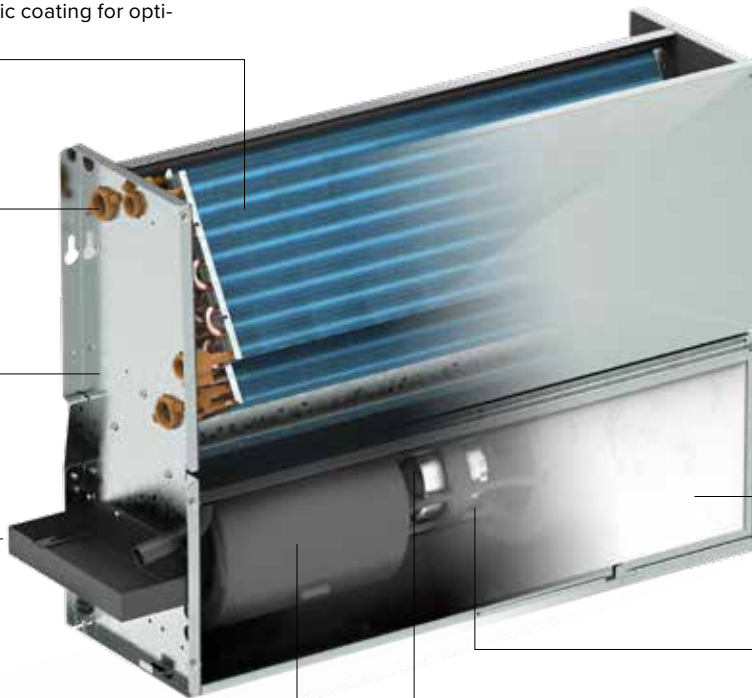


Heat exchanger with hydrophilic coating for optimum cooling performance

Hydraulic connection
2-pipe G3/4"
4-pipe G1/2"

Sturdy casing manufactured from electro-galvanised steel

Metal condensate tray with epoxy-polyester coating



Electrical connection

Filter Class G2

Mounting of the fan blade using dust/oil-free ball bearings

Centrifugal fan(s) with twin inlet

Greentech EC motor 230 VAC 0-10V



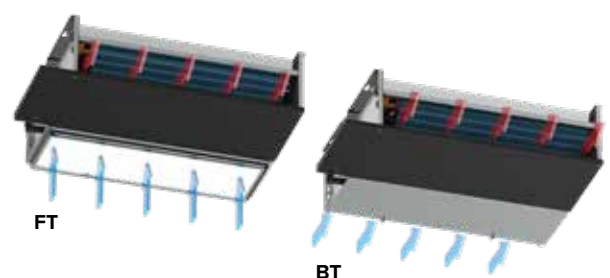
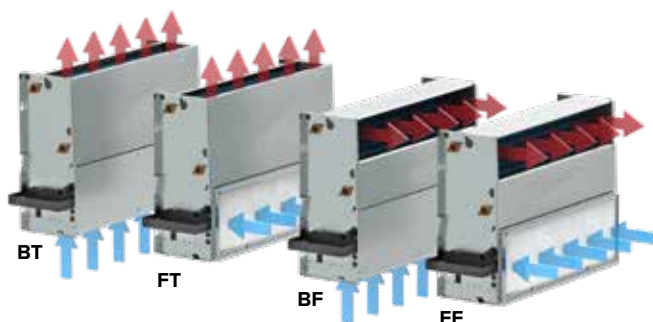
EASY INSTALLATION

The units are light and compact. In order to facilitate the installation, the construction is done with an eye for detail. Despite its small dimensions, there is sufficient space for connecting and installing additional components.

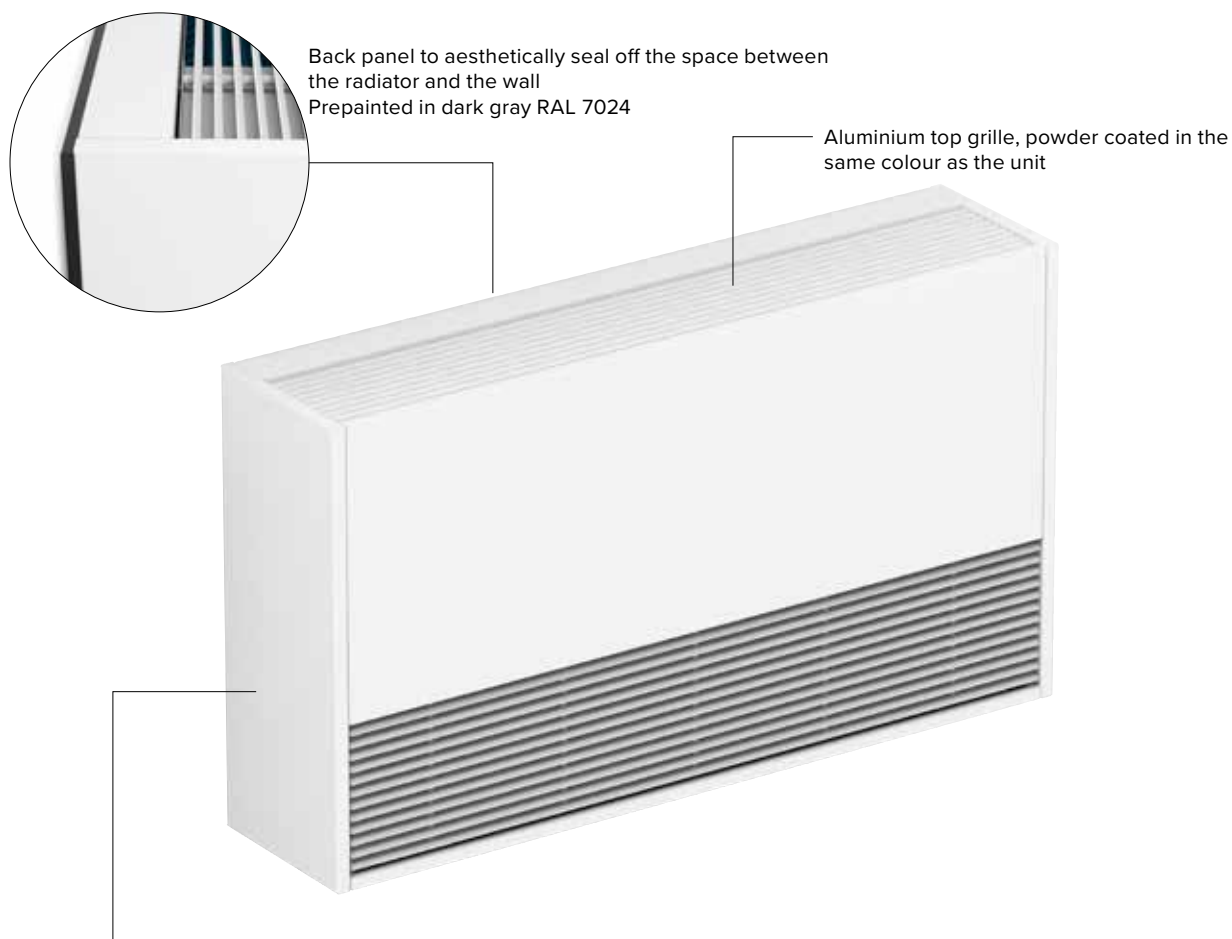
GREENTECH EC-MOTORS

EC motors reduce operating costs, reduce the impact on the environment and impress with their quiet operation. Due to the higher efficiency of the EC motors, the energy consumption is directly linked to the rotation speed and thus the flow rate of the fan. The actual power consumption is determined by the (variable) speed.

BUILT-IN CEILING

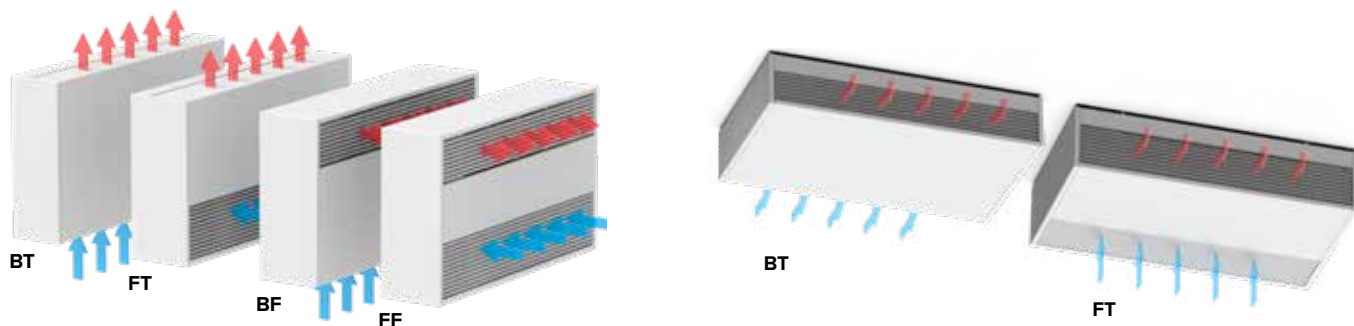


WALL MOUNTED MODEL



Laquered casing in sendzimir galvanized steel plate
Standard colours:
 - traffic white RAL 9016 (133), soft touch lightly structured satin powder coating
 - sandblast grey (001), fine texture metallic powder coating
 Other colours: see colour chart

CEILING MOUNTED MODEL

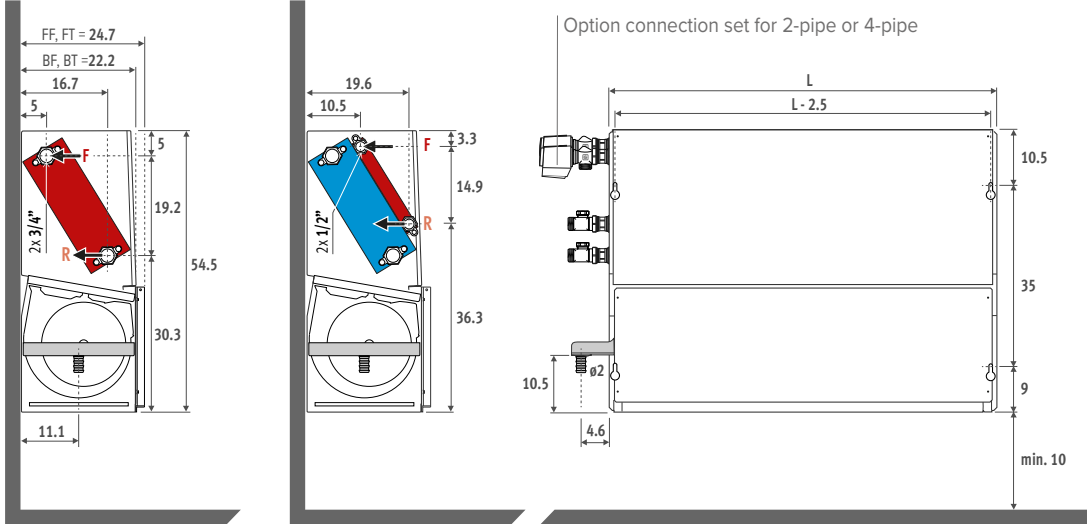


INSTALLATION IN A WALL RECESS

DIMENSIONS (in cm)

2-PIPE

4-PIPE

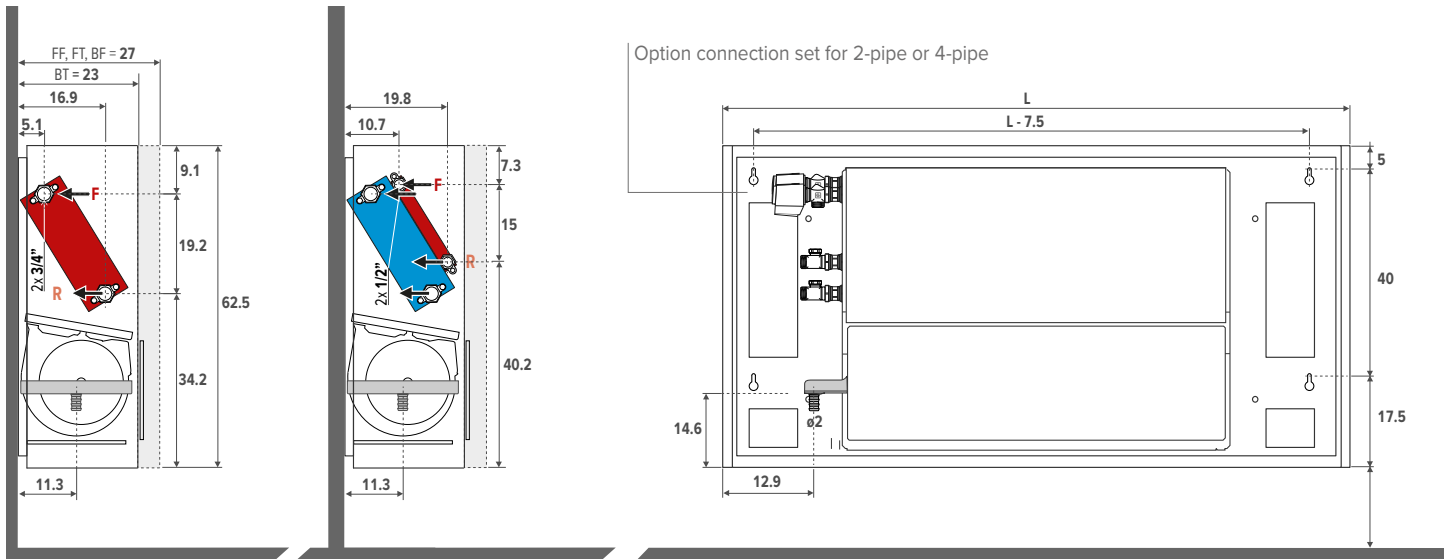


WALL MOUNTED MODEL

DIMENSIONS (in cm)

2-PIPE

4-PIPE



APPLICATIONS



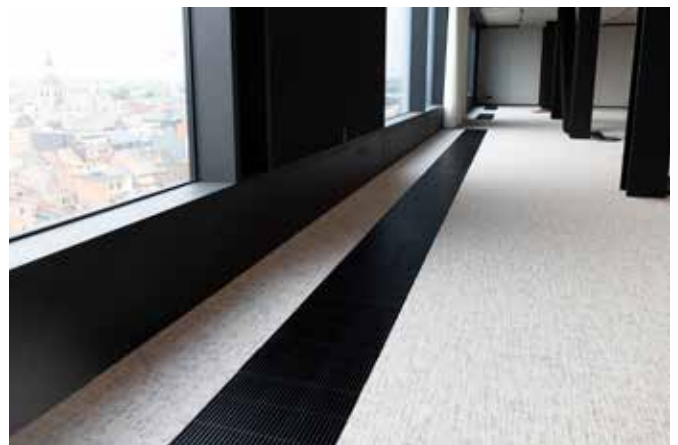
Built-in ceiling

Installation



Briza floor solution

Installation



Finished

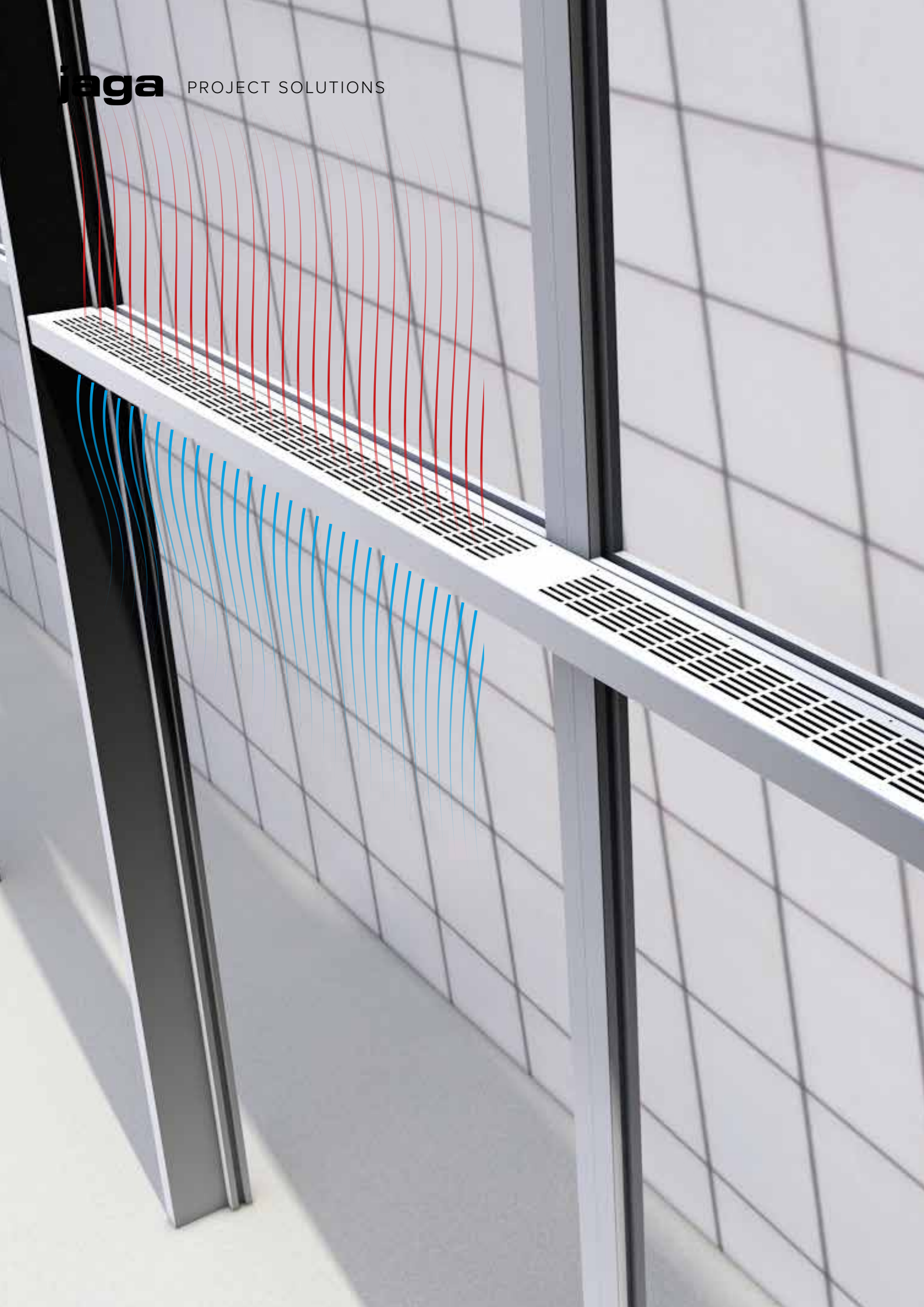


Installation in a wall recess

Installation



Finished



OKNO

FOR GLASS FACADES AND PANORAMIC WINDOWS

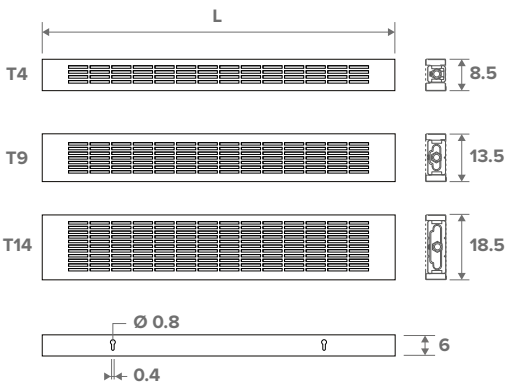


jaga
QUALITY
MADE IN BELGIUM

The cold air that comes down the window glass is interrupted by the heat flow from the OKNO unit's heat exchanger. The installation of an artificial air curtain or other artificial solutions can thus be avoided. Ideally, the OKNO heating unit is integrated in a glass section. The heating unit heats the rising air flow without also heating the glass.



STANDARD DIMENSIONS (in cm)

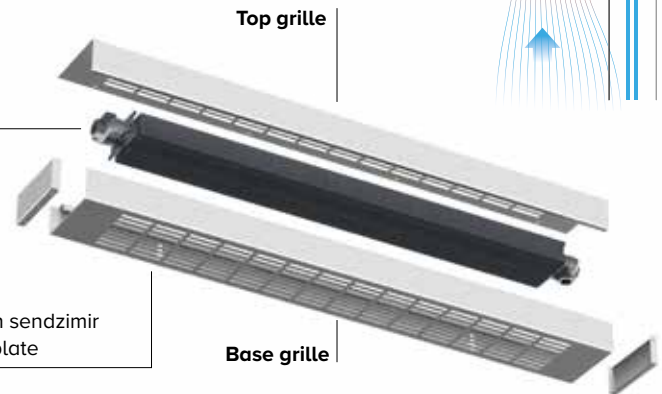


L = Length (cm):
 60 - 70 - 80 - 90 - 100 - 110 - 120
 140 - 160 - 180 - 200 - 220 - 240

COMPOSITION

Low-H₂O
 heat exchanger

casing
 laquered casing in sendzimir
 galvanized steel plate





AVS UNIT HEATER

AIR VENTURI SYSTEM INCLUDED



jaga
QUALITY
MADE IN BELGIUM



The Jaga unit heater is the master of air flow, even in the biggest of spaces. Its secret weapon? The Air Venturi System, which efficiently blends heated air with the ambient air. The result: faster heating, better temperature distribution, lower energy consumption. Talk about great results!

COMPOSITION

Aerodynamic exhaust made of satin black lacquered aluminium

Laquered casing in sendzimir galvanized steel plate



Plastic HyBlade® fan

Greentech EC-motors



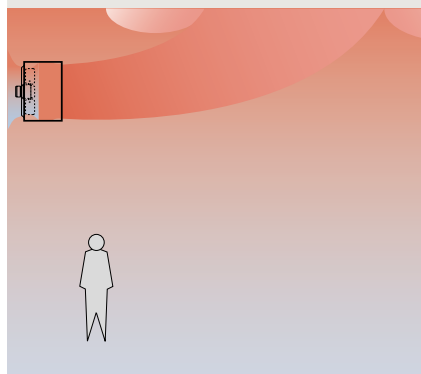
Low-H₂O heat exchanger

WHY AVS®?

Higher air flow, lower exhaust temperature or additional fans can soften up the problem, but result in a considerable increase in cost or more noise. The main problem with unit heaters in general is the heat accumulation at the roof or ceiling level especially in high level roof spaces. The temperature difference between the floor and the ceiling increases in proportion to the exhaust temperature of the unit heater. The higher the exhaust temperature the faster the heated air rises, pushing the cooler down to floor level. Consequently more energy will be required to heat up the floor area in order to create a comfortable temperature.

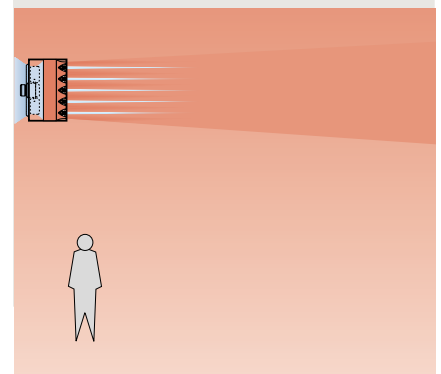
STANDARD UNIT HEATERS

Due to the higher air exhaust temperature the hot air will rise too quickly and the cooler air will consequently be pushed downwards.

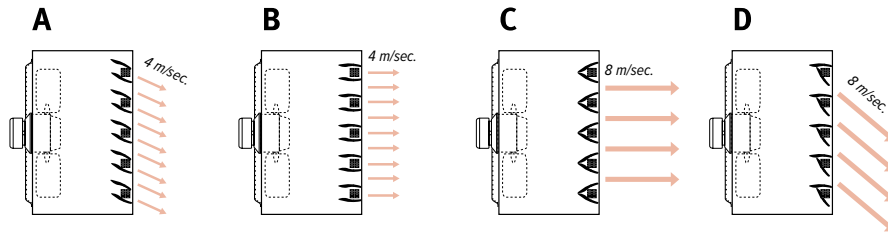


THE JAGA SOLUTION: AIR VENTURI SYSTEM

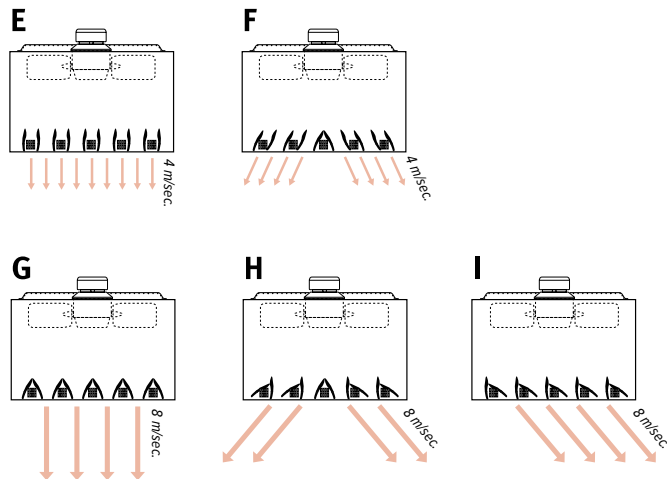
With the Air Venturi System the air exhaust temperature is lower, which greatly reduces the up-draught giving you an even temperature, faster heating up and better energy efficiency.



**SETTINGS
WALL MOUNTING**



Ceiling mounting



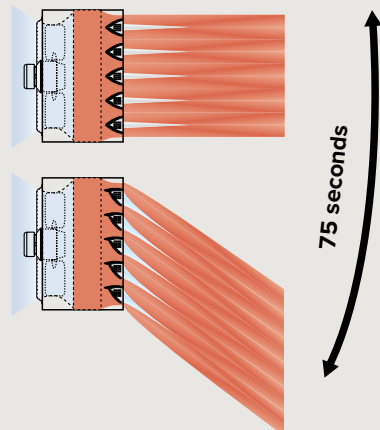
THE MODULATING AVS® VERSION

With the modulating AVS® version the exhaust louvres are linked in pairs and connected to a servo motor. This motor produces a continuous back and forth movement of the adjustable louvres. This creates turbulence and provides an even better temperature distribution. The angle of movement can easily be adjusted from 0 to 90°. A complete cycle takes around 150 seconds.

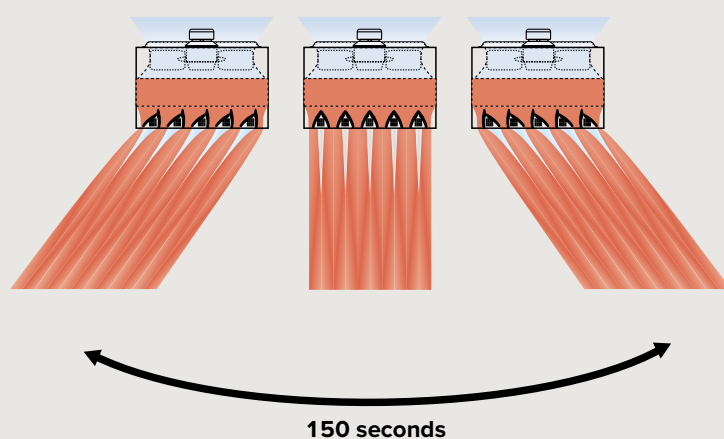
The modulating operation is integrated into the equipment and therefore cannot be delivered as an accessory.

Mini unit heater (code 021 and 031) are not available as a modulating version.

Wall mounting: position 45°

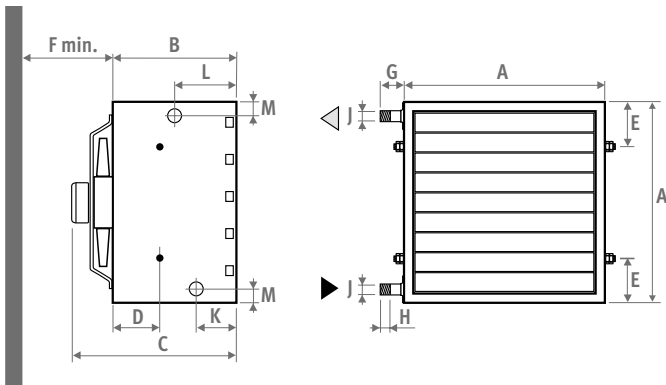


Ceiling mounting: position 90°



AVS UNIT HEATER

DIMENSIONS (in cm)



TYPE	021	031	121	131	221	231	321	331	421	431
A	41	41	53	53	65	65	77	77	89	89
B	40	40	40	40	40	40	40	40	40	40
C	43	43	48	48	49.8	49.8	57.2	57.2	55.1	55.1
D	15.1	15.1	15.1	15.1	15.1	15.1	15.1	15.1	15.1	15.1
E	10.5	10.5	11.5	11.5	12.5	12.5	13.5	13.5	14.5	14.5
F	30	30	35	35	45	45	56	56	65	65
G	4.8	4.8	4.8	4.8	4.8	4.8	5.1	5.1	5.1	5.1
H	2.2	2.2	2.2	2.2	2.2	2.2	2.5	2.5	2.5	2.5
ø J	G3/4"	G3/4"	G1"	G1"	G1"	G1"	G6/4"	G6/4"	G6/4"	G6/4"
K	12.9	12.9	12.9	12.9	12.9	12.9	12.9	12.9	12.9	12.9
L	19.8	19.8	19.8	19.8	19.8	19.8	19.8	19.8	19.8	19.8
M	4.5	4.5	4.5	4.5	4.5	4.5	5.2	5.2	5.2	5.2
kg	20	22	30	32	43	46	56	59	71	75

OPTIONS



jaga

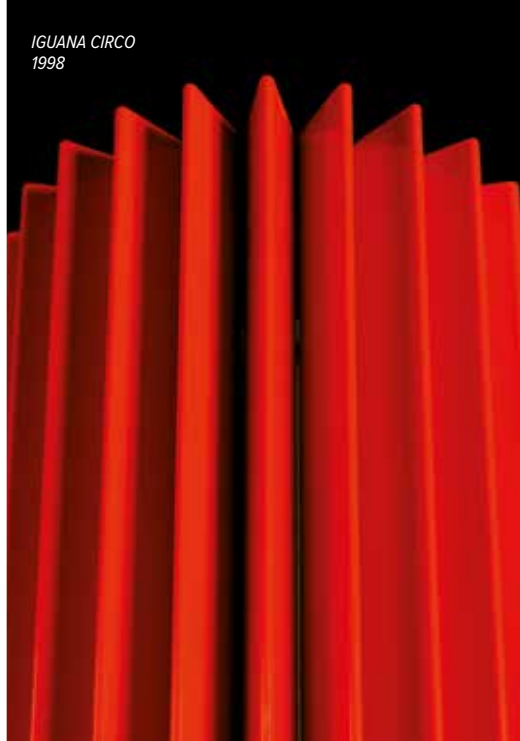


A vintage-style photograph of a woman with blonde hair sitting on a red Eames-style chair. She is wearing a sleeveless, knee-length dress with a black base and a pattern of white and red flowers. She is holding an open magazine with a colorful landscape on the cover. The setting includes a window with white blinds, a light blue radiator, and a small white table with two red mugs. The text "TIMELESS DESIGN SINCE 1962" is overlaid in white capital letters across the middle of the image.

TIMELESS DESIGN SINCE 1962



LINEA PLUS
1989



IGUANA CIRCO
1998



KNOCKONWOOD FREESTANDING DBE
2004



HEATWAVE
2007

***Jaga radiators
not only warm
your home, they
also warm your
heart.***



PLAY
2009



VERTIGA KIREI
2011



FREEDOM
2014



BRIZA 8
coming soon

EUROPEAN DESIGN
AWARD - LINEA PLUS
1990



TROPHÉE DU DESIGN
PARIS - GEO
1997



ISH-DESIGN AWARD -
IGUANA
1999



IF-DESIGN AWARD
- KNOCKONWOOD &
STRADA
2003



VIZO - TRIËNNALE -
IGUANA & GEO
2001



LEEUEW VAN DE EXPORT
2003



COMPANY OF THE YEAR
2003



BELGIAN BUILDING
COMMUNICATION
2004



HENRY VAN DE VELDE -
BESTE DESIGN BEDRIJF
2004



BENELUX EVENT
AWARDS - BOOST
PARTY
2004



DESIGN MANAGEMENT
EUROPE AWARDS
2009



DME AWARD_

HENRY VAN DE VELDE
PUBLIC AWARD - PLAY
2009



REDDOT DESIGN
AWARD - TWINE
2009



REDDOT DESIGN
AWARD - PRODUCT
2013



REDDOT DESIGN
AWARD - AURORA
2018



Pioneer in timeless design

HEATER DESIGN CHANGED FOREVER

In 1989, Jaga was the first to win a design award with the Linea Plus thanks to an inventive and slimming perforated grid. The Iguana family, in turn awarded in 1999, meant a completely new design language for the heating industry. A new construction technique was developed especially for these units, which were based on a child's drawing of a radiant sun. In addition to techniques and designs, Jaga also wasn't afraid to experiment with materials. Knockonwood was the first mass produced wooden designer heater. The frivolous, concrete curls of the Heatwave have proven to be the perfect combination between traditional finesse, industrial materials and production techniques. The Vertiga Kirei perhaps embodies the Jaga values best: the casing from the non-edible part of the soy plant means a reduction in the amount of waste!

STANDOUTS IN DESIGN AND TECHNOLOGY

Climate change and an evolution in building techniques require an ecological approach for heating, cooling and ventilation. Jaga already developed the first dynamic heaters that can combine these functions in 2003, and you can find out how this has grown into a wide range of ecological solutions for every season

BELGIUM JAGA NV

Jaga advies centrum | Verbindingslaan 16 | 3590 Diepenbeek
+32 (0) 11 29 41 11 info@jaga.be jaga.be

THE NETHERLANDS JAGA KONVEKTCO BV

Jaga Advies Centrum | 5221 EA 's-Hertogenbosch
073 63 123 60 info@jaga.nl jaga.nl

GERMANY JAGA DEUTSCHLAND GMBH

Product Presentation Center | Adenauerstrasse 20, Geb. A2 | OG 1 D-52146 Würselen
+49 (0)240 589 241 40 info@jaga.de jaga.de

FRANCE JAGA FRANCE

130 Boulevard de la Liberté | FR-59000 Lille
03 20 04 42 30 info@jaga.fr

UNITED KINGDOM JAGA HEATING PRODUCTS (UK)

Jaga House | Orchard Business Park Bromyard Road | Ledbury - Herefordshire HR8 1LG
+44 (0) 1531 631533 jaga@jaga.co.uk jaga.co.uk

CZECH REPUBLIC ORGANIZAČNÍ SLOŽKA

U Trezorky 921/2 | 15800 Praha 5 - Jinonice
+420 220 190 516 info@jagacz.com jagacz.com

SPAIN CONVES

C/ Campello 5 | 03509 Finestrat | Alicante
966 83 03 03 proyectos@conves.es

AUSTRIA JAGA AUSTRIA

Josef-Koch-Straße 28 | 6440 Imst
+43 65 0800 80 99 eapperle@jaga.be

SWITZERLAND JAGA PRODUCT PRESENTATION CENTER

Neuer Zollhof 1 | 40221 Düsseldorf
+49 211 310 27 30 info@jaga.de

POLAND JAGA POLSKA SP. z o.o.

Galeria Saska Kępa | ul.Zwycięzców 28 lok. 26 | 03-938 Warszawa
+48 22 672 88 82 info@jaga.com.pl jaga.com.pl

CANADA / UNITED STATES JAGA CANADA CLIMATE SYSTEMS INC

375 University Ave. E. | Suite 205A | Waterloo, Ontario N2K 3M7 | Canada
info@jaga-canada.com jaga-canada.com

CHINA JAGA CLIMATE SYSTEM (SHANGHAI) CO., LTD.

CoolDocks Building 4 (Bund Area), 207 | No.653, Waima Road | Huangpu District | Shanghai
0086 21 32140929 400-820-6228 | danyu.sheng@jagachina.com | jagachina.com

ALL OTHER COUNTRIES

Jaga International
+32 11 29 41 12 | export@jaga.be | jaga.com

What about Jaga?!

Since its foundation in 1962, Jaga has focused on innovation, creativity and sustainability. Jaga is still an independent family business that follows its own course. A course in which social and ecological awareness are key and long-term thinking takes precedence. It allows Jaga to constantly invest in its own products. These products, according to the climate designer philosophy, use less energy and don't require as many materials to manufacture.

The products that leave the 50,000 m² large site in Diepenbeek can therefore be found all over the world and in a variety of buildings, including many ecological and certified projects (BREEAM, LEED ...). Jaga has branches or is represented in more than 25 countries, in Europe but also in countries such as Canada, USA, Russia, China ...





JAGA INTERNATIONAL JAGA NV

Verbindingslaan 16
B-3590 Diepenbeek

+32 11 29 41 12

export@jaga.be
www.jaga.com



www.fsc.org

MIX

Paper from
responsible sources
FSC® C017645



27200 05090004 - 18/01/2024 - JAGA N.V.