



MINI CANAL PRO

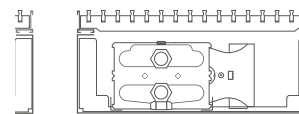
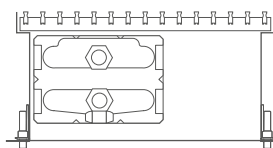
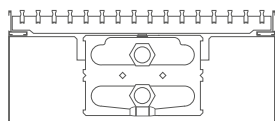


MINI CANAL PRO

CONTENT	3	TECHNICAL TABLE	20
MODEL OVERVIEW	4	Height 009	20
INTRODUCTION	5	Height 012	23
OVERVIEW GRILLES	6	Height 015	26
Pliable anodised aluminium grilles	6	Height 020	29
Rigid anodised aluminium grilles	8	THERMOSTAT	32
Designo rigid anodised aluminium grilles	9	CORRECTION FACTORS	34
Retractable anodised aluminium grilles	10	GUIDELINE FOR LIMITING FLOW NOISE	35
Retractable stainless steel grille	11	PRESSURE DROP	36
Roll-up wooden grilles	12	Type 04 other end	36
Designo roll-up wooden grilles	13	Type 05	37
TECHNICAL INFORMATION	14	Type 09	38
Composition	14	Type 10	39
Coding	15	Type 14	40
Standard delivery	15	Type 15	41
Product summary	16	Type 19	42
Dimensions	16	Type 20	43
Installation	16		
Operating principle	16		
Grille Overview	17		
Accessories	18		
Hydronic connection	19		

Do you need other height measurements? Then the Mini Canal is what you need!

Do you want Light Cooling as well? Then go for the Mini Canal Hybrid.



	MINI CANAL	MINI CANAL PRO	MINI CANAL HYBRID
OPERATING PRINCIPLE	natural convection	natural convection	convection with fan units
DIMENSIONS			
Height (in cm)	009 - 011 - 014 - 019	009 - 012 - 015 - 020	014
Width (in cm)	14 - 18 - 26 - 34 - 42	14 - 18 - 23 - 30 - 38	26 - 34 - 42
Length (in cm)	070 - 130 (in steps of 10 cm) 150 - 490 (in steps of 20 cm)	070 - 130 (in steps of 10 cm) 150 - 490 (in steps of 20 cm)	070 - 130 (in steps of 10 cm) 150 - 310 (in steps of 20 cm)
OUTPUT			
(75/65/20°C) Watts	76 - 4184	84 - 4407	517 - 8779
(16/18/27°C) Watts	-	-	49 - 380
HYDRONIC CONNECTION			
Opposite end connections	B14 H009 & B14 H011	B14 H009 & B14 H012	-
Same-end connection			✓
height	009 011 014 019	height 009 012 015 020	
width 14	- - ✓ ✓	width 14 - - ✓ ✓	
width 18	✓ ✓ ✓ ✓	width 18 ✓ ✓ ✓ ✓	
width 26	✓ ✓ ✓ ✓	width 23 ✓ ✓ ✓ ✓	
width 34	✓ ✓ ✓ ✓	width 30 ✓ ✓ ✓ ✓	
width 42	✓ ✓ ✓ ✓	width 38 ✓ ✓ ✓ ✓	
ELECTRICAL CONNECTION			
Power supply 230 VAC	-	-	optional
Power supply 24 VDC	-	-	optional
ACCESSORIES			
Anchorage	✓	-	✓
Ventilation	optional	optional	optional
Cover plate	optional	✓	optional
Acoustic strip	optional	optional	optional
Height adjustment 0 - 4.5 cm	optional	✓	optional
Height adjustment 4.5 - 10 cm	optional	optional	optional
Base insulation	optional	optional	optional
3-sided insulation	optional	optional	optional
GRILLE			
Rigid aluminium grilles	✓	✓	✓
Designo rigid aluminium grilles	✓	✓	✓
Roll-up aluminium grilles	✓	✓	✓
Roll-up stainless steel grille	✓	✓	✓
Roll-up wooden grilles	✓	✓	✓
Designo roll-up wooden grilles	✓	✓	✓
Pliable aluminium grilles	-	✓	-

MINI CANAL PRO

COMPACT DIMENSIONS AND SHALLOW INSTALLATION DEPTH

For large window areas in living spaces and winter gardens, but also for shop windows and offices. With a height of only 9 cm or more, Mini Canal Pro is even suitable for buildings with multiple floors and floating floors. Hidden under the grille is a super-fast Low-H₂O element. The entire interior is “invisible” because of the dark grey lacquer. The last thing that stands out is the passable cover grille, which can be adjusted to the interior.

- height from 9 cm
- delivered ready-made
- a range of grilles for every interior
- A perfectly regulated comfort temperature
- Low-H₂O technology with super conductive and ultra fast heat exchanger for low energy consumption and maximum heat emission
- 30 year warranty on the heat exchanger



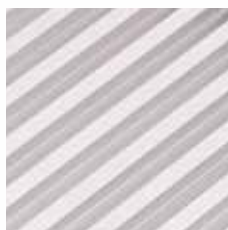
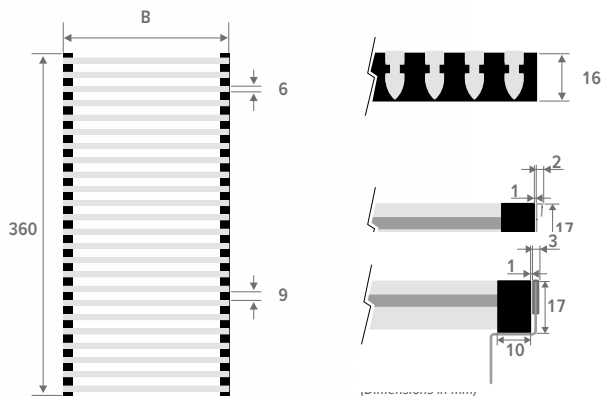


PLIABLE ANODISED ALUMINIUM GRILLES

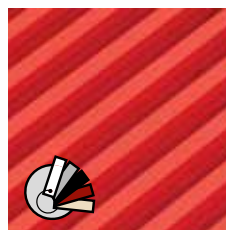
Aluminium panel grille with aerodynamically shaped transverse profiles in black vibration-free EPDM, grille supports EPDM rubber hardness 85.

PROPERTIES

- provided as standard to enable continuous installation
- sound-insulating EPDM rubber supports
- developed for easy maintenance of the units / the aluminium profiles are low maintenance
- eco-friendly, scratch-resistant powder coating with high UV-resistance
- free air flow: 60%
- no correction factor to apply on the output



BNA Alu. natural



BNC/XXX Alu. coated

 Our grilles are available in all colours, with the exception of Sand blast grey 001. In case of intensive use (installation in circulation areas, for example in front of sliding windows and doors), wear is evidently inevitable.

MINI CANAL PRO



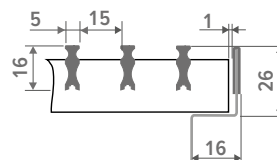
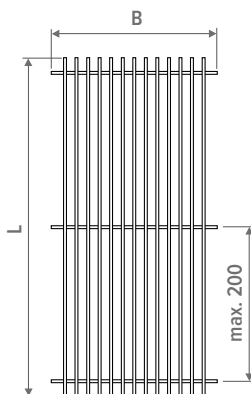


RIGID ANODISED ALUMINIUM GRILLES

Rigid anodized aluminium grille with matching colour frame.

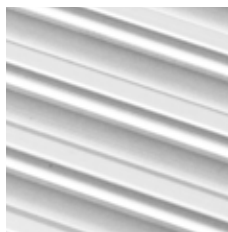
PROPERTIES

- eco-friendly, scratch-resistant powder coating with high UV-resistance
- free air flow: 75%
- no correction factor to apply on the output

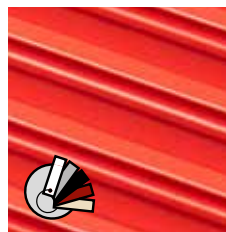


The width of the grille is 4 mm smaller and the length is 2 mm smaller than the width and length of the Mini Canal Pro.

Dimensional tolerance width grille: +2 mm
(Dimensions in mm)



SNA Alu. natural



SNC/XXX Alu. coated

! Our grilles are available in all colours, with the exception of Sand blast grey 001. In case of intensive use (installation in circulation areas, for example in front of sliding windows and doors), wear is evidently inevitable.



SBL Black



SDB Dark brown



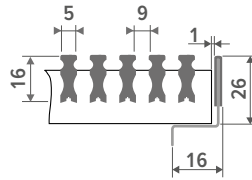
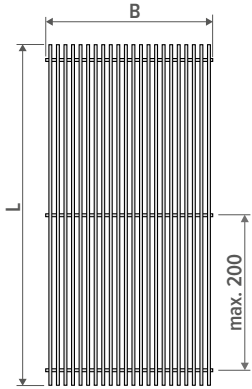
SBR Brass-coloured

DESIGNO RIGID ANODISED ALUMINIUM GRILLES

Rigid anodized aluminium grille, Designo model with reduced slat spacing. Matching colour frame.

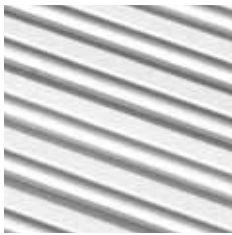
PROPERTIES

- eco-friendly, scratch-resistant powder coating with high UV-resistance
- free air flow: 62.5%
- output correction factor: 0.97

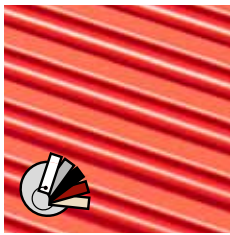


The width of the grille is 4 mm smaller and the length is 2 mm smaller than the width and length of the Mini Canal Pro.

*Dimensional tolerance width grille: +2 mm
(Dimensions in mm)*



DNA Alu. natural



DNC/XXX Alu. coated

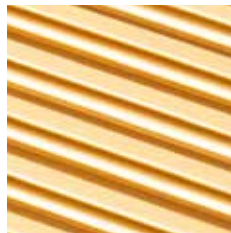
! Our grilles are available in all colours, with the exception of Sand blast grey 001. In case of intensive use (installation in circulation areas, for example in front of sliding windows and doors), wear is evidently inevitable.



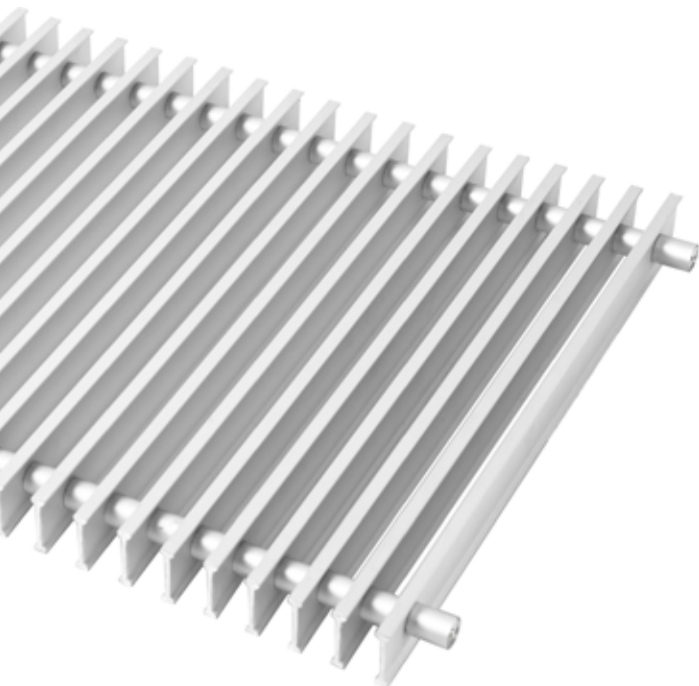
DBL Black



ddb Dark brown



DBR Brass-coloured

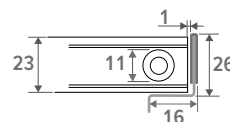
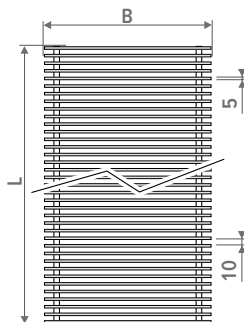


RETRACTABLE ANODISED ALUMINIUM GRILLES

Roll-up anodized aluminium grille with frame in matching colour.

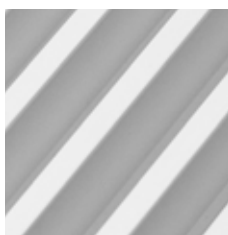
PROPERTIES

- eco-friendly, scratch-resistant powder coating with high UV-resistance
- free air flow: 70%
- no correction factor to apply on the output



The width of the grille is 4 mm smaller and the length is 2 mm smaller than the width and length of the Mini Canal Pro.

Dimensional tolerance width grille: +2 mm
(Dimensions in mm)



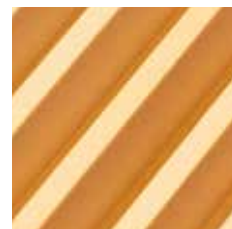
RNA Alu. natural



RBL Black



RDB Dark brown



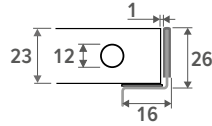
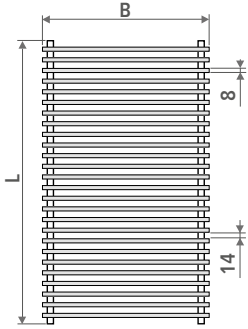
RBR Brass-coloured

RETRACTABLE STAINLESS STEEL GRILLE

Roll-up grille in high grade stainless steel 1.4301. With matching frame in natural anodized aluminium. Maximum length: 6 meter.

PROPERTIES

- eco-friendly, scratch-resistant powder coating with high UV-resistance
- free air flow: 60%
- output correction factor 0.96



Dimensional tolerance width grille: +2 mm
(Dimensions in mm)



RSS Stainless steel

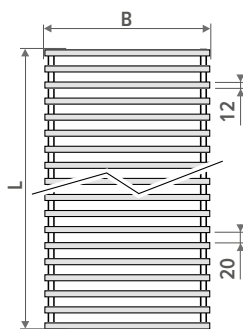


ROLL-UP WOODEN GRILLES

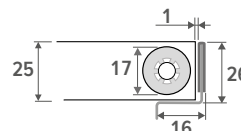
Roll-up natural or varnished grille, with dark brown coloured synthetic spacers. Frame in brown anodized aluminium.

PROPERTIES

- eco-friendly, scratch-resistant powder coating with high UV-resistance
- free air flow: 63%
- output correction factor 0.97



WIDTH GRILLE ≤ 40.8 CM



The width of the grille is 4 mm smaller and the length is 2 mm smaller than the width and length of the Mini Canal Pro.

Dimensional tolerance width grille: +2 mm
(Dimensions in mm)

NATURAL WOODEN ROLL-UP GRILLES



RON Oak natural **RBN** Beech natural **RMN** Merbau natural

VARNISHED WOODEN ROLL-UP GRILLES



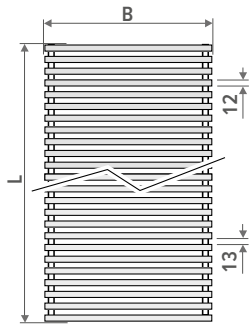
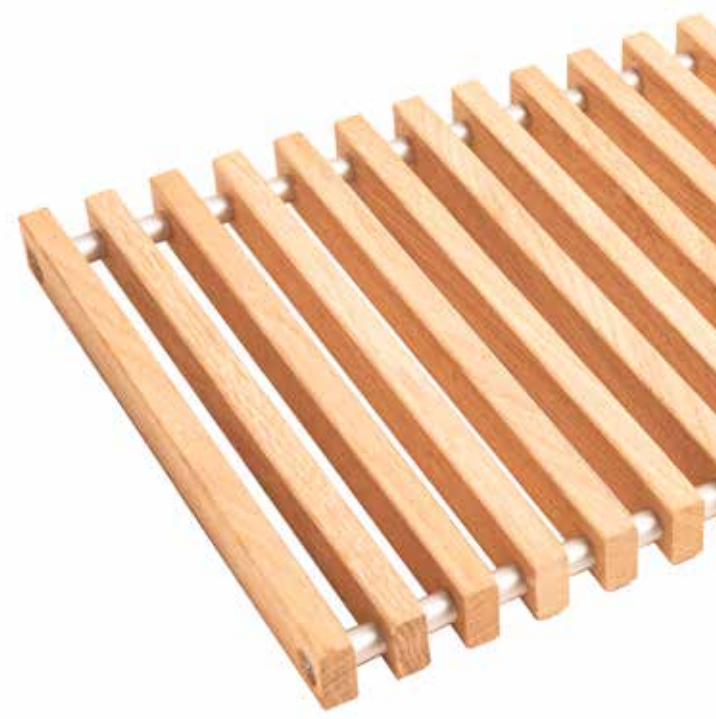
ROV Oak varnished **RBV** Beech varnished **RMV** Merbau varnished

DESIGNO ROLL-UP WOODEN GRILLES

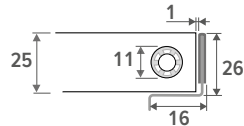
Roll-up natural or varnished grille, Designo model with reduced slat spacing and natural colour anodized aluminium spacers. Frame in natural coloured anodized aluminium.

PROPERTIES

- eco-friendly, scratch-resistant powder coating with high UV-resistance
- free air flow: 52%
- output correction factor: 0.93



BREEDTE ROOSTER ≤ 40.8 CM



The width of the grille is 4 mm smaller and the length is 2 mm smaller than the width and length of the Mini Canal Pro.

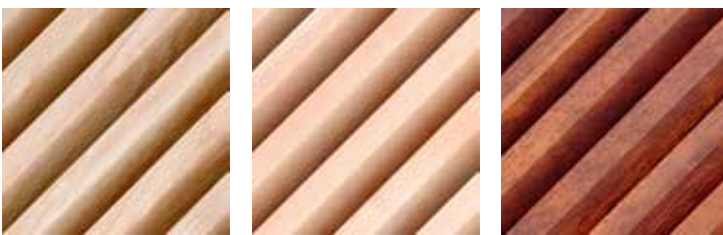
Dimensional tolerance width grille: +2 mm (Dimensions in mm)

DESIGNO NATURAL WOODEN RETRACTABLE GRILLES



DON Oak natural **DBN** Beech natural **DMN** Merbau natural

DESIGNO VARNISHED ROLL-UP WOODEN GRILLES



DOV Oak varnished **DBV** Beech varnished **DMV** Merbau varnished

COVER PLATE

protects the Mini Canal against contamination and damaging during construction works

GRILLE

aluminium and wooden grilles in a variety of colours and materials



Rigid aluminium grilles

Designo rigid aluminium grilles

alu. natural grille

Roll-up aluminium grilles

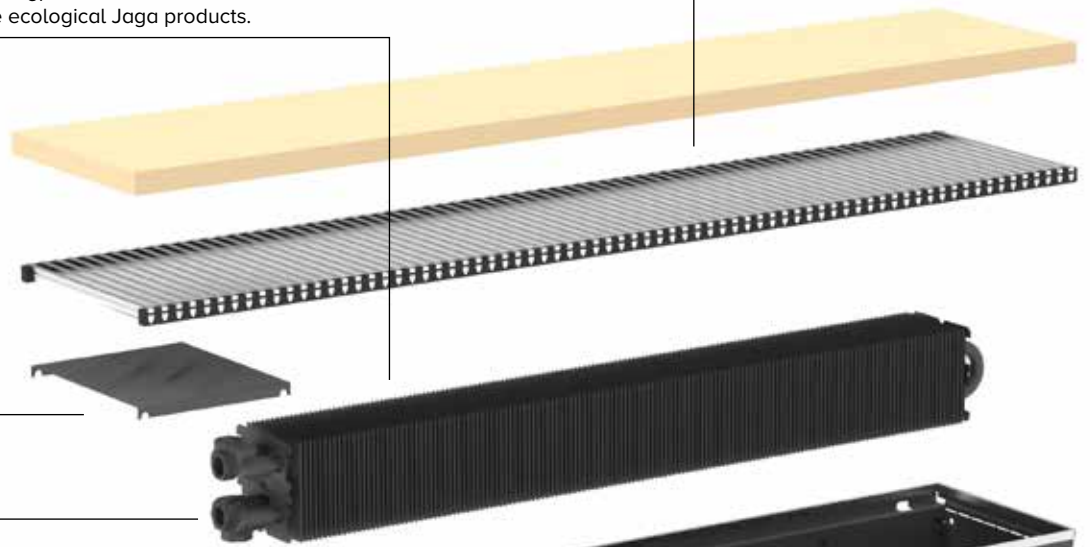
Roll-up stainless steel grille

Roll-up wooden grilles

Designo roll-up wooden grilles

LOW-H₂O HEAT EXCHANGER

The Low-H₂O heat exchanger is the hyper-reactive, aluminium and copper motor of the ecological Jaga products.



METAL COVER PLATE

to protect the connections

AIR VENT

SEALS

for the connection holes, made of black synthetic material

PRE-PERFORATED SYSTEM

for connections provided as standard to enable continuous installation

HYDRONIC & ELECTRICAL CONNECTION

DUCT with stainless steel grille support

from electrolytic galvanized steel plate dark grey lacquered in RAL 7024

OPTIONAL
nozzle(s) for ventilation duct

OPTION

easy height adjustment for uneven floors. Provided with acoustic decoupling.

ORDER CODE MINI CANAL PRO

MIPR HHH LLL BB RRR CCC L h VV

Option: air outlet vent

Height adjustment:

A: Adjustable 0 - 4,5 cm

B: Adjustable 4,5 - 10 cm

Colour grille

Grille

Width

Length

Height

STANDARD DELIVERY

Completely assembled dark-grey floor drain with:

- Low-H₂O heat exchanger, with dirt and dust repellent coating in graphite grey (RAL 7024)
- duct with stainless steel grille support
- air vent(s) 1/8" and drain plug(s) 1/2"
- metal cover plate to protect the connections
- grille
- height adjustment 0 - 4.5 cm (standard), with acoustic decoupling, height adjustment 4.5 - 10 cm (upon request)
- provided as standard to enable continuous installation
- cover plate, protects the Mini Canal against contamination and damaging during construction works

HEIGHT / WIDTH

HEIGHT	WIDTH	14	18	23	30	38
009		✓	✓	✓	✓	✓
012		✓	✓	✓	✓	✓
015		✓	✓	✓	✓	✓
020		-	-	✓	✓	✓

LENGTH

070 cm to 490 cm

GRILLE



COLOUR GRILLE

Our grilles are available in all colours, with the exception of Sand blast grey 001. In case of intensive use (installation in circulation areas, for example in front of sliding windows and doors), wear is evidently inevitable.

HEIGHT ADJUSTMENT



A Adjustable 0 - 4,5 cm

B Adjustable 4,5 - 10 cm

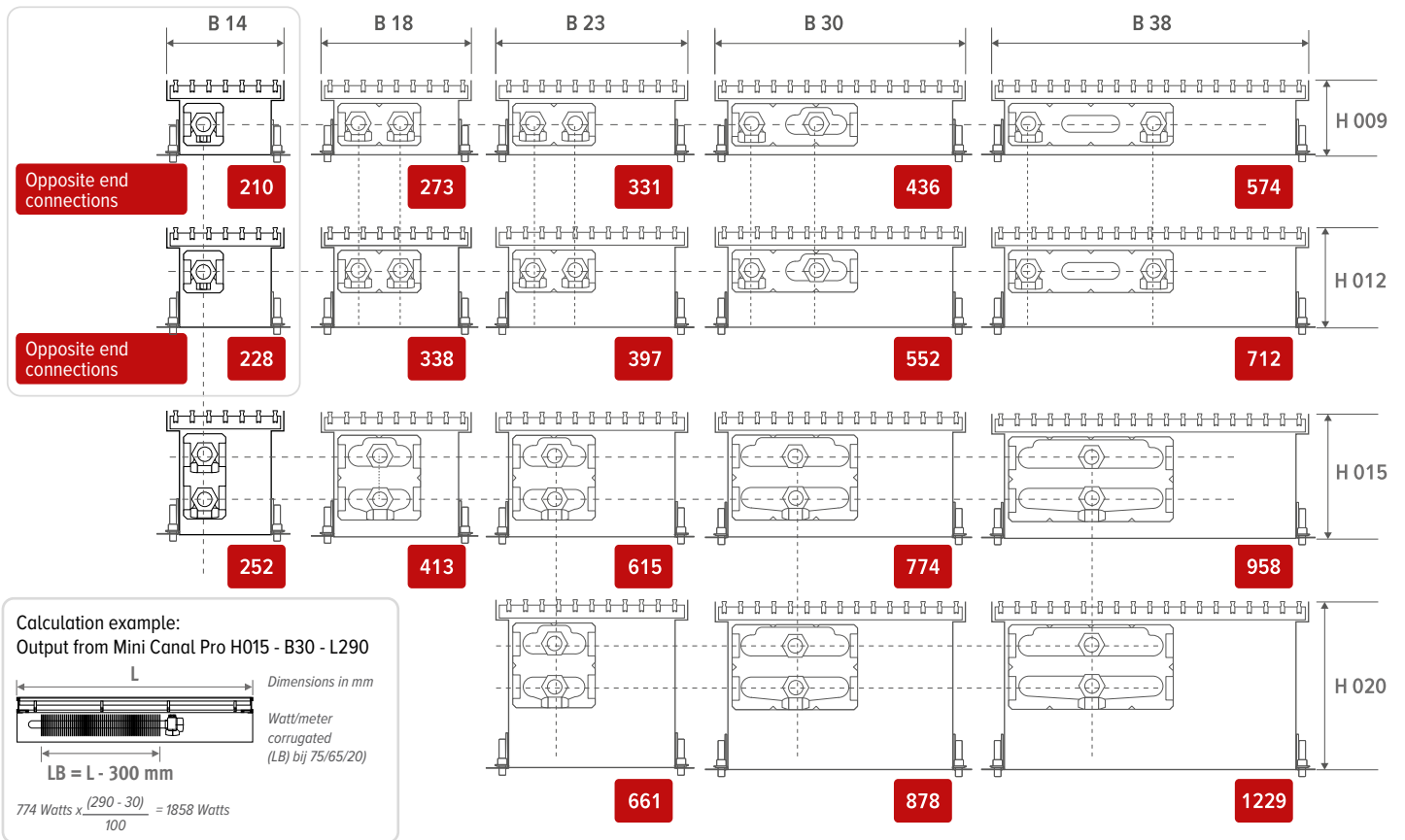
OPTION

Air outlet vent

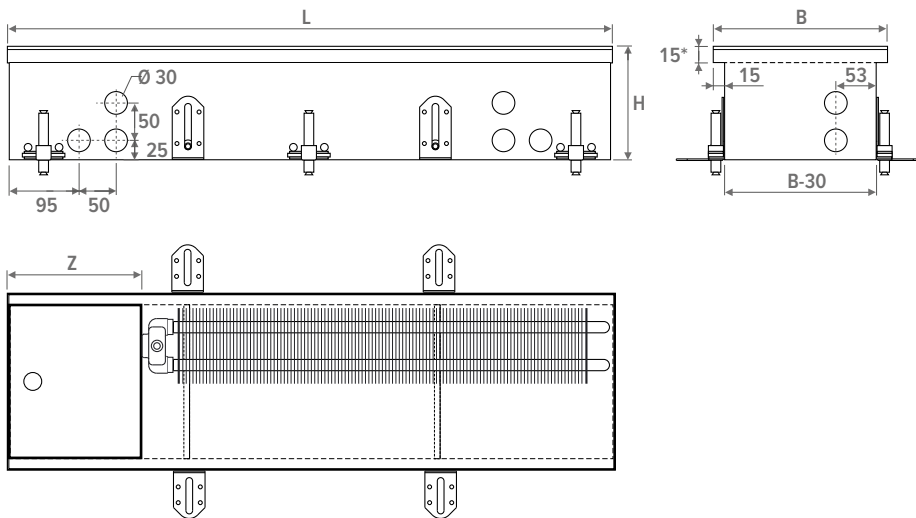


MINI CANAL PRO

PRODUCT SUMMARY (in cm)



DIMENSIONS (in mm)



INSTALLATION

- position builder's level on finished floor level by means of anchoring bars or the optional height adjusters
- feed the pipes through and seal the through holes
- possibly provide additional tube for the remote controlled radiator valve
- test installation for pressure levels
- finish the floor

OPERATING PRINCIPLE

The downward cold air flow associated with glazed façades often causes discomfort. Mini Canal ensures a warm air curtain: the cold air layer from the glass and the cooler return air on the floor are drawn in, heated and mixed with the warmer upper air so a balanced and even comfort temperature is achieved.



MINI CANAL PRO

GRILLE OVERVIEW

CATEGORY 1



SNA
Rigid alu. natural

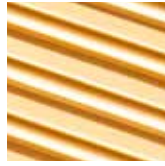


SBR
Rigid alu. Brass-coloured

CATEGORY 2



DNA
Designo
Rigid alu. natural



DBR
Designo rigid alu.
Brass-coloured



DDB
Designo rigid alu.
Dark brown

CATEGORY 3



DMV
Designo
roll-up wooden
Merbau varnished



DON
Designo
roll-up wooden oak
natural



RSS
roll-up stainless
steel



SDB
Rigid alu. Dark
brown



SBL
Rigid alu. Black



DBL
Designo
rigid alu. Black



RMN
roll-up wooden
Merbau natural



RMV
roll-up wooden
Merbau varnished



DOV
Designo
roll-up wooden oak
varnished



RBL
roll-up aluminium.
Black



RBN
Roll-up wooden
beech natural



RBV
Roll-up wooden
beech varnished



RBR
Roll-up aluminium.
Brass-coloured



RDB
roll-up aluminium.
Dark brown



DBV
Designo
roll-up wooden
beech varnished



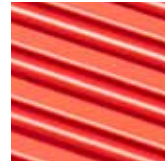
RNA
roll-up aluminium.
natural



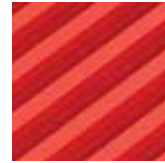
RON
roll-up wooden oak
natural



ROV
roll-up wooden oak
varnished



DNC XXX
Designo
rigid coated alu



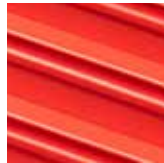
BNC/XXX
Flexible coated alu



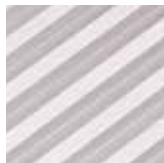
DBN
Designo
roll-up wooden
beech natural



DMN
Designo
roll-up wooden
Merbau natural



SNC XXX
rigid coated alu



BNA
Flexible coated alu

MOUTHPIECE FOR VENTILATION DUCT

Metal mouthpiece



- connection for pretreated air
- height 4 cm x length 9 cm
- made from galvanised steel plate

CODE

MIPR HHH LLL BB XXX L h **V1** 4 x 9 cm

code height adjustment
fill in grille code
Enter width
fill out length
Enter the height.



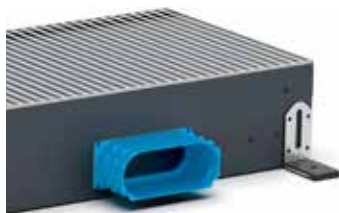
- connection for pretreated air
- supply diameter: Ø8 - Ø10 - Ø12.5
- made from galvanised steel plate

CODE

MIPR 015 LLL BB XXX L h **V2** Ø8 cm
MIPR 015 LLL BB XXX L h **V3** Ø10 cm
MIPR 020 LLL BB XXX L h **V2** Ø8 cm
MIPR 020 LLL BB XXX L h **V3** Ø10 cm
MIPR 020 LLL BB XXX L h **V4** Ø12.5 cm

code height adjustment
fill in grille code
Enter width
fill out length

Synthetic mouthpiece



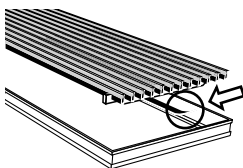
- pre-assembled ex-factory
- height 5.2 cm x length 13.2 cm
- synthetic material
- supplied with snap connections
- 2 O-rings are supplied

CODE

MIPR HHH LLL BB XXX L h **V5** pre-perforated opening
MIPR HHH LLL BB XXX L h **V6** Pre-mountend

code height adjustment
fill in grille code
Enter width
fill out length
Enter the height.

ACOUSTIC STRIP



- for aluminium and wood grilles (not for stainless steel)
- black adhesive rubber strip, thickness 0.5 mm
- prevents impact sounds
- roll 6 metre
- to avoid contact noises. Order the number of rolls required according to the circumference of the frame: $(B + L) \times 2$.

CODE

7690.02







MINI CANAL PRO

Mini Canal Pro H009 & H012
CONNECTION SET

Connection set 3/4" Eurocone



set 271 **Kv max. 0.6**

TWO PIPE	THERMOSTATIC HEAD	
COMC JH2 AB 4...	AB	
COMC JH2 RD 4...	RD	
COMC JH2 RW 4...	RW	
COMC JH2 MA 4...	MA	
COMC JH2 24 4...	24 (24 VDC)	
COMC JH2 23 4...	23 (230VAC)	

fill in sleeve coupling code









Mini Canal Pro H015 & H020
CONNECTION SET

Connection set 3/4" Eurocone



set 272 **Kv max. 0.6**

TWO PIPE	THERMOSTATIC HEAD	
COMC JV2 AB 4...	AB	
COMC JV2 RD 4...	RD	
COMC JV2 RW 4...	RW	
COMC JV2 MA 4...	MA	
COMC JV2 24 4...	24 (24 VDC)	
COMC JV2 23 4...	23 (230VAC)	

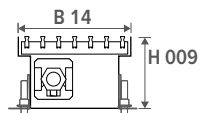
fill in sleeve coupling code



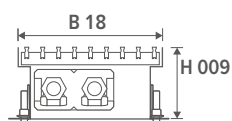
HYDRONIC CONNECTION

Sleeve couplings 3/4" Eurocone

PRECISION METAL TUBE		SYNTHETIC OR RPE/ALU	
CODE	Tube Ø	CODE	Tube Ø
112	12/1	612	12/2
114	14/1	614	14/2
115	15/1	616	16/2
116	16/1	618	18/2
118	18/1	619	16/1.5
		620	20/2



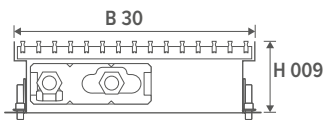
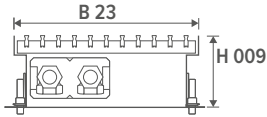
dubbelzijdige aansluiting



MIPR	HEIGHT H cm	LENGTH L cm	WIDTH B cm	HEATING Room temperature 20°C					WEIGHT kg	WATER CONTENT L	ORDER CODE
				35/30 Watts	45/40 Watts	50/45 Watts	55/45 Watts	75/65 Watts			
	009	070	14	10	25	34	39	84	0.11	MIPR 009 070 14 XXX L h	
		080		13	32	43	48	105	0.13	MIPR 009 080 14 XXX L h	
		090		16	38	51	58	126	0.14	MIPR 009 090 14 XXX L h	
		100		18	44	60	68	147	0.16	MIPR 009 100 14 XXX L h	
		110		21	51	69	77	168	0.18	MIPR 009 110 14 XXX L h	
		130		26	63	86	97	210	0.21	MIPR 009 130 14 XXX L h	
		150		31	76	103	116	252	0.24	MIPR 009 150 14 XXX L h	
		170		36	89	120	135	294	0.27	MIPR 009 170 14 XXX L h	
		190		41	101	137	155	336	0.30	MIPR 009 190 14 XXX L h	
		210		47	114	154	174	378	0.34	MIPR 009 210 14 XXX L h	
		230		52	127	171	193	420	0.37	MIPR 009 230 14 XXX L h	
		250		57	139	189	213	462	0.40	MIPR 009 250 14 XXX L h	
		270		62	152	206	232	504	0.43	MIPR 009 270 14 XXX L h	
		290		67	165	223	251	546	0.46	MIPR 009 290 14 XXX L h	
		310		72	177	240	271	588	0.50	MIPR 009 310 14 XXX L h	
		330		78	190	257	290	630	0.53	MIPR 009 330 14 XXX L h	
		370		88	215	291	329	714	0.59	MIPR 009 370 14 XXX L h	
		410		98	241	326	368	798	0.66	MIPR 009 410 14 XXX L h	
		450		109	266	360	406	882	0.72	MIPR 009 450 14 XXX L h	
		490		119	291	394	445	966	0.78	MIPR 009 490 14 XXX L h	
MIPR	009	070	18	13	33	44	50	109	0.22	MIPR 009 070 18 XXX L h	
		080		17	41	56	63	137	0.26	MIPR 009 080 18 XXX L h	
		090		20	49	67	76	164	0.29	MIPR 009 090 18 XXX L h	
		100		24	58	78	88	191	0.32	MIPR 009 100 18 XXX L h	
		110		27	66	89	100	218	0.35	MIPR 009 110 18 XXX L h	
		130		34	82	111	126	273	0.42	MIPR 009 130 18 XXX L h	
		150		40	99	134	151	328	0.48	MIPR 009 150 18 XXX L h	
		170		47	115	156	176	382	0.54	MIPR 009 170 18 XXX L h	
		190		54	132	178	201	437	0.61	MIPR 009 190 18 XXX L h	
		210		60	148	200	226	491	0.67	MIPR 009 210 18 XXX L h	
		230		67	165	223	251	546	0.74	MIPR 009 230 18 XXX L h	
		250		74	181	245	277	601	0.80	MIPR 009 250 18 XXX L h	
		270		81	197	267	302	655	0.86	MIPR 009 270 18 XXX L h	
		290		87	214	290	327	710	0.93	MIPR 009 290 18 XXX L h	
		310		94	230	312	352	764	0.99	MIPR 009 310 18 XXX L h	
		330		101	247	334	377	819	1.06	MIPR 009 330 18 XXX L h	
		370		114	280	379	427	928	1.18	MIPR 009 370 18 XXX L h	
		410		128	313	423	478	1037	1.31	MIPR 009 410 18 XXX L h	
		450		141	346	468	528	1147	1.44	MIPR 009 450 18 XXX L h	
		490		155	379	513	578	1256	1.57	MIPR 009 490 18 XXX L h	

* measured in accordance with EN442

fill in grille code |
code height adjustment:
A: Adjustable 0 - 4,5 cm
B: Adjustable 4,5 - 10 cm



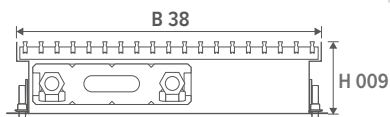
HEIGHT H cm	LENGTH L cm	WIDTH B cm	HEATING Room temperature 20°C					WEIGHT kg	WATER CONTENT L	ORDER CODE
			35/30 Watts	45/40 Watts	50/45 Watts	55/45 Watts	75/65 Watts			
MIPR 009	070	23	16	40	54	61	132	0.22	MIPR 009 070 23 XXX L h	
		080	20	50	68	76	166	0.26	MIPR 009 080 23 XXX L h	
		090	24	60	81	92	199	0.29	MIPR 009 090 23 XXX L h	
		100	29	70	95	107	232	0.32	MIPR 009 100 23 XXX L h	
		110	33	80	108	122	265	0.35	MIPR 009 110 23 XXX L h	
		130	41	100	135	152	331	0.42	MIPR 009 130 23 XXX L h	
		150	49	120	162	183	397	0.48	MIPR 009 150 23 XXX L h	
		170	57	140	189	213	463	0.54	MIPR 009 170 23 XXX L h	
		190	65	160	216	244	530	0.61	MIPR 009 190 23 XXX L h	
		210	73	180	243	275	596	0.67	MIPR 009 210 23 XXX L h	
		230	81	200	270	305	662	0.74	MIPR 009 230 23 XXX L h	
		250	90	220	297	335	728	0.80	MIPR 009 250 23 XXX L h	
		270	98	239	324	366	794	0.86	MIPR 009 270 23 XXX L h	
		290	106	260	352	397	861	0.93	MIPR 009 290 23 XXX L h	
		310	114	280	378	427	927	0.99	MIPR 009 310 23 XXX L h	
		330	122	299	405	457	993	1.06	MIPR 009 330 23 XXX L h	
		370	138	339	459	518	1125	1.18	MIPR 009 370 23 XXX L h	
410	155	379	514	579	1258	1.31	MIPR 009 410 23 XXX L h			
450	171	419	567	640	1390	1.44	MIPR 009 450 23 XXX L h			
490	187	459	622	701	1523	1.57	MIPR 009 490 23 XXX L h			
MIPR 009	070	30	21	52	71	80	174	0.34	MIPR 009 070 30 XXX L h	
		080	27	66	89	100	218	0.38	MIPR 009 080 30 XXX L h	
		090	32	79	107	121	262	0.43	MIPR 009 090 30 XXX L h	
		100	38	92	125	140	305	0.48	MIPR 009 100 30 XXX L h	
		110	43	105	142	161	349	0.53	MIPR 009 110 30 XXX L h	
		130	54	131	178	201	436	0.62	MIPR 009 130 30 XXX L h	
		150	64	158	214	241	523	0.72	MIPR 009 150 30 XXX L h	
		170	75	184	249	281	610	0.82	MIPR 009 170 30 XXX L h	
		190	86	210	285	321	698	0.91	MIPR 009 190 30 XXX L h	
		210	97	237	320	362	785	1.01	MIPR 009 210 30 XXX L h	
		230	107	263	356	402	872	1.10	MIPR 009 230 30 XXX L h	
		250	118	289	392	442	959	1.20	MIPR 009 250 30 XXX L h	
		270	129	315	427	482	1046	1.30	MIPR 009 270 30 XXX L h	
		290	140	342	463	522	1134	1.39	MIPR 009 290 30 XXX L h	
		310	150	368	498	562	1221	1.49	MIPR 009 310 30 XXX L h	
		330	161	394	534	602	1308	1.58	MIPR 009 330 30 XXX L h	
		370	182	447	605	683	1482	1.78	MIPR 009 370 30 XXX L h	
410	204	500	676	763	1657	1.97	MIPR 009 410 30 XXX L h			
450	225	552	748	843	1831	2.16	MIPR 009 450 30 XXX L h			
490	247	605	819	924	2006	2.35	MIPR 009 490 30 XXX L h			

* measured in accordance with EN442

fill in grille code |
code height adjustment:
A: Adjustable 0 - 4,5 cm
B: Adjustable 4,5 - 10 cm

MINI CANAL PRO

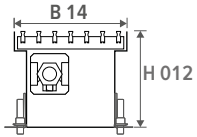
HEIGHT 009



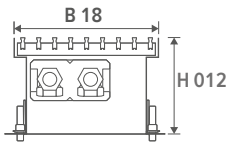
HEIGHT H cm	LENGTH L cm	WIDTH B cm	HEATING Room temperature 20°C					WEIGHT kg	WATER CONTENT L	ORDER CODE
			35/30 Watts	45/40 Watts	50/45 Watts	55/45 Watts	75/65 Watts			
MIPR 009	070	38	28	69	94	106	230	0.44	MIPR 009 070 38 XXX L h	
	080		35	87	117	132	287	0.50	MIPR 009 080 38 XXX L h	
	090		42	104	140	158	344	0.57	MIPR 009 090 38 XXX L h	
	100		49	121	164	185	402	0.63	MIPR 009 100 38 XXX L h	
	110		57	138	187	211	459	0.69	MIPR 009 110 38 XXX L h	
	130		71	173	234	264	574	0.82	MIPR 009 130 38 XXX L h	
	150		85	208	281	317	689	0.95	MIPR 009 150 38 XXX L h	
	170		99	242	328	370	804	1.07	MIPR 009 170 38 XXX L h	
	190		113	277	375	423	918	1.20	MIPR 009 190 38 XXX L h	
	210		127	311	422	476	1033	1.32	MIPR 009 210 38 XXX L h	
	230		141	346	469	529	1148	1.45	MIPR 009 230 38 XXX L h	
	250		155	381	516	582	1263	1.58	MIPR 009 250 38 XXX L h	
	270		170	415	563	635	1378	1.70	MIPR 009 270 38 XXX L h	
	290		184	450	609	687	1492	1.83	MIPR 009 290 38 XXX L h	
	310		198	485	656	740	1607	1.95	MIPR 009 310 38 XXX L h	
	330		212	519	703	793	1722	2.08	MIPR 009 330 38 XXX L h	
	370		240	589	797	899	1952	2.33	MIPR 009 370 38 XXX L h	
	410		268	658	890	1005	2181	2.58	MIPR 009 410 38 XXX L h	
	450		297	727	984	1110	2411	2.84	MIPR 009 450 38 XXX L h	
	490		325	796	1078	1216	2640	3.09	MIPR 009 490 38 XXX L h	

* measured in accordance with EN442

fill in grille code |
code height adjustment:
A: Adjustable 0 - 4,5 cm
B: Adjustable 4,5 - 10 cm



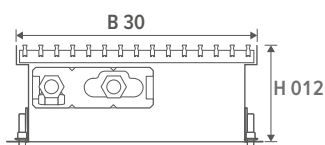
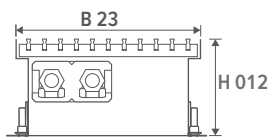
dubbelzijdige aansluiting



MIPR	HEIGHT H cm	LENGTH L cm	WIDTH B cm	HEATING Room temperature 20°C					WEIGHT kg	WATER CONTENT L	ORDER CODE
				35/30 Watts	45/40 Watts	50/45 Watts	55/45 Watts	75/65 Watts			
MIPR	012	070	14	11	27	37	42	91	0.11	MIPR 012 070 14 XXX L h	
			080	14	34	47	53	114	0.13	MIPR 012 080 14 XXX L h	
			090	17	41	56	63	137	0.14	MIPR 012 090 14 XXX L h	
			100	20	48	65	74	160	0.16	MIPR 012 100 14 XXX L h	
			110	22	55	74	84	182	0.18	MIPR 012 110 14 XXX L h	
			130	28	69	93	105	228	0.21	MIPR 012 130 14 XXX L h	
			150	34	83	112	126	274	0.24	MIPR 012 150 14 XXX L h	
			170	39	96	130	147	319	0.27	MIPR 012 170 14 XXX L h	
			190	45	110	149	168	365	0.30	MIPR 012 190 14 XXX L h	
			210	50	124	167	189	410	0.34	MIPR 012 210 14 XXX L h	
			230	56	137	186	210	456	0.37	MIPR 012 230 14 XXX L h	
			250	62	151	205	231	502	0.40	MIPR 012 250 14 XXX L h	
			270	67	165	223	252	547	0.43	MIPR 012 270 14 XXX L h	
			290	73	179	242	273	593	0.46	MIPR 012 290 14 XXX L h	
			310	79	192	260	294	638	0.50	MIPR 012 310 14 XXX L h	
			330	84	206	279	315	684	0.53	MIPR 012 330 14 XXX L h	
			370	95	234	316	357	775	0.59	MIPR 012 370 14 XXX L h	
410	107	261	354	399	866	0.66	MIPR 012 410 14 XXX L h				
450	118	289	391	441	958	0.72	MIPR 012 450 14 XXX L h				
490	129	316	428	483	1049	0.78	MIPR 012 490 14 XXX L h				
MIPR	012	070	18	17	41	55	62	135	0.22	MIPR 012 070 18 XXX L h	
			080	21	51	69	78	169	0.26	MIPR 012 080 18 XXX L h	
			090	25	61	83	93	203	0.29	MIPR 012 090 18 XXX L h	
			100	29	71	97	109	237	0.32	MIPR 012 100 18 XXX L h	
			110	33	81	110	124	270	0.35	MIPR 012 110 18 XXX L h	
			130	42	102	138	156	338	0.42	MIPR 012 130 18 XXX L h	
			150	50	122	166	187	406	0.48	MIPR 012 150 18 XXX L h	
			170	58	143	193	218	473	0.54	MIPR 012 170 18 XXX L h	
			190	67	163	221	249	541	0.61	MIPR 012 190 18 XXX L h	
			210	75	183	248	280	608	0.67	MIPR 012 210 18 XXX L h	
			230	83	204	276	311	676	0.74	MIPR 012 230 18 XXX L h	
			250	92	224	304	343	744	0.80	MIPR 012 250 18 XXX L h	
			270	100	245	331	374	811	0.86	MIPR 012 270 18 XXX L h	
			290	108	265	359	405	879	0.93	MIPR 012 290 18 XXX L h	
			310	116	285	386	436	946	0.99	MIPR 012 310 18 XXX L h	
			330	125	306	414	467	1014	1.06	MIPR 012 330 18 XXX L h	
			370	141	346	469	529	1149	1.18	MIPR 012 370 18 XXX L h	
410	158	387	524	591	1284	1.31	MIPR 012 410 18 XXX L h				
450	175	428	580	654	1420	1.44	MIPR 012 450 18 XXX L h				
490	191	469	635	716	1555	1.57	MIPR 012 490 18 XXX L h				

* measured in accordance with EN442

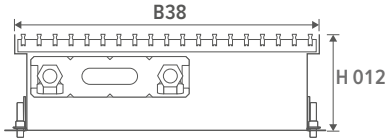
fill in grille code |
code height adjustment:
A: Adjustable 0 - 4,5 cm
B: Adjustable 4,5 - 10 cm



MIPR	HEIGHT H cm	LENGTH L cm	WIDTH B cm	HEATING Room temperature 20°C					WEIGHT kg	WATER CONTENT L	ORDER CODE
				35/30 Watts	45/40 Watts	50/45 Watts	55/45 Watts	75/65 Watts			
MIPR	012	070	23	20	48	65	73	159	0.22	MIPR 012 070 23 XXX L h	
			080	24	60	81	92	199	0.26	MIPR 012 080 23 XXX L h	
			090	29	72	97	110	238	0.29	MIPR 012 090 23 XXX L h	
			100	34	84	113	128	278	0.32	MIPR 012 100 23 XXX L h	
			110	39	96	130	146	318	0.35	MIPR 012 110 23 XXX L h	
			130	49	120	162	183	397	0.42	MIPR 012 130 23 XXX L h	
			150	59	144	194	219	476	0.48	MIPR 012 150 23 XXX L h	
			170	68	168	227	256	556	0.54	MIPR 012 170 23 XXX L h	
			190	78	191	259	292	635	0.61	MIPR 012 190 23 XXX L h	
			210	88	216	292	329	715	0.67	MIPR 012 210 23 XXX L h	
			230	98	239	324	366	794	0.74	MIPR 012 230 23 XXX L h	
			250	107	263	356	402	873	0.80	MIPR 012 250 23 XXX L h	
			270	117	287	389	439	953	0.86	MIPR 012 270 23 XXX L h	
			290	127	311	421	475	1032	0.93	MIPR 012 290 23 XXX L h	
			310	137	335	454	512	1112	0.99	MIPR 012 310 23 XXX L h	
			330	147	359	486	549	1191	1.06	MIPR 012 330 23 XXX L h	
			370	166	407	551	622	1350	1.18	MIPR 012 370 23 XXX L h	
			410	186	455	616	695	1509	1.31	MIPR 012 410 23 XXX L h	
			450	205	503	681	768	1667	1.44	MIPR 012 450 23 XXX L h	
490	225	551	745	841	1826	1.57	MIPR 012 490 23 XXX L h				
MIPR	012	070	30	27	67	90	102	221	0.34	MIPR 012 070 30 XXX L h	
			080	34	83	113	127	276	0.38	MIPR 012 080 30 XXX L h	
			090	41	100	135	152	331	0.43	MIPR 012 090 30 XXX L h	
			100	48	116	158	178	386	0.48	MIPR 012 100 30 XXX L h	
			110	54	133	180	204	442	0.53	MIPR 012 110 30 XXX L h	
			130	68	166	225	254	552	0.62	MIPR 012 130 30 XXX L h	
			150	81	200	270	305	662	0.72	MIPR 012 150 30 XXX L h	
			170	95	233	316	356	773	0.82	MIPR 012 170 30 XXX L h	
			190	109	266	360	407	883	0.91	MIPR 012 190 30 XXX L h	
			210	122	300	406	458	994	1.01	MIPR 012 210 30 XXX L h	
			230	136	333	451	508	1104	1.10	MIPR 012 230 30 XXX L h	
			250	149	366	496	559	1214	1.20	MIPR 012 250 30 XXX L h	
			270	163	400	541	610	1325	1.30	MIPR 012 270 30 XXX L h	
			290	177	433	586	661	1435	1.39	MIPR 012 290 30 XXX L h	
			310	190	466	631	712	1546	1.49	MIPR 012 310 30 XXX L h	
			330	204	499	676	763	1656	1.58	MIPR 012 330 30 XXX L h	
			370	231	566	766	865	1877	1.78	MIPR 012 370 30 XXX L h	
			410	258	633	857	966	2098	1.97	MIPR 012 410 30 XXX L h	
			450	285	699	946	1068	2318	2.16	MIPR 012 450 30 XXX L h	
490	313	766	1037	1169	2539	2.35	MIPR 012 490 30 XXX L h				

* measured in accordance with EN442

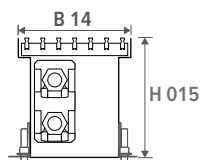
fill in grille code |
code height adjustment:
A: Adjustable 0 - 4,5 cm
B: Adjustable 4,5 - 10 cm



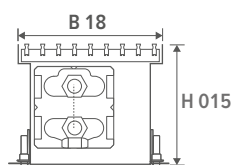
			HEATING Room temperature 20°C							
HEIGHT	LENGTH	WIDTH	35/30	45/40	50/45	55/45	75/65	WEIGHT	WATER CONTENT	ORDER CODE
H	L	B	Watts	Watts	Watts	Watts	Watts	kg	L	
cm	cm	cm								
MIPR	012	070	38	35	86	116	131	285	0.44	MIPR 012 070 38 XXX L h
		080		44	107	145	164	356	0.50	MIPR 012 080 38 XXX L h
		090		53	129	174	197	427	0.57	MIPR 012 090 38 XXX L h
		100		61	150	203	229	498	0.63	MIPR 012 100 38 XXX L h
		110		70	172	233	263	570	0.69	MIPR 012 110 38 XXX L h
		130		88	215	291	328	712	0.82	MIPR 012 130 38 XXX L h
		150		105	257	349	393	854	0.95	MIPR 012 150 38 XXX L h
		170		123	301	407	459	997	1.07	MIPR 012 170 38 XXX L h
		190		140	343	465	525	1139	1.20	MIPR 012 190 38 XXX L h
		210		158	387	523	590	1282	1.32	MIPR 012 210 38 XXX L h
		230		175	429	581	656	1424	1.45	MIPR 012 230 38 XXX L h
		250		193	472	639	721	1566	1.58	MIPR 012 250 38 XXX L h
		270		210	515	698	787	1709	1.70	MIPR 012 270 38 XXX L h
		290		228	558	756	853	1851	1.83	MIPR 012 290 38 XXX L h
		310		245	601	814	918	1994	1.95	MIPR 012 310 38 XXX L h
		330		263	644	872	984	2136	2.08	MIPR 012 330 38 XXX L h
		370		298	730	988	1115	2421	2.33	MIPR 012 370 38 XXX L h
		410		333	816	1105	1246	2706	2.58	MIPR 012 410 38 XXX L h
		450		368	902	1221	1377	2990	2.84	MIPR 012 450 38 XXX L h
		490		403	987	1337	1508	3275	3.09	MIPR 012 490 38 XXX L h

* measured in accordance with EN442

fill in grille code |
code height adjustment:
A: Adjustable 0 - 4,5 cm
B: Adjustable 4,5 - 10 cm



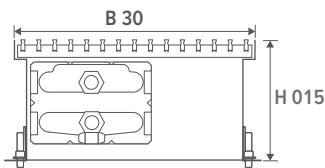
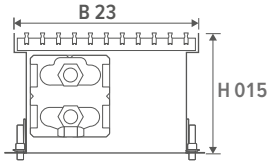
dubbelzijdige aansluiting



MIPR	HEIGHT H cm	LENGTH L cm	WIDTH B cm	HEATING Room temperature 20°C					WEIGHT kg	WATER CONTENT L	ORDER CODE
				35/30 Watts	45/40 Watts	50/45 Watts	55/45 Watts	75/65 Watts			
	015	070	14	12	30	41	47	101	0.22	MIPR 015 070 14 XXX L h	
		080		16	38	51	58	126	0.26	MIPR 015 080 14 XXX L h	
		090		19	46	62	70	151	0.29	MIPR 015 090 14 XXX L h	
		100		22	53	72	81	176	0.32	MIPR 015 100 14 XXX L h	
		110		25	61	82	93	202	0.35	MIPR 015 110 14 XXX L h	
		130		31	76	103	116	252	0.42	MIPR 015 130 14 XXX L h	
		150		37	91	123	139	302	0.48	MIPR 015 150 14 XXX L h	
		170		43	106	144	163	353	0.54	MIPR 015 170 14 XXX L h	
		190		50	122	165	186	403	0.61	MIPR 015 190 14 XXX L h	
		210		56	137	185	209	454	0.67	MIPR 015 210 14 XXX L h	
		230		62	152	206	232	504	0.74	MIPR 015 230 14 XXX L h	
		250		68	167	226	255	554	0.80	MIPR 015 250 14 XXX L h	
		270		74	182	247	279	605	0.86	MIPR 015 270 14 XXX L h	
		290		81	197	267	302	655	0.93	MIPR 015 290 14 XXX L h	
		310		87	213	288	325	706	0.99	MIPR 015 310 14 XXX L h	
		330		93	228	309	348	756	1.06	MIPR 015 330 14 XXX L h	
		370		105	258	350	395	857	1.18	MIPR 015 370 14 XXX L h	
		410		118	289	391	441	958	1.31	MIPR 015 410 14 XXX L h	
		450		130	319	432	487	1058	1.44	MIPR 015 450 14 XXX L h	
		490		143	349	473	534	1159	1.57	MIPR 015 490 14 XXX L h	
MIPR	015	070	18	20	50	67	76	165	0.46	MIPR 015 070 18 XXX L h	
		080		25	62	85	95	207	0.52	MIPR 015 080 18 XXX L h	
		090		31	75	101	114	248	0.59	MIPR 015 090 18 XXX L h	
		100		36	87	118	133	289	0.65	MIPR 015 100 18 XXX L h	
		110		41	99	135	152	330	0.72	MIPR 015 110 18 XXX L h	
		130		51	125	169	190	413	0.85	MIPR 015 130 18 XXX L h	
		150		61	150	202	228	496	0.98	MIPR 015 150 18 XXX L h	
		170		71	174	236	266	578	1.11	MIPR 015 170 18 XXX L h	
		190		81	199	270	304	661	1.24	MIPR 015 190 18 XXX L h	
		210		91	224	303	342	743	1.37	MIPR 015 210 18 XXX L h	
		230		102	249	337	380	826	1.50	MIPR 015 230 18 XXX L h	
		250		112	274	371	419	909	1.63	MIPR 015 250 18 XXX L h	
		270		122	299	405	456	991	1.76	MIPR 015 270 18 XXX L h	
		290		132	324	438	495	1074	1.89	MIPR 015 290 18 XXX L h	
		310		142	349	472	532	1156	2.02	MIPR 015 310 18 XXX L h	
		330		153	374	506	571	1239	2.15	MIPR 015 330 18 XXX L h	
		370		173	423	573	647	1404	2.41	MIPR 015 370 18 XXX L h	
		410		193	473	641	723	1569	2.67	MIPR 015 410 18 XXX L h	
		450		214	523	708	799	1735	2.93	MIPR 015 450 18 XXX L h	
		490		234	573	776	875	1900	3.19	MIPR 015 490 18 XXX L h	

* measured in accordance with EN442

fill in grille code |
code height adjustment:
A: Adjustable 0 - 4,5 cm
B: Adjustable 4,5 - 10 cm



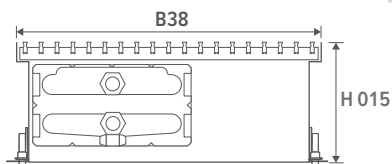
MIPR	HEIGHT H cm	LENGTH L cm	WIDTH B cm	HEATING Room temperature 20°C					WEIGHT kg	WATER CONTENT L	ORDER CODE
				35/30 Watts	45/40 Watts	50/45 Watts	55/45 Watts	75/65 Watts			
MIPR	015	070	23	30	74	100	113	246	0.46		MIPR 015 070 23 XXX L h
			080	38	93	126	142	308	0.52		MIPR 015 080 23 XXX L h
			090	45	111	151	170	369	0.59		MIPR 015 090 23 XXX L h
			100	53	130	176	199	431	0.65		MIPR 015 100 23 XXX L h
			110	61	148	201	227	492	0.72		MIPR 015 110 23 XXX L h
			130	76	185	251	283	615	0.85		MIPR 015 130 23 XXX L h
			150	91	223	301	340	738	0.98		MIPR 015 150 23 XXX L h
			170	106	260	352	397	861	1.11		MIPR 015 170 23 XXX L h
			190	121	297	402	453	984	1.24		MIPR 015 190 23 XXX L h
			210	136	334	452	510	1107	1.37		MIPR 015 210 23 XXX L h
			230	151	371	502	567	1230	1.50		MIPR 015 230 23 XXX L h
			250	167	408	552	623	1353	1.63		MIPR 015 250 23 XXX L h
			270	182	445	603	680	1476	1.76		MIPR 015 270 23 XXX L h
			290	197	482	653	736	1599	1.89		MIPR 015 290 23 XXX L h
			310	212	519	703	793	1722	2.02		MIPR 015 310 23 XXX L h
			330	227	556	753	850	1845	2.15		MIPR 015 330 23 XXX L h
			370	257	630	854	963	2091	2.41		MIPR 015 370 23 XXX L h
410	288	705	954	1076	2337	2.67		MIPR 015 410 23 XXX L h			
450	318	779	1055	1190	2583	2.93		MIPR 015 450 23 XXX L h			
490	348	853	1155	1303	2829	3.19		MIPR 015 490 23 XXX L h			
MIPR	015	070	30	38	93	127	143	310	0.69		MIPR 015 070 30 XXX L h
			080	48	117	158	178	387	0.78		MIPR 015 080 30 XXX L h
			090	57	140	189	214	464	0.88		MIPR 015 090 30 XXX L h
			100	67	163	221	250	542	0.98		MIPR 015 100 30 XXX L h
			110	76	187	253	285	619	1.08		MIPR 015 110 30 XXX L h
			130	95	233	316	356	774	1.27		MIPR 015 130 30 XXX L h
			150	114	280	379	428	929	1.47		MIPR 015 150 30 XXX L h
			170	133	327	443	499	1084	1.67		MIPR 015 170 30 XXX L h
			190	152	373	505	570	1238	1.86		MIPR 015 190 30 XXX L h
			210	171	420	569	642	1393	2.06		MIPR 015 210 30 XXX L h
			230	191	467	632	713	1548	2.25		MIPR 015 230 30 XXX L h
			250	210	513	695	784	1703	2.45		MIPR 015 250 30 XXX L h
			270	229	560	759	856	1858	2.65		MIPR 015 270 30 XXX L h
			290	248	607	821	927	2012	2.84		MIPR 015 290 30 XXX L h
			310	267	653	885	998	2167	3.04		MIPR 015 310 30 XXX L h
			330	286	700	948	1069	2322	3.23		MIPR 015 330 30 XXX L h
			370	324	794	1075	1212	2632	3.63		MIPR 015 370 30 XXX L h
410	362	887	1201	1355	2941	4.02		MIPR 015 410 30 XXX L h			
450	400	980	1327	1497	3251	4.41		MIPR 015 450 30 XXX L h			
490	438	1073	1453	1640	3560	4.80		MIPR 015 490 30 XXX L h			

* measured in accordance with EN442

fill in grille code |
code height adjustment:
A: Adjustable 0 - 4,5 cm
B: Adjustable 4,5 - 10 cm

MINI CANAL PRO

HEIGHT 015



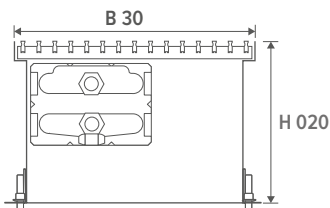
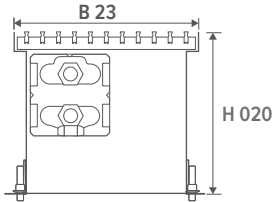
HEIGHT H cm	LENGTH L cm	WIDTH B cm	HEATING Room temperature 20°C					WEIGHT kg	WATER CONTENT L	ORDER CODE
			35/30 Watts	45/40 Watts	50/45 Watts	55/45 Watts	75/65 Watts			
MIPR 015	070	38	47	115	156	176	383	0.92	MIPR 015 070 38 XXX L h	
	080		59	144	196	221	479	1.06	MIPR 015 080 38 XXX L h	
	090		71	173	235	265	575	1.19	MIPR 015 090 38 XXX L h	
	100		83	202	274	309	671	1.32	MIPR 015 100 38 XXX L h	
	110		94	231	313	353	766	1.45	MIPR 015 110 38 XXX L h	
	130		118	289	391	441	958	1.72	MIPR 015 130 38 XXX L h	
	150		142	347	469	530	1150	1.98	MIPR 015 150 38 XXX L h	
	170		165	404	547	618	1341	2.24	MIPR 015 170 38 XXX L h	
	190		189	462	626	706	1533	2.51	MIPR 015 190 38 XXX L h	
	210		212	520	704	794	1724	2.77	MIPR 015 210 38 XXX L h	
	230		236	578	782	882	1916	3.04	MIPR 015 230 38 XXX L h	
	250		259	636	861	971	2108	3.30	MIPR 015 250 38 XXX L h	
	270		283	693	939	1059	2299	3.56	MIPR 015 270 38 XXX L h	
	290		307	751	1017	1147	2491	3.83	MIPR 015 290 38 XXX L h	
	310		330	809	1095	1235	2682	4.09	MIPR 015 310 38 XXX L h	
	330		354	867	1173	1324	2874	4.36	MIPR 015 330 38 XXX L h	
	370		401	982	1330	1500	3257	4.88	MIPR 015 370 38 XXX L h	
	410		448	1098	1486	1676	3640	5.41	MIPR 015 410 38 XXX L h	
	450		495	1213	1643	1853	4024	5.94	MIPR 015 450 38 XXX L h	
	490		542	1329	1799	2030	4407	6.47	MIPR 015 490 38 XXX L h	

* measured in accordance with EN442

fill in grille code
code height adjustment:
A: Adjustable 0 - 4,5 cm
B: Adjustable 4,5 - 10 cm

MINI CANAL PRO

HEIGHT 020



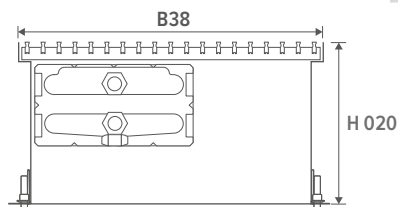
MIPR	HEIGHT H cm	LENGTH L cm	WIDTH B cm	HEATING Room temperature 20°C					WEIGHT kg	WATER CONTENT L	ORDER CODE
				35/30 Watts	45/40 Watts	50/45 Watts	55/45 Watts	75/65 Watts			
MIPR	020	070	23	32	80	108	122	264	0.46		MIPR 020 070 23 XXX L h
			080	41	100	135	152	331	0.52		MIPR 020 080 23 XXX L h
			090	49	120	162	183	397	0.59		MIPR 020 090 23 XXX L h
			100	57	140	189	213	463	0.65		MIPR 020 100 23 XXX L h
			110	65	159	216	244	529	0.72		MIPR 020 110 23 XXX L h
			130	81	199	270	304	661	0.85		MIPR 020 130 23 XXX L h
			150	98	239	324	365	793	0.98		MIPR 020 150 23 XXX L h
			170	114	279	378	426	925	1.11		MIPR 020 170 23 XXX L h
			190	130	319	432	487	1058	1.24		MIPR 020 190 23 XXX L h
			210	146	359	486	548	1190	1.37		MIPR 020 210 23 XXX L h
			230	163	399	540	609	1322	1.50		MIPR 020 230 23 XXX L h
			250	179	438	594	670	1454	1.63		MIPR 020 250 23 XXX L h
			270	195	478	647	730	1586	1.76		MIPR 020 270 23 XXX L h
			290	212	518	702	792	1719	1.89		MIPR 020 290 23 XXX L h
			310	228	558	756	853	1851	2.02		MIPR 020 310 23 XXX L h
			330	244	598	810	913	1983	2.15		MIPR 020 330 23 XXX L h
			370	277	677	917	1035	2247	2.41		MIPR 020 370 23 XXX L h
410	309	757	1026	1157	2512	2.67		MIPR 020 410 23 XXX L h			
450	342	837	1133	1279	2776	2.93		MIPR 020 450 23 XXX L h			
490	374	917	1241	1401	3041	3.19		MIPR 020 490 23 XXX L h			
MIPR	020	070	30	43	106	143	162	351	0.69		MIPR 020 070 30 XXX L h
			080	54	132	179	202	439	0.78		MIPR 020 080 30 XXX L h
			090	65	159	215	243	527	0.88		MIPR 020 090 30 XXX L h
			100	76	185	251	283	615	0.98		MIPR 020 100 30 XXX L h
			110	86	212	287	323	702	1.08		MIPR 020 110 30 XXX L h
			130	108	265	358	404	878	1.27		MIPR 020 130 30 XXX L h
			150	130	318	430	485	1054	1.47		MIPR 020 150 30 XXX L h
			170	151	371	502	566	1229	1.67		MIPR 020 170 30 XXX L h
			190	173	424	574	647	1405	1.86		MIPR 020 190 30 XXX L h
			210	194	476	645	728	1580	2.06		MIPR 020 210 30 XXX L h
			230	216	529	717	809	1756	2.25		MIPR 020 230 30 XXX L h
			250	238	583	789	890	1932	2.45		MIPR 020 250 30 XXX L h
			270	259	635	860	970	2107	2.65		MIPR 020 270 30 XXX L h
			290	281	688	932	1051	2283	2.84		MIPR 020 290 30 XXX L h
			310	303	741	1003	1132	2458	3.04		MIPR 020 310 30 XXX L h
			330	324	794	1075	1213	2634	3.23		MIPR 020 330 30 XXX L h
			370	367	900	1219	1375	2985	3.63		MIPR 020 370 30 XXX L h
410	411	1006	1362	1536	3336	4.02		MIPR 020 410 30 XXX L h			
450	454	1112	1506	1699	3688	4.41		MIPR 020 450 30 XXX L h			
490	497	1218	1649	1860	4039	4.80		MIPR 020 490 30 XXX L h			

* measured in accordance with EN442

fill in grille code |
code height adjustment:
A: Adjustable 0 - 4,5 cm
B: Adjustable 4,5 - 10 cm

MINI CANAL PRO

HEIGHT 020



MIPR	HEIGHT H cm	LENGTH L cm	WIDTH B cm	HEATING Room temperature 20°C					WEIGHT kg	WATER CONTENT L	ORDER CODE
				35/30 Watts	45/40 Watts	50/45 Watts	55/45 Watts	75/65 Watts			
	020	070	38	61	148	201	227	492	0.92	MIPR 020 070 38 XXX L h	
		080		76	185	251	283	615	1.06	MIPR 020 080 38 XXX L h	
		090		91	222	301	339	737	1.19	MIPR 020 090 38 XXX L h	
		100		106	259	351	396	860	1.32	MIPR 020 100 38 XXX L h	
		110		121	296	401	453	983	1.45	MIPR 020 110 38 XXX L h	
		130		151	371	502	566	1229	1.72	MIPR 020 130 38 XXX L h	
		150		182	445	602	679	1475	1.98	MIPR 020 150 38 XXX L h	
		170		212	519	703	793	1721	2.24	MIPR 020 170 38 XXX L h	
		190		242	593	803	905	1966	2.51	MIPR 020 190 38 XXX L h	
		210		272	667	903	1019	2212	2.77	MIPR 020 210 38 XXX L h	
		230		303	741	1003	1132	2458	3.04	MIPR 020 230 38 XXX L h	
		250		333	815	1104	1245	2704	3.30	MIPR 020 250 38 XXX L h	
		270		363	889	1204	1359	2950	3.56	MIPR 020 270 38 XXX L h	
		290		393	963	1304	1472	3195	3.83	MIPR 020 290 38 XXX L h	
		310		424	1038	1405	1585	3441	4.09	MIPR 020 310 38 XXX L h	
		330		454	1112	1505	1698	3687	4.36	MIPR 020 330 38 XXX L h	
		370		514	1260	1706	1925	4179	4.88	MIPR 020 370 38 XXX L h	
		410		575	1408	1907	2151	4670	5.41	MIPR 020 410 38 XXX L h	
		450		635	1556	2107	2377	5162	5.94	MIPR 020 450 38 XXX L h	
		490		696	1704	2308	2604	5653	6.47	MIPR 020 490 38 XXX L h	

* measured in accordance with EN442

fill in grille code
code height adjustment:
A: Adjustable 0 - 4,5 cm
B: Adjustable 4,5 - 10 cm

JRT-300



8751 050014

POWER SUPPLY

supply voltage

2 x AAA 1.5 V

OUTPUT / INPUT VOLTAGE

valve 24V DC contact

-

potential-free contact

1 (NO/NC)

input from keycard

-

input from window contact

-

fan (0 - 10 V DC)

-

manual 3-position speed controller

-

automatic mode

-

APPLICATIONS

2-pipe



manual (H/C)

-

auto (H/C) - water temperature sensor required

-

4-pipe



manual (H/C)

-

auto (H/C)

-

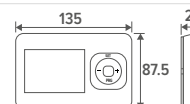
DIMENSIONS

for wall mounting

✓

for recessed-mounting

optional



POSITION

LCD display with backlight

✓

LCD touch screen with backlight

-

protection category IP20

✓

protection category IP30

-

Integrated CO2-sensor

-

humidity sensor

-

FEATURES

programmable time zones

✓

control via Wi-Fi (smartphone app)

-

fan start delay

-

continuous fan speed

-

temperature sensor 80 cm

optional

The indicated outputs at ΔT 50 are exact values, measured in accordance with EN442. This table provides a calculated value using an average correction factor for all other ΔT outputs, valid for all dimensions.

Click www.jaga.com/selection-tools/ to download the calculation tools with the exact outputs. The online calculation tools are kept up to date with the most recent data. Minor output differences between printed tables and the different online calculation tools are therefore completely normal and within the margins of tolerance imposed by the standard.

AVERAGE CORRECTION FACTORS FOR STATIC PRODUCTS ACCORDING TO EN442 - 75/65/20°C

room temperature: 20°C Average N-value: 1.36

TA	TR	65	60	55	50	45	40	35	30	25
75		1.00	0.93	0.85	0.77	0.69	0.61	0.52	0.42	0.31
70		0.94	0.87	0.79	0.72	0.64	0.56	0.48	0.39	0.28
65			0.80	0.74	0.67	0.60	0.52	0.44	0.35	0.25
60				0.68	0.61	0.55	0.48	0.40	0.32	0.23
55					0.56	0.50	0.43	0.36	0.29	0.20
50						0.44	0.38	0.32	0.25	0.18
45							0.34	0.28	0.22	0.15
40								0.24	0.19	0.13
35									0.15	0.10
30										0.07

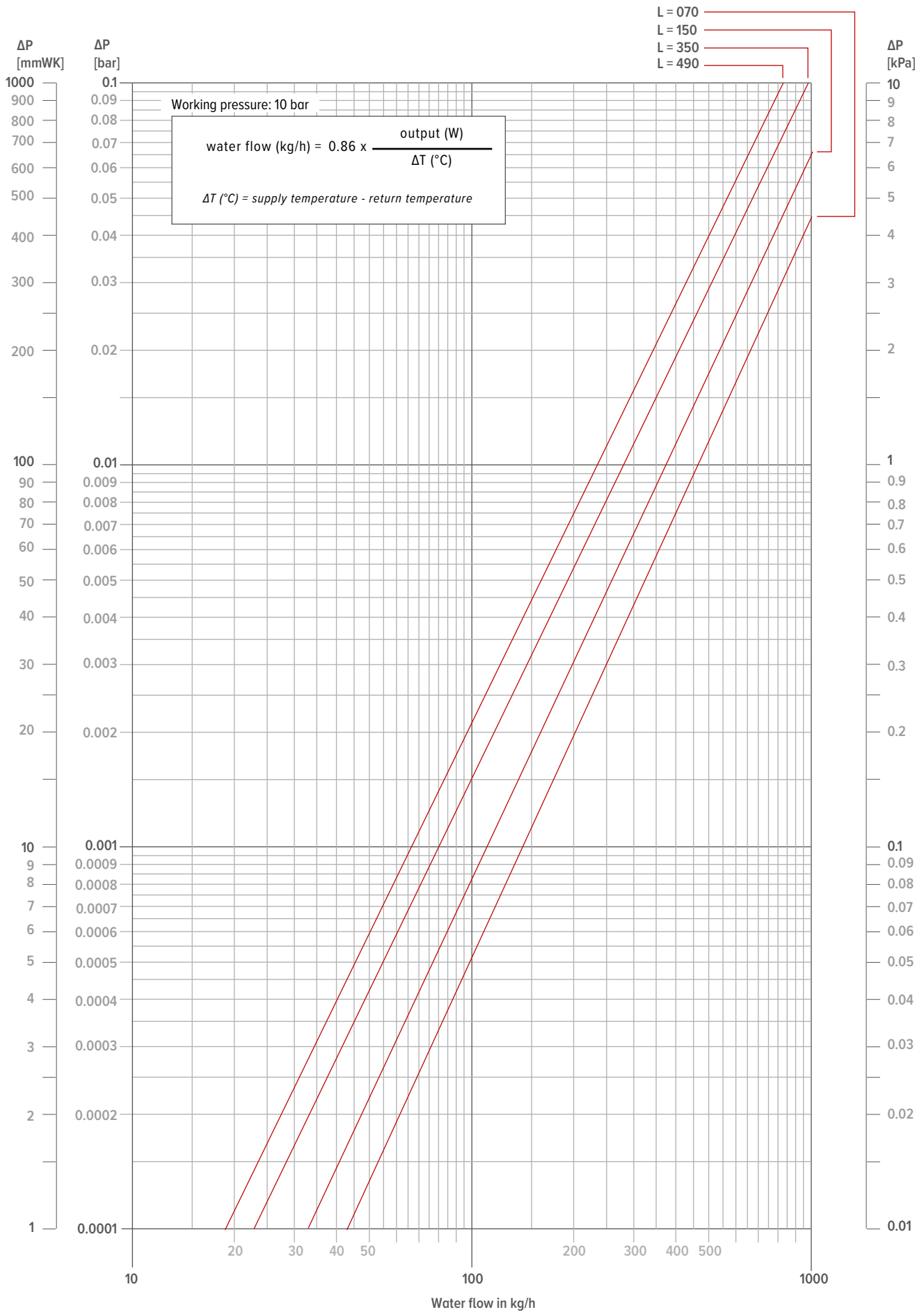
room temperature: 24°C Average N-value: 1.36

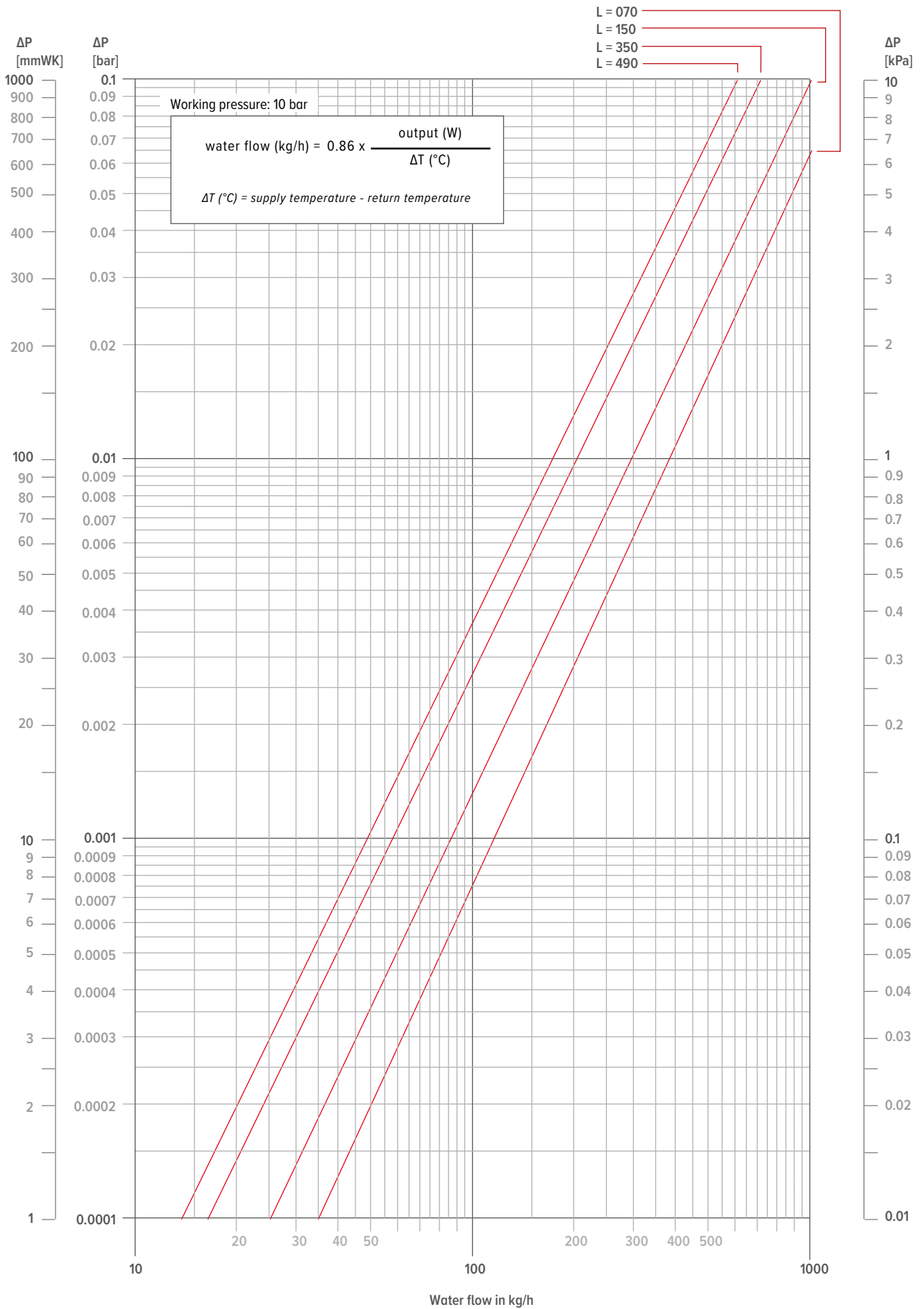
TA	TR	65	60	55	50	45	40	35	30	25
75		0.89	0.82	0.75	0.67	0.59	0.51	0.41	0.31	0.16
70		0.83	0.76	0.69	0.62	0.54	0.47	0.38	0.28	0.14
65			0.70	0.64	0.57	0.50	0.43	0.35	0.25	0.12
60				0.58	0.52	0.45	0.38	0.31	0.23	0.11
55					0.47	0.41	0.34	0.28	0.20	0.09
50						0.36	0.30	0.24	0.17	0.08
45							0.26	0.20	0.14	0.06
40								0.17	0.12	0.05
35									0.09	0.03
30										0.02

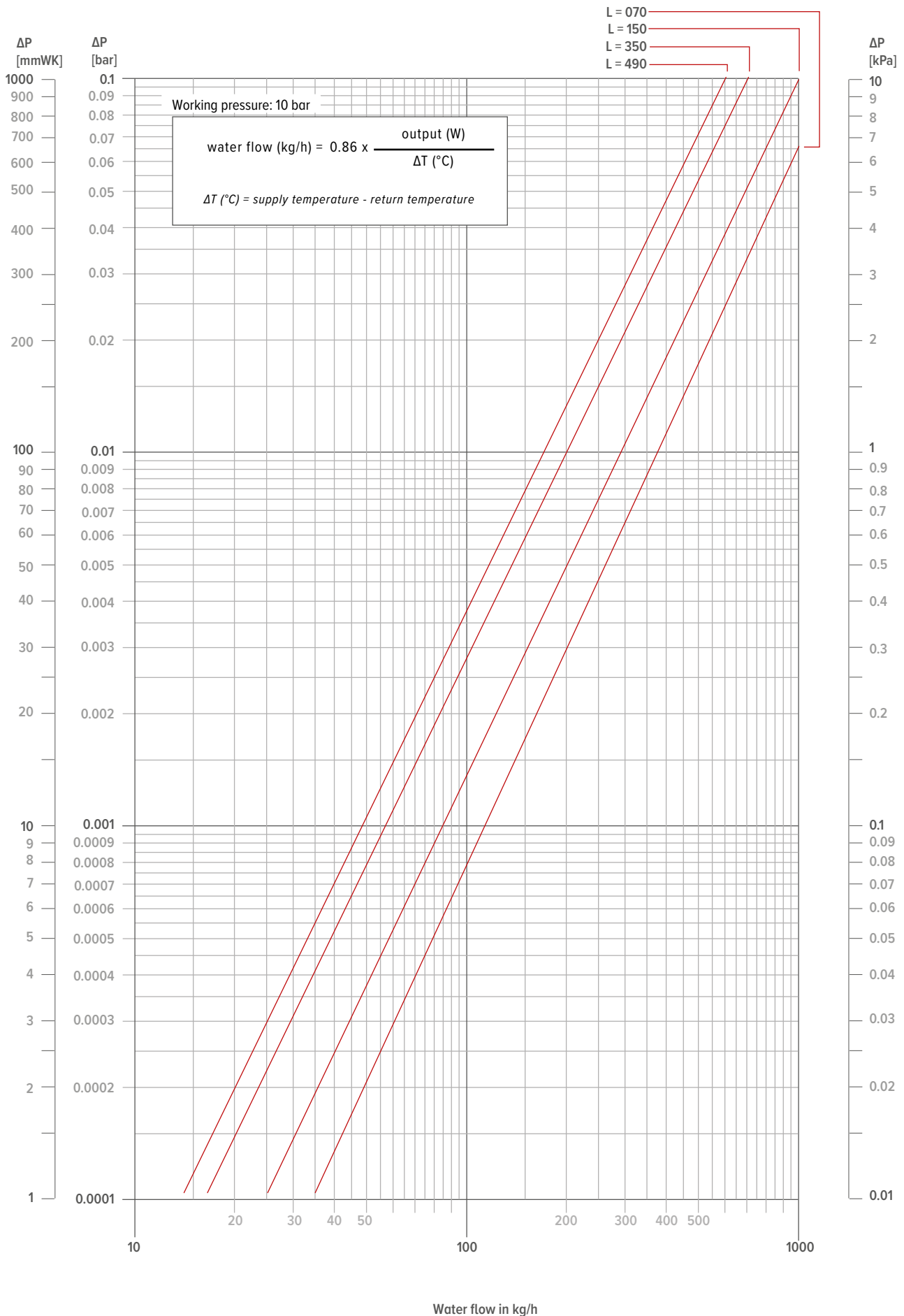
MINI CANAL PRO

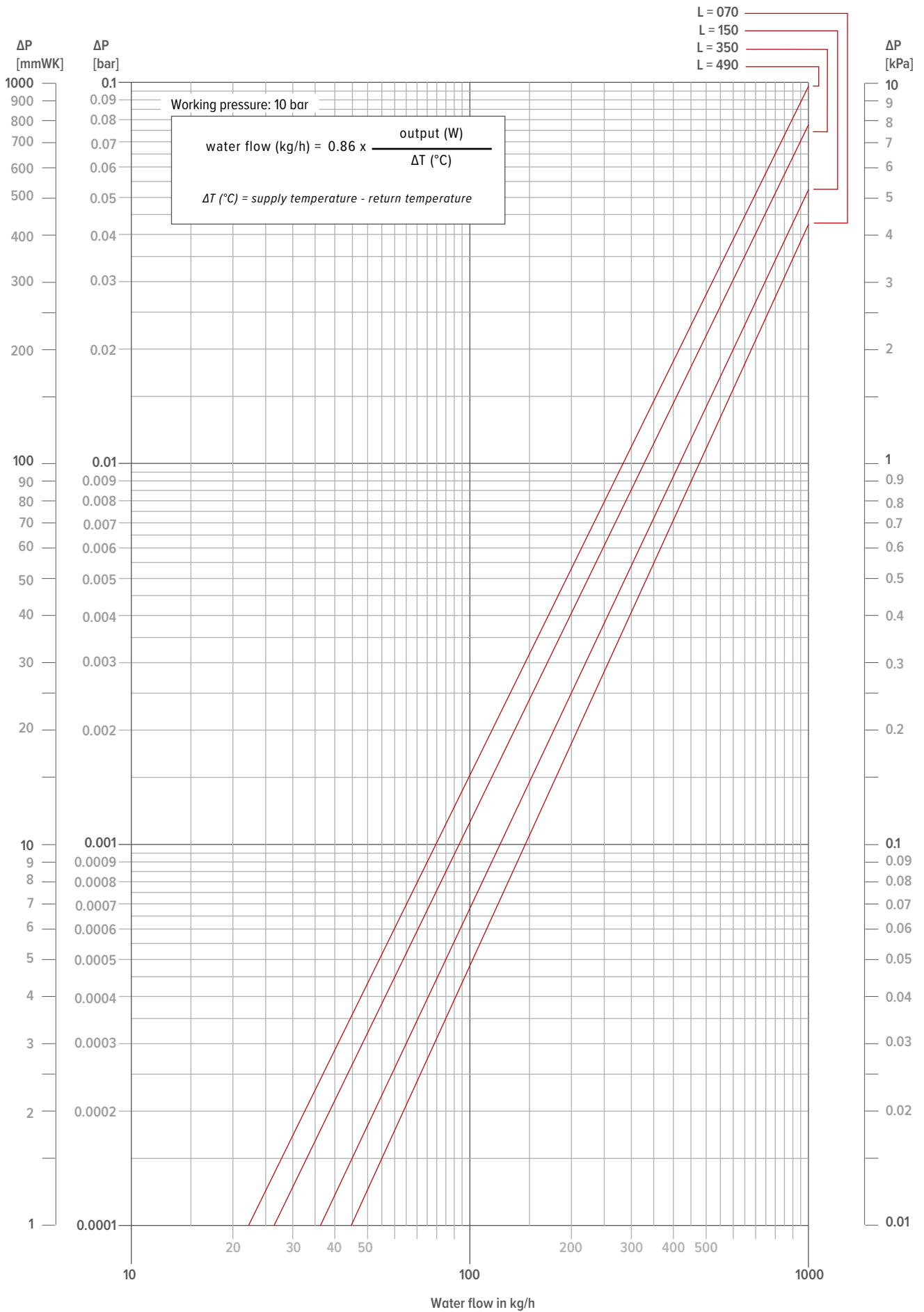
GUIDELINE FOR LIMITING FLOW NOISE

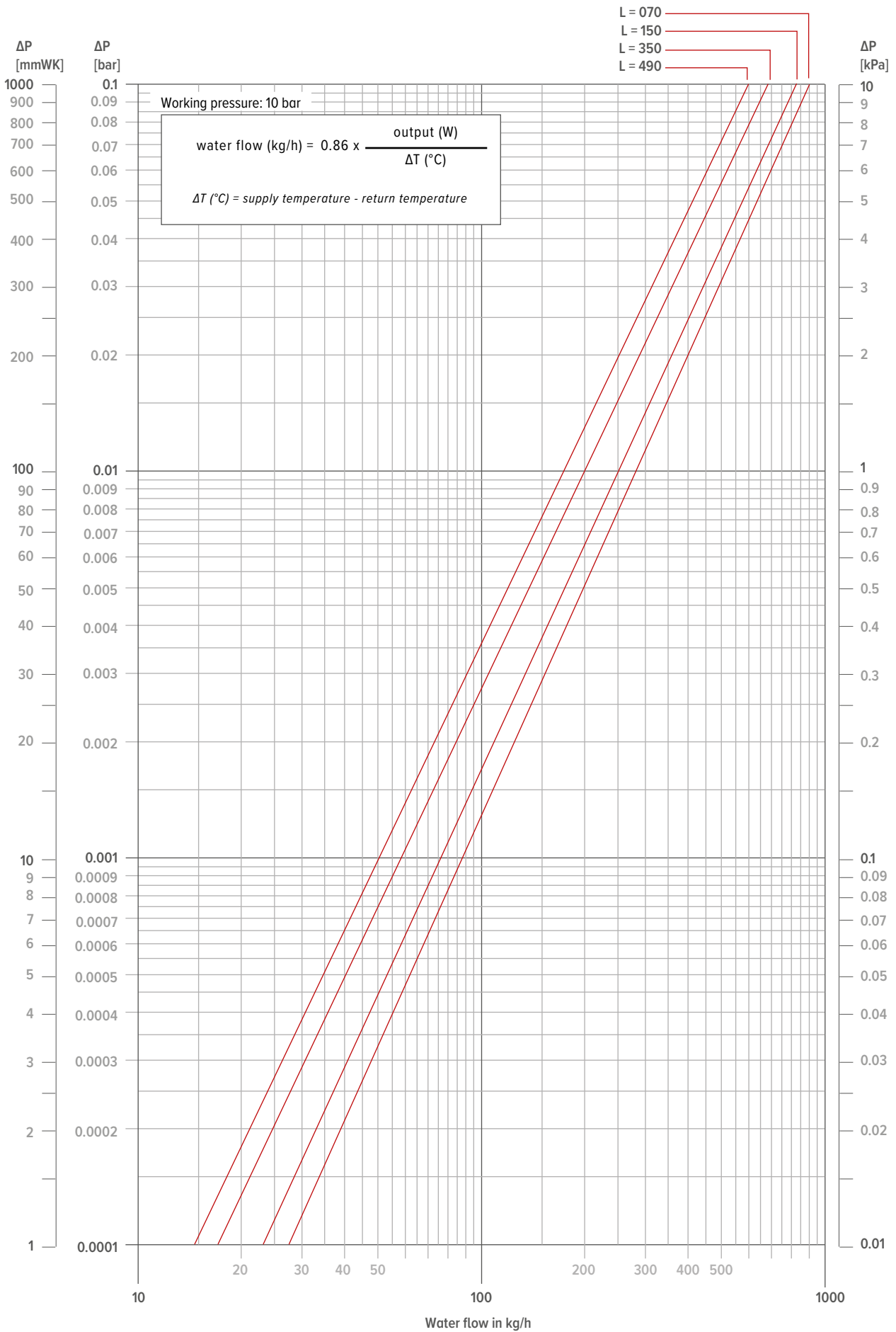
TUBE	outer Ø mm	Wall thickness mm	Max. water speed (EN10255) m/s	water content per metre l	max. water flow kg/h	Maximum power at ΔT (° C) (T supply - T return)						
						ΔT 30	ΔT 20	ΔT 10	ΔT 5	ΔT 4	ΔT 3	ΔT 2
						Watts	Watts	Watts	Watts	Watts	Watts	Watts
GALVANISED PIPE DIN 2440												
3/8 DN10 OD	17.2	2.35	0.40	0.12	173	6028	4019	2009	1005	804	603	402
1/2 DN15 OD	21.3	2.65	0.40	0.20	288	10046	6698	3349	1674	1340	1005	670
3/4 DN20 OD	26.9	2.65	0.42	0.37	559	19515	13010	6505	3253	2602	1952	1301
1 DN25 OD	33.7	3.25	0.49	0.58	1023	35690	23793	11897	5948	4759	3569	2379
1 1/4 DN32 OD	42.4	3.25	0.60	1.01	2182	76101	50734	25367	12684	10147	7610	5073
1 1/2 DN40 OD	48.3	3.25	0.66	1.37	3255	113549	75700	37850	18925	15140	11355	7570
2 DN50 OD	60.3	3.65	0.80	2.21	6365	222025	148017	74008	37004	29603	22203	14802
PRECISION METAL TUBE												
10/1	10	1.00	0.40	0.05	72	2512	1674	837	419	335	251	167
12/1	12	1.00	0.40	0.08	115	4019	2679	1340	670	536	402	268
14/1	14	1.00	0.40	0.11	158	5526	3684	1842	921	737	553	368
15/1	15	1.00	0.40	0.13	187	6530	4353	2177	1088	871	653	435
16/1	16	1.00	0.40	0.15	216	7535	5023	2512	1256	1005	753	502
18/1	18	1.00	0.40	0.20	288	10046	6698	3349	1674	1340	1005	670
22/1	22	1.00	0.40	0.31	446	15572	10381	5191	2595	2076	1557	1038
28/1	28	1.00	0.47	0.53	904	31522	21014	10507	5254	4203	3152	2101
RPE/ALU												
12/2	12	2.00	0.40	0.05	72	2512	1674	837	419	335	251	167
14/2	14	2.00	0.40	0.08	115	4019	2679	1340	670	536	402	268
16/1.5	16	1.50	0.40	0.13	187	6530	4353	2177	1088	871	653	435
16/2	16	2.00	0.40	0.11	158	5526	3684	1842	921	737	553	368
17/2	17	2.00	0.40	0.13	187	6530	4353	2177	1088	871	653	435
18/2	18	2.00	0.40	0.15	216	7535	5023	2512	1256	1005	753	502
20/2	20	2.00	0.40	0.20	288	10046	6698	3349	1674	1340	1005	670
26/3	26	3.00	0.40	0.31	446	15572	10381	5191	2595	2076	1557	1038
32/3	32	3.00	0.47	0.53	904	31522	21014	10507	5254	4203	3152	2101
40/3.5	40	3.50	0.56	0.86	1726	60220	40147	20073	10037	8029	6022	4015
50/4.25	50	4.25	0.66	1.35	3206	111824	74549	37275	18637	14910	11182	7455
63/5	63	5.00	0.80	2.21	6346	221359	147573	73786	36893	29515	22136	14757

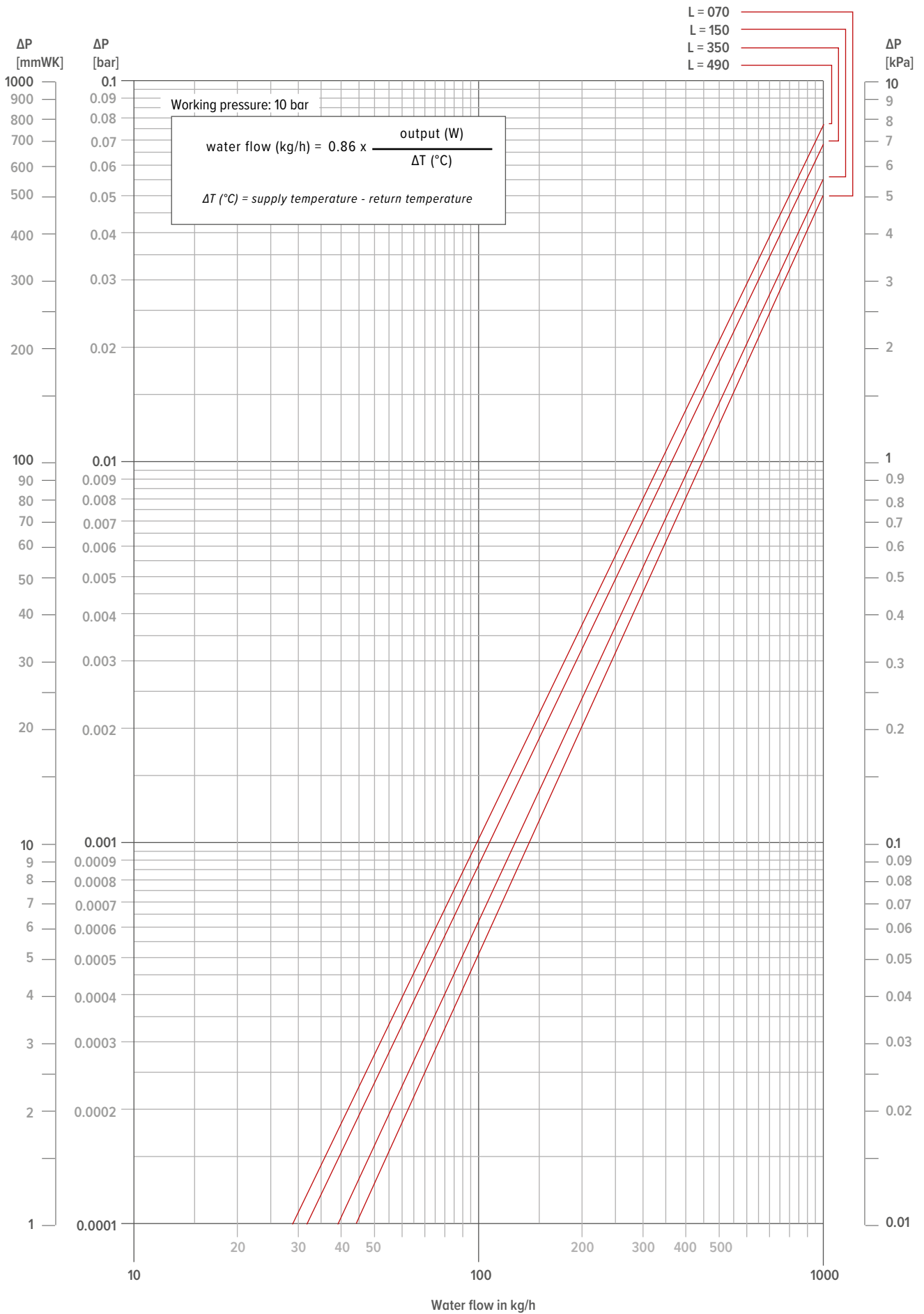


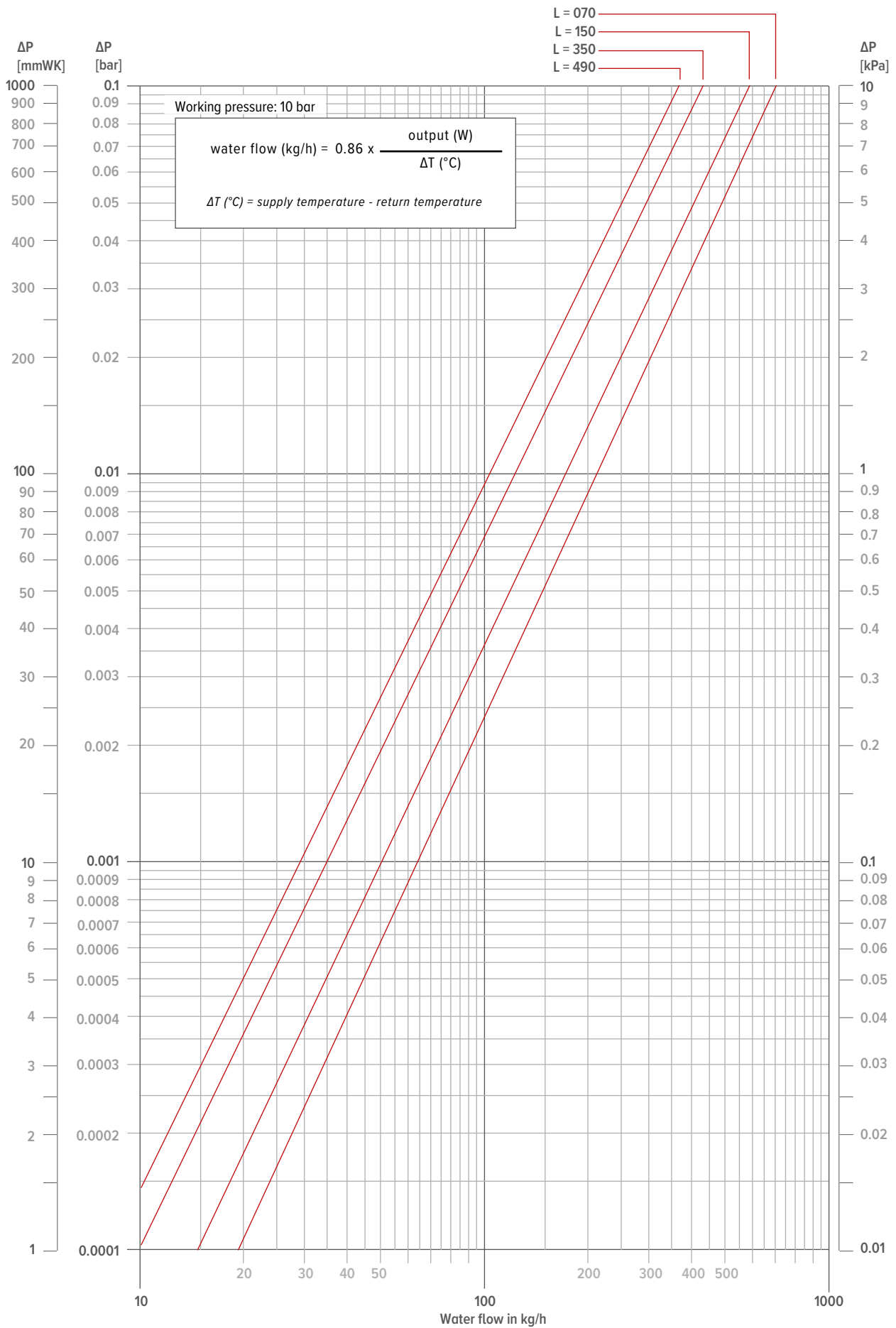


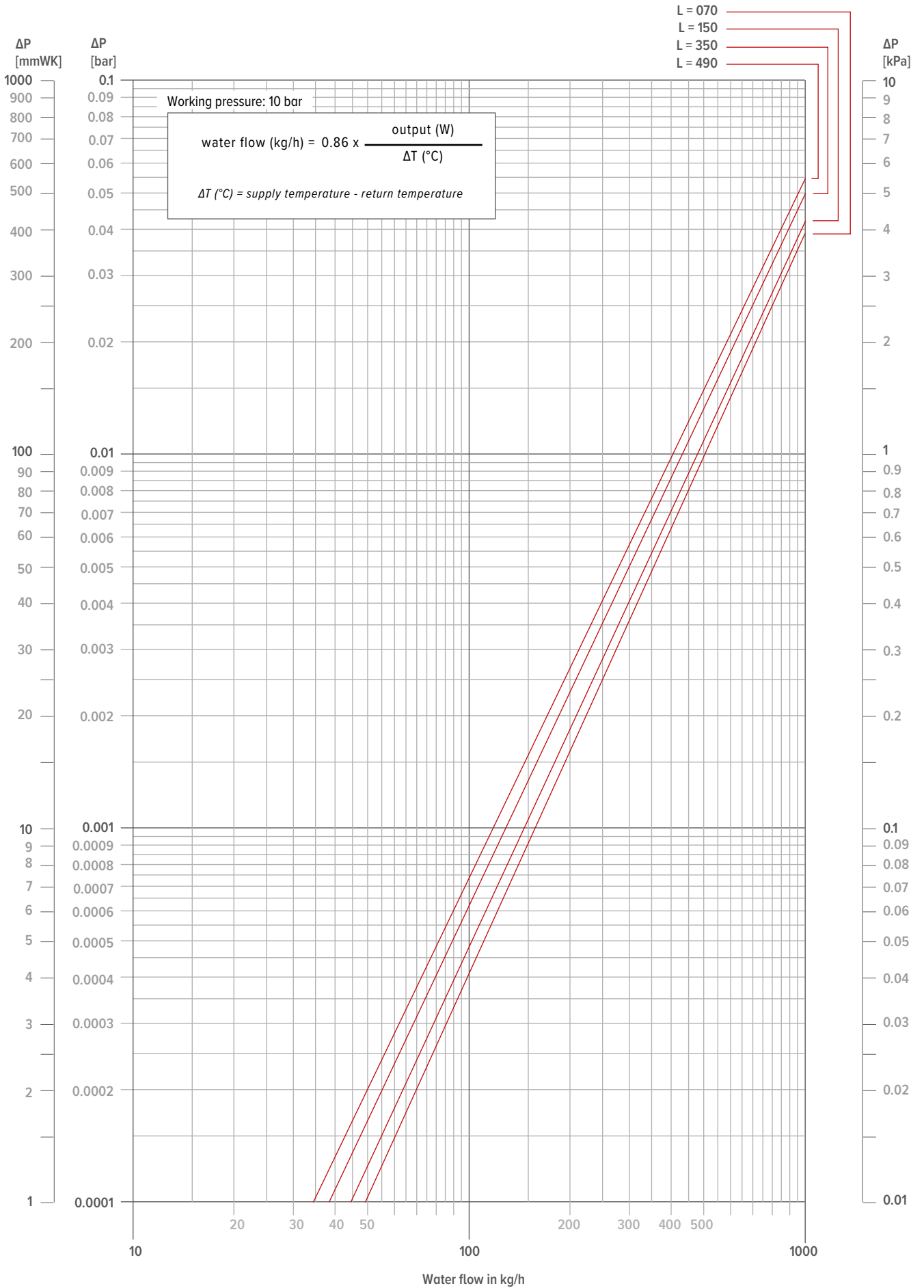














jaga

CLIMATE
DESIGNERS

JAGA INTERNATIONAL JAGA NV

In need of some advice? Make an appointment at the Jaga Advice Centre.

Verbindingslaan 16
3590 Diepenbeek

+32 (0) 11 29 41 12

export@jaga.be
jaga.com