



MINI CANAL

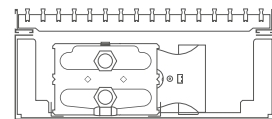
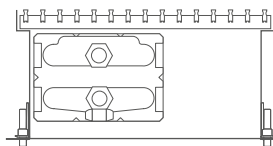
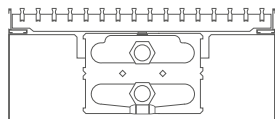


MINI CANAL

CONTENT	3	THERMOSTAT	30
MODEL OVERVIEW	4	PARTS	32
INTRODUCTION	5	CORRECTION FACTORS	36
OVERVIEW GRILLES	6	GUIDELINE FOR LIMITING FLOW NOISE	37
Rigid anodised aluminium grilles	6	PRESSURE DROP	38
Designo rigid anodised aluminium grilles	7	Type 04 other end	38
Retractable anodised aluminium grilles	8	Type 05	39
Retractable stainless steel grille	9	Type 09	40
Roll-up wooden grilles	10	Type 10	41
Designo roll-up wooden grilles	11	Type 14	42
OVERVIEW CORNERS 90° OR 135°	12	Type 15	43
TECHNICAL INFORMATION	14	Type 19	44
Composition	14	Type 20	45
Coding	15	SPECIALS	46
Standard delivery	15	Other systems ventilation	48
Product summary	16	Special versions	48
Dimensions	16	Special accessories	50
Installation	16	Grilles & frames	51
Operating principle	16		
Grille Overview	17		
Accessories	18		
Hydronic connection	19		
Technical table	20		
Height 009	20		
Height 011	23		
Height 014	26		
Height 019	28		

Do you need more output? Then go for the Mini Canal Pro

Do you want Light Cooling as well? Then go for the Mini Canal Hybrid.



	MINI CANAL	MINI CANAL PRO	MINI CANAL HYBRID
OPERATING PRINCIPLE	natural convection	natural convection	convection with fan units
DIMENSIONS			
Height (in cm)	009 - 011 - 014 - 019	009 - 012 - 015 - 020	014
Width (in cm)	14 - 18 - 26 - 34 - 42	14 - 18 - 23 - 30 - 38	26 - 34 - 42
Length (in cm)	070 - 130 (in steps of 10 cm) 150 - 490 (in steps of 20 cm)	070 - 130 (in steps of 10 cm) 150 - 490 (in steps of 20 cm)	070 - 130 (in steps of 10 cm) 150 - 310 (in steps of 20 cm)
OUTPUT			
(75/65/20°C) Watts	76 - 4184	84 - 4407	517 - 8779
(16/18/27°C) Watts	-	-	49 - 380
HYDRONIC CONNECTION			
Opposite end connections	B14 H009 & B14 H011	B14 H009 & B14 H012	-
Same-end connection			✓
height	009 011 014 019	height 009 012 015 020	
width 14	- - ✓ ✓	width 14 - - ✓ ✓	
width 18	✓ ✓ ✓ ✓	width 18 ✓ ✓ ✓ ✓	
width 26	✓ ✓ ✓ ✓	width 23 ✓ ✓ ✓ ✓	
width 34	✓ ✓ ✓ ✓	width 30 ✓ ✓ ✓ ✓	
width 42	✓ ✓ ✓ ✓	width 38 ✓ ✓ ✓ ✓	
ELECTRICAL CONNECTION			
Power supply 230 VAC	-	-	optional
Power supply 24 VDC	-	-	optional
ACCESSORIES			
Anchorage	✓	-	✓
Ventilation	optional	optional	optional
Cover plate	optional	✓	optional
Acoustic strip	optional	optional	optional
Height adjustment 0 - 4.5 cm	optional	✓	optional
Height adjustment 4.5 - 10 cm	optional	optional	optional
Base insulation	optional	optional	optional
3-sided insulation	optional	optional	optional
GRILLE			
Rigid aluminium grilles	✓	✓	✓
Designo rigid aluminium grilles	✓	✓	✓
Roll-up aluminium grilles	✓	✓	✓
Roll-up stainless steel grille	✓	✓	✓
Roll-up wooden grilles	✓	✓	✓
Designo roll-up wooden grilles	✓	✓	✓
Pliable aluminium grilles	-	✓	-

MINI CANAL

COMPACT DIMENSIONS AND SHALLOW INSTALLATION DEPTH

For spaces with large windows, conservatories, display windows and offices.

From a depth of 9 cm, Mini Canal is the perfect solution for multi - storey buildings and computer floors.

Hidden under the grille is an ultra fast Low-H₂O element.

The internal elements of the Mini Canal have been made "invisible", using lacquered dark grey components.

The only eye-catching element left is the grille-cover which can be perfectly tailored to match the floor or the interior design.

- height from 9 cm
- delivered ready-made
- a range of grilles for every interior
- a perfectly tailored comfort temperature
- Low-H₂O technology with super conductive and ultra fast heat exchanger for low energy consumption and maximum heat emission
- 30 year warranty on the heat exchanger



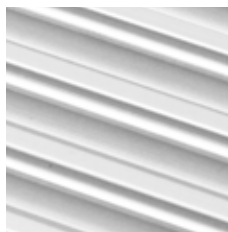
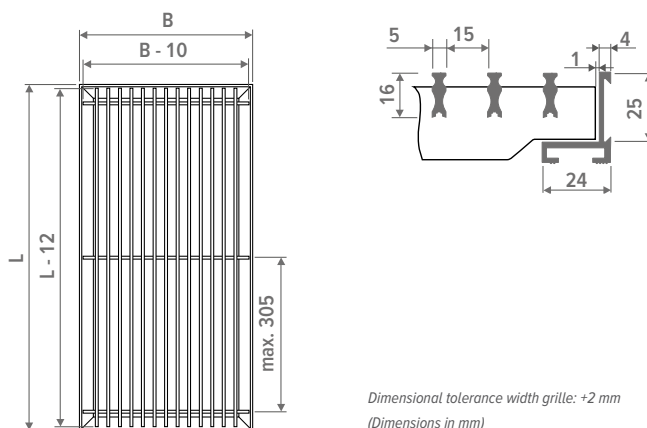


RIGID ANODISED ALUMINIUM GRILLES

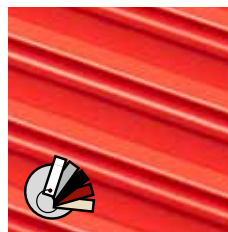
Rigid anodized aluminium grille with matching colour frame.

PROPERTIES

- eco-friendly, scratch-resistant powder coating with high UV-resistance
- free air flow: 75%
- no correction factor to apply on the output



SNA Alu. natural



SNC/XXX Alu. coated

⚠ Our grilles are available in all colours, with the exception of Sand blast grey 001. In case of intensive use (installation in circulation areas, for example in front of sliding windows and doors), wear is evidently inevitable.



SBL Black



SDB Dark brown



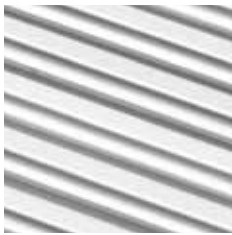
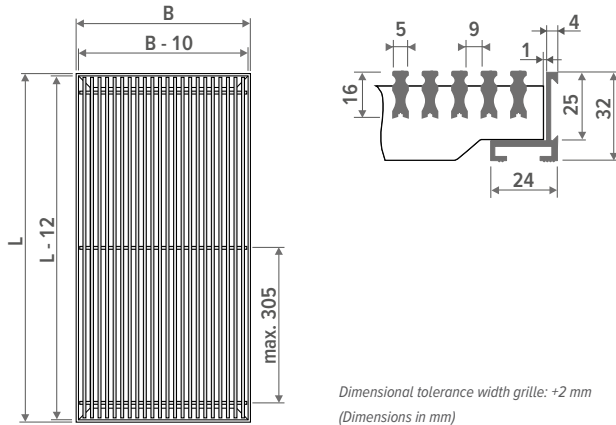
SBR Brass-coloured

DESIGNO RIGID ANODISED ALUMINIUM GRILLES

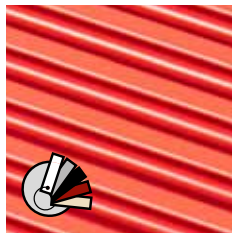
Rigid anodized aluminium grille, Designo model with reduced slat spacing. Matching colour frame.

PROPERTIES

- eco-friendly, scratch-resistant powder coating with high UV-resistance
- free air flow: 62.5%
- output correction factor: 0.97



DNA Alu. natural



DNC/XXX Alu. coated

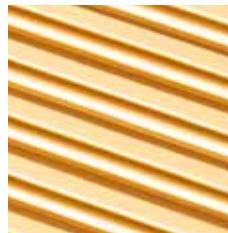
! Our grilles are available in all colours, with the exception of Sand blast grey 001. In case of intensive use (installation in circulation areas, for example in front of sliding windows and doors), wear is evidently inevitable.



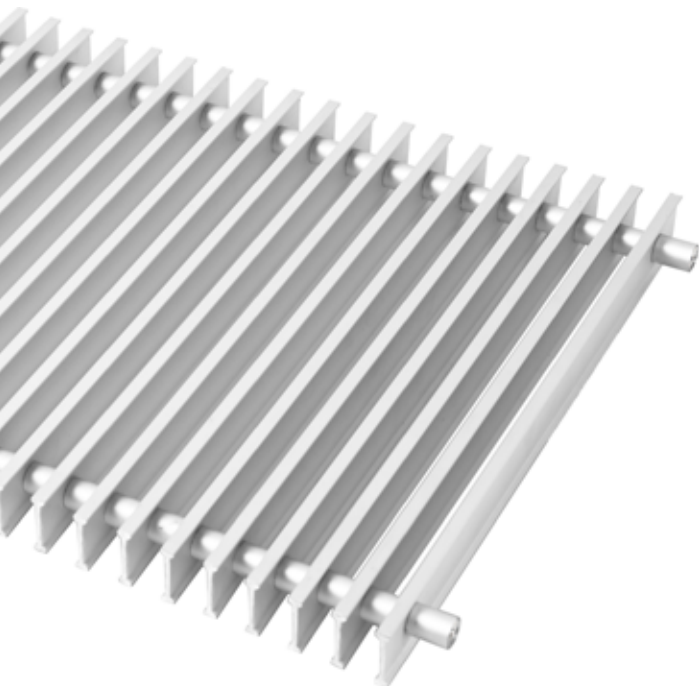
DBL Black



ddb Dark brown



DBR Brass-coloured

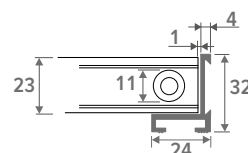
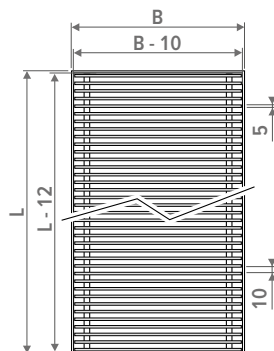


RETRACTABLE ANODISED ALUMINIUM GRILLES

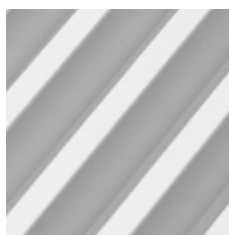
Roll-up anodized aluminium grille with frame in matching colour.

PROPERTIES

- eco-friendly, scratch-resistant powder coating with high UV-resistance
- free air flow: 70%
- no correction factor to apply on the output



Dimensional tolerance width grille: +2 mm
(Dimensions in mm)



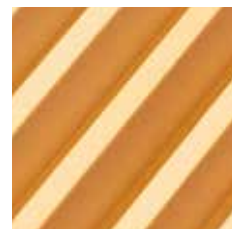
RNA Alu. natural



RBL Black



RDB Dark brown



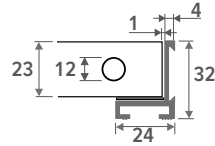
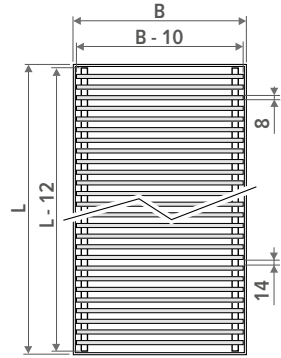
RBR Brass-coloured

RETRACTABLE STAINLESS STEEL GRILLE

Roll-up grille in high grade stainless steel 1.4301. With matching frame in natural anodized aluminium. Maximum length: 6 meter.

PROPERTIES

- eco-friendly, scratch-resistant powder coating with high UV-resistance
- free air flow: 60%
- output correction factor 0.96

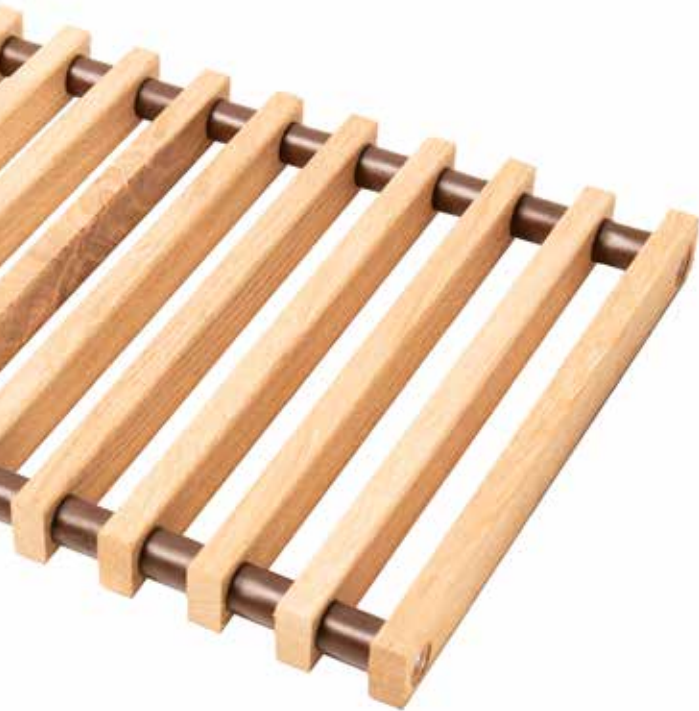


Dimensional tolerance width grille: +2 mm
(Dimensions in mm)



RSS Stainless steel



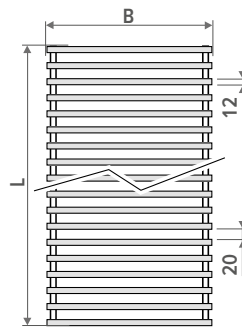


ROLL-UP WOODEN GRILLES

Roll-up natural or varnished grille, with dark brown coloured synthetic spacers. Frame in brown anodized aluminium.

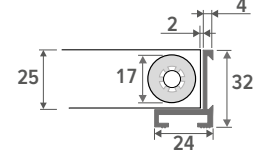
PROPERTIES

- eco-friendly, scratch-resistant powder coating with high UV-resistance
- free air flow: 63%
- output correction factor 0.97

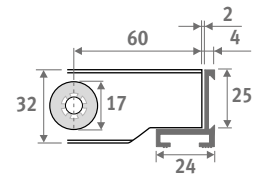


Dimensional tolerance width grille: +2 mm
(Dimensions in mm)

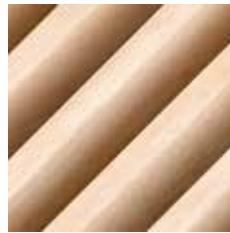
WIDTH GRILLE ≤ 40.8 CM



WIDTH GRILLE ≥ 44.8 CM



NATURAL WOODEN ROLL-UP GRILLES



RON Oak natural



RBN Beech natural



RMN Merbau natural

VARNISHED WOODEN ROLL-UP GRILLES



ROV Oak varnished



RBV Beech varnished



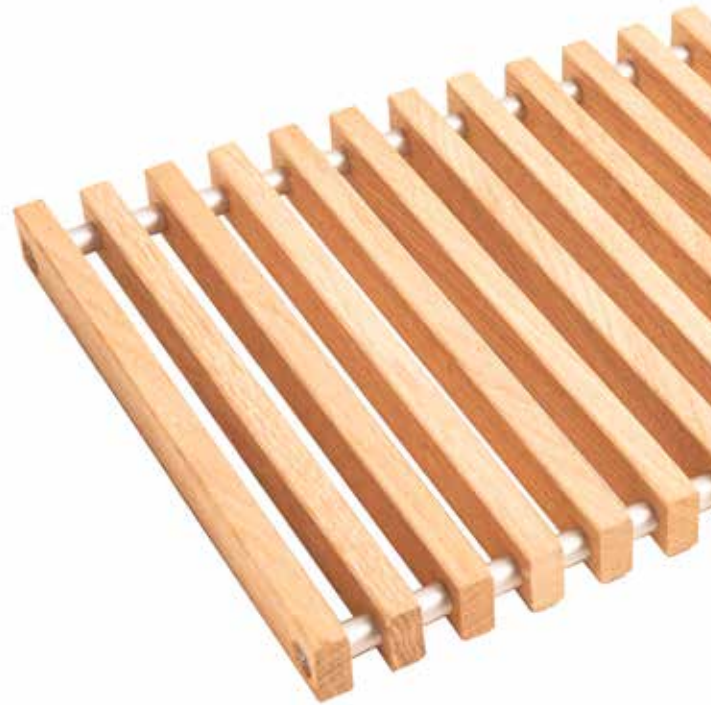
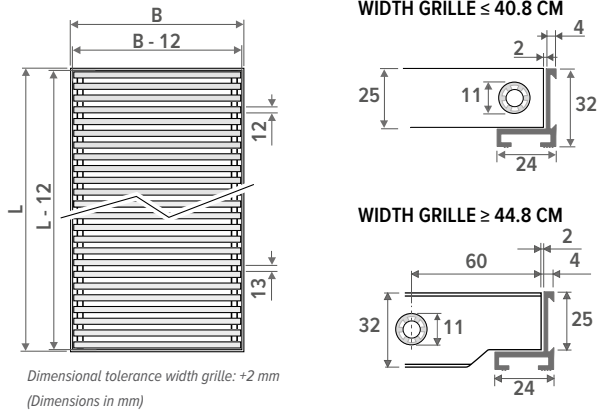
RMV Merbau varnished

DESIGNO ROLL-UP WOODEN GRILLES

Roll-up natural or varnished grille, Designo model with reduced slat spacing and natural colour anodized aluminium spacers. Frame in natural coloured anodized aluminium.

PROPERTIES

- eco-friendly, scratch-resistant powder coating with high UV-resistance
- free air flow: 52%
- output correction factor: 0.93

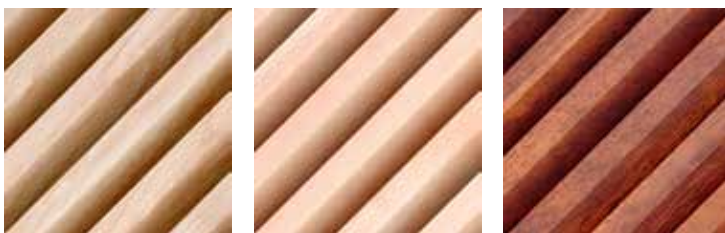


DESIGNO NATURAL WOODEN RETRACTABLE GRILLES



DON Oak natural **DBN** Beech natural **DMN** Merbau natural

DESIGNO VARNISHED ROLL-UP WOODEN GRILLES



DOV Oak varnished **DBV** Beech varnished **DMV** Merbau varnished



WOODEN AND ALUMINIUM GRILLES

- to order corner units, please complete the Mini Canal code with the desired angle (see code of the angle in the illustrations below)
- delivery: mitred ducts and grilles and couplings for invisible installation
- if possible, use standard lengths in order to avoid additional costs for customisation
- output values can be consulted in the tables of the respective length
- please provide a drawing with your order.

ORDERING EXAMPLE

MICL 009 110 14 RNA TW090 TM090

LEGEND (in mm)

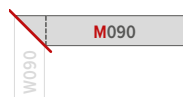
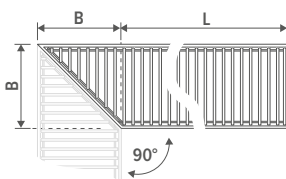
B	140	180	260	340	420
A	60	75	110	140	175

SINGLE CORNERS



DISTINCT CORNERS

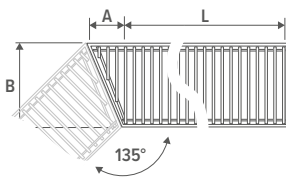
See Specials



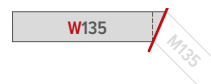
C01: M090 (corner 90° M)



C03: W090 (corner 90° W)



C02: M135 (corner 135° M)

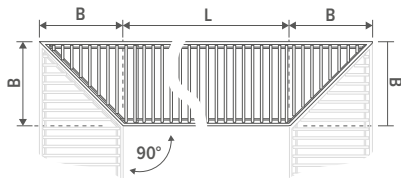


C04: W135 (corner 135°)

MINI CANAL

OVERVIEW CORNERS 90° OR 135°

DOUBLE CORNERS



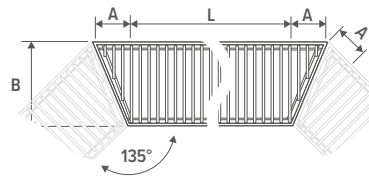
C11: TW090/TM090 (2 x corner 90° T)



C05: PW090/PW090 (2 x corner 90° PW)



C08: PM090/PM090 (2 x corner 90° PM)



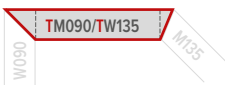
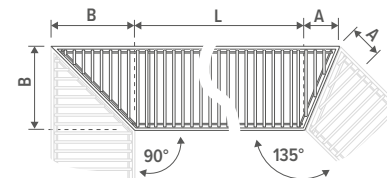
C13: TW135/TM135 (2 x corner 135° T)



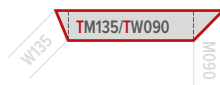
C10: PM135/PM135 (2 x corner 135° PM)



C07: PW135/PW135 (2 x corner 135° PW)



C12: TW090/TM135 (corner 90° & 135° T)



C14: TW135/TM090 (corner 135° & 90° T)



C06: PW090/PW135 (corner 90° & 135° PW)



C09: PM090/PM135 (corner 90° & 135° PM)



DISTINCT CORNERS

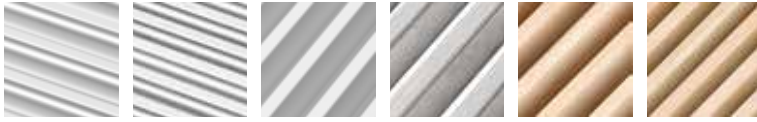
See Specials

COVER PLATE

protects the Mini Canal against contamination and damaging during construction works

GRILLE

aluminium and wooden grilles in a variety of colours and materials



Rigid aluminium grilles

Designo rigid aluminium grilles

Roll-up aluminium grilles

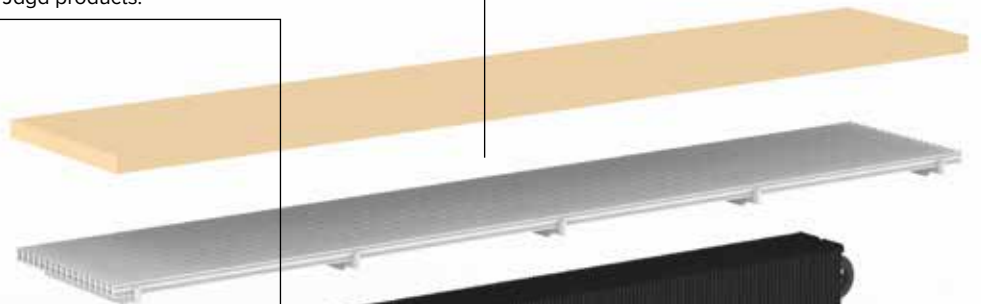
Roll-up stainless steel grille

Roll-up wooden grilles

Designo roll-up wooden grilles

LOW-H₂O HEAT EXCHANGER

The Low-H₂O heat exchanger is the hyper-reactive, aluminium and copper motor of the ecological Jaga products.



AIR VENT

OPTION

acoustic strip in black rubber prevents impact sounds

BRACKETS

from electrolytic galvanized steel plate dark grey lacquered in RAL 7024

SEALS

for the connection holes, made of black synthetic material



PRE-PERFORATED SYSTEM FOR CONNECTIONS

provided as standard to enable continuous installation

ANCHORAGE

number in accordance with length

ALUMINIUM L-PROFILE / Z-PROFILE

in anodised aluminium, colour customised to the grille



L-profile MICL

Z-profile MICZ

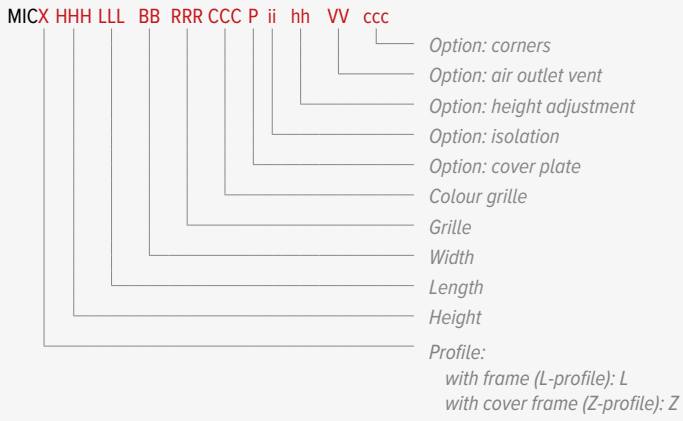
MINI CANAL DUCT

from Sendzimir galvanized and dark grey lacquered steel plate; thickness 1 mm, with connection holes on all sides

OPTIONAL
nozzle(s) for ventilation duct

OPTION
easy height adjustment for uneven floors. Provided with acoustic decoupling.

ORDER CODE MINI CANAL



STANDARD DELIVERY

- Completely assembled dark-grey floor drain with:
- Low-H₂O heat exchanger met vuilafstotende en stofwerende laklaag in grafietgrijs (RAL 7024)
 - air vent(s) 1/8" and drain plug(s) 1/2"
 - grille and mounted L-profile frame or Z-profile cover frame
 - anchorage

PROFILE

L-profile: MICL



Z-profile: MICZ



HEIGHT / WIDTH

HEIGHT	WIDTH	14	18	26	34	42
009		✓	✓	✓	✓	✓
011		✓	✓	✓	✓	✓
014		✓	-	✓	✓	✓
019		-	-	✓	✓	✓

LENGTH

070 cm to 490 cm

GRILLE



COLOUR GRILLE

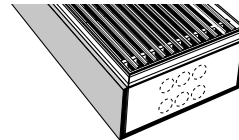
Our grilles are available in all colours, with the exception of Sand blast grey 001. In case of intensive use (installation in circulation areas, for example in front of sliding windows and doors), wear is evidently inevitable.

OPTIONS

Cover plate



Isolation



Height adjustment

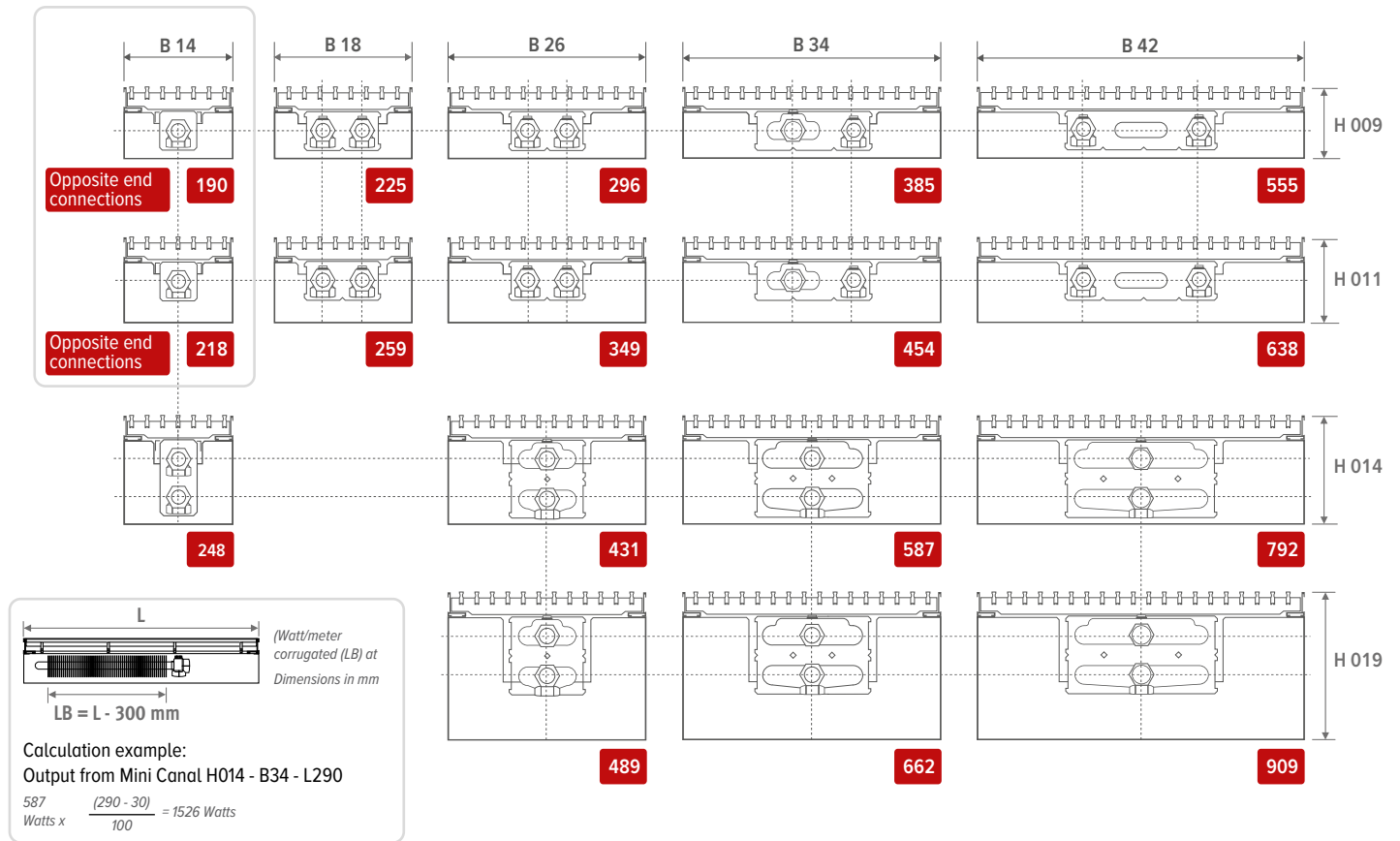


Air outlet vent

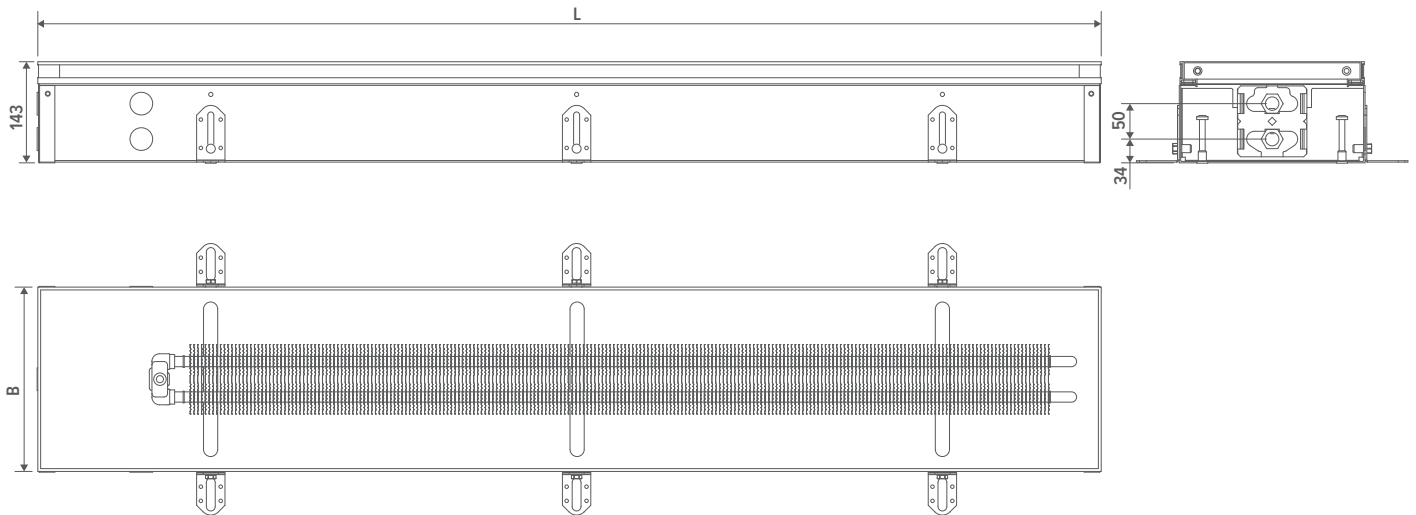


Corners





DIMENSIONS (in mm)

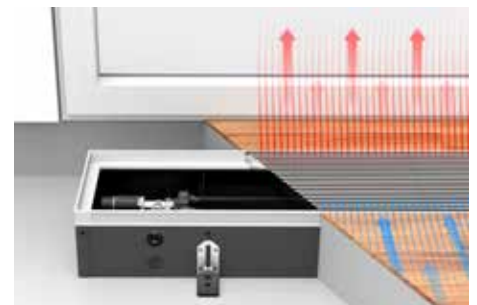


INSTALLATION

- position builder's level on finished floor level by means of anchoring bars or the optional height adjusters
- feed the pipes through and seal the through holes
- possibly provide additional tube for the remote controlled radiator valve
- test installation for pressure levels
- finish the floor

OPERATING PRINCIPLE

The downward cold air flow associated with glazed façades often causes discomfort. Mini Canal ensures a warm air curtain: the cold air layer from the glass and the cooler return air on the floor are drawn in, heated and mixed with the warmer upper air so a balanced and even comfort temperature is achieved.



MINI CANAL

GRILLE OVERVIEW

CATEGORY 1



SNA
Rigid alu. natural



SBR
Rigid alu. Brass-coloured

CATEGORY 2



DNA
Designo
Rigid alu. natural



DBR
Designo rigid alu.
Brass-coloured



DDB
Designo rigid alu.
Dark brown

CATEGORY 3



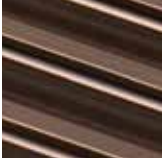
DMV
Designo
roll-up wooden
Merbau varnished



DON
Designo
roll-up wooden oak
natural



RSS
roll-up stainless
steel



SDB
Rigid alu. Dark
brown



SBL
Rigid alu. Black



DBL
Designo
rigid alu. Black



RMN
roll-up wooden
Merbau natural



RMV
roll-up wooden
Merbau varnished



DOV
Designo
roll-up wooden oak
varnished



RBL
roll-up aluminium.
Black



RBN
Roll-up wooden
beech natural



RBV
Roll-up wooden
beech varnished



RBR
Roll-up aluminium.
Brass-coloured



RDB
roll-up aluminium.
Dark brown



DBV
Designo
roll-up wooden
beech varnished



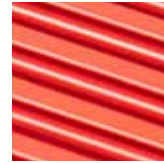
RNA
roll-up aluminium.
natural



RON
roll-up wooden oak
natural



ROV
roll-up wooden oak
varnished



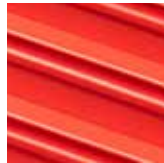
DNC XXX
Designo
rigid coated alu



DBN
Designo
roll-up wooden
beech natural



DMN
Designo
roll-up wooden
Merbau natural

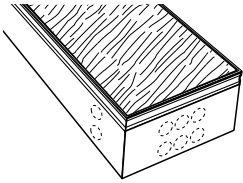


SNC XXX
rigid coated alu

MINI CANAL

ACCESSORIES

COVER PLATE

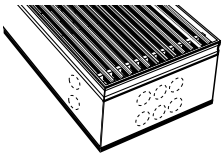


- fibreboard, thickness 22 mm
- protects the Mini Canal against contamination and damaging during construction works

CODE
M I C L H H H L L L B B X X X P pre-mountend

fill in grille code
Enter width
fill out length
Enter the height.

BASE INSULATION



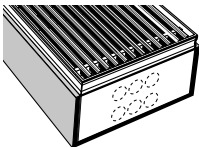
(not available separately)

- dark grey extruded EPDM, thickness 5 mm
- also to avoid transfer of noise when used on upper storeys

CODE
M I C L H H H L L L B B X X X I1 pre-mountend

fill in grille code
Enter width
fill out length
Enter the height.

3-SIDED INSULATION



(not available separately)

dark grey extruded EPDM, thickness 5 mm

CODE
M I C L H H H L L L B B X X X I2 pre-mountend

fill in grille code
Enter width
fill out length
Enter the height.

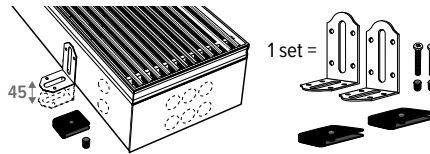
BASE INSULATION & 3-SIDED INSULATION

(not available separately)

CODE
M I C L H H H L L L B B X X X I3 pre-mountend

fill in grille code
Enter width
fill out length
Enter the height.

HEIGHT ADJUSTMENT

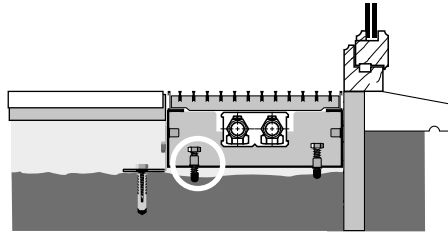


- simple height control for uneven subfloors
- provided with acoustic decoupling

CODE
M I C L H H H L L L B B X X X A 0 - 4.5 cm pre-mountend
M I C L H H H L L L B B X X X B 4 - 10 cm pre-mountend

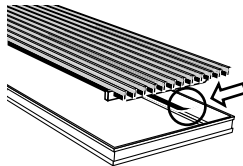
fill in grille code
Enter width
fill out length
Enter the height.

LENGTH cm	SETS	LENGTH cm	SETS
110	2	330 > 370	7
130 > 190	3	410	8
210	4	450 > 490	10
230 > 310	5		



The height control option is always provided with extra adjusting screws in order to install the duct flat against the window frame.

ACOUSTIC STRIP



- for aluminium and wood grilles (not for stainless steel)
- black adhesive rubber strip, thickness 0.5 mm
- prevents impact sounds
- roll 6 metre
- to avoid contact noises. Order the number of rolls required according to the circumference of the frame: $(B + L) \times 2$.

CODE
7690.02

METAL CONNECTION ADAPTER



- connection for pretreated air
- height 4 cm x length 9 cm
- made from galvanised steel plate

CODE
M I C L H H H L L L B B X X X V1 4 x 9 cm

fill in grille code
Enter width
fill out length
Enter the height.

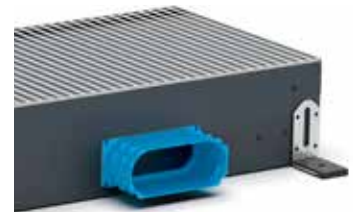


- connection for pretreated air
- supply diameter: Ø8 - Ø10 - Ø12.5
- made from galvanised steel plate

CODE
M I C L 014 L L L B B X X X V2 Ø8 cm
M I C L 019 L L L B B X X X V2 Ø8 cm
M I C L 019 L L L B B X X X V3 Ø10 cm
M I C L 019 L L L B B X X X V4 Ø12.5 cm

fill in grille code
Enter width
fill out length

SYNTHETIC CONNECTION ADAPTER



- pre-assembled ex-factory
- height 5.2 cm x length 13.2 cm
- synthetic material
- supplied with snap connections
- 2 O-rings are supplied

CODE
M I C L H H H L L L B B X X X V5 Pre-perforated opening
M I C L H H H L L L B B X X X V6 Pre-mountend

fill in grille code
Enter width
fill out length
Enter the height.

MINI CANAL

Mini Canal H009 & H011

Connection set 3/4" Eurocone



set 271 Kv max. 0.6

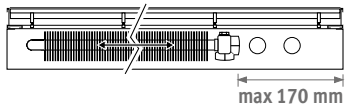
TWO PIPE	THERMOSTATIC HEAD	
COMC JH2 AB 4...	AB	
COMC JH2 RD 4...	RD	
COMC JH2 RW 4...	RW	
COMC JH2 MA 4...	MA	
COMC JH2 24 4...	24 (24 VDC)	
COMC JH2 23 4...	23 (230VAC)	

fill in sleeve coupling code



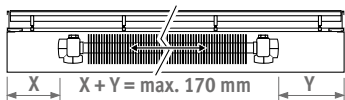
MAXIMUM SPACE FOR CONNECTION

Same-end connection

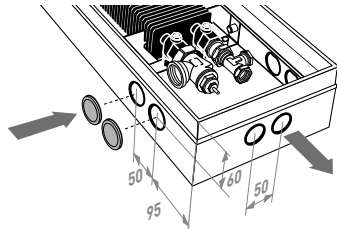


Opposite end connections,

width 14 and height 009 & 011



CONNECTION DIMENSIONS



Mini Canal H014 & H019

Connection set 3/4" Eurocone



set 272 Kv max. 0.6

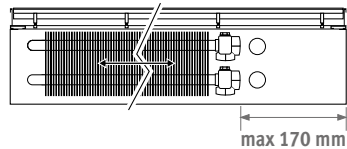
TWO PIPE	THERMOSTATIC HEAD	
COMC JV2 AB 4...	AB	
COMC JV2 RD 4...	RD	
COMC JV2 RW 4...	RW	
COMC JV2 MA 4...	MA	
COMC JV2 24 4...	24 (24 VDC)	
COMC JV2 23 4...	23 (230VAC)	

fill in sleeve coupling code

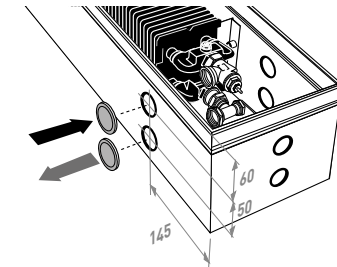


MAXIMUM SPACE FOR CONNECTION

Same-end connection



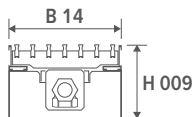
CONNECTION DIMENSIONS



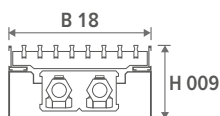
HYDRONIC CONNECTION

Sleeve couplings 3/4" Eurocone

PRECISION METAL TUBE		SYNTHETIC OR RPE/ALU	
CODE	Tube Ø	CODE	Tube Ø
112	12/1	612	12/2
114	14/1	614	14/2
115	15/1	616	16/2
116	16/1	618	18/2
118	18/1	619	16/1.5
		620	20/2



opposite end connections



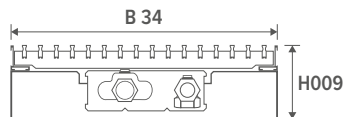
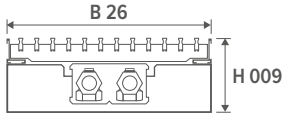
MICL	HEIGHT H cm	LENGTH L cm	WIDTH B cm	HEATING Room temperature 20°C					WEIGHT kg	WATER CONTENT L	ORDER CODE
				35/30 Watts	45/40 Watts	50/45 Watts	55/45 Watts	75/65 Watts			
MICL	009	070	14	11	26	34	38	76	4	0.11	MICL 009 070 14 XXX
		080		14	32	42	47	95	5	0.13	MICL 009 080 14 XXX
		090		17	38	51	56	114	5	0.14	MICL 009 090 14 XXX
		100		20	45	59	66	133	6	0.16	MICL 009 100 14 XXX
		110		23	51	67	75	152	6	0.18	MICL 009 110 14 XXX
		120		26	58	76	85	172	7	0.19	MICL 009 120 14 XXX
		130		28	64	84	94	190	7	0.21	MICL 009 130 14 XXX
		150		34	77	102	113	229	8	0.24	MICL 009 150 14 XXX
		170		40	90	118	132	267	9	0.27	MICL 009 170 14 XXX
		190		45	102	135	150	304	10	0.30	MICL 009 190 14 XXX
		210		51	115	152	169	342	11	0.34	MICL 009 210 14 XXX
		230		57	128	169	188	381	12	0.37	MICL 009 230 14 XXX
		250		63	141	186	207	419	13	0.40	MICL 009 250 14 XXX
		270		68	154	203	226	457	14	0.43	MICL 009 270 14 XXX
		290		74	167	219	245	495	15	0.46	MICL 009 290 14 XXX
		310		80	179	236	264	533	16	0.50	MICL 009 310 14 XXX
		330		85	192	253	282	571	17	0.53	MICL 009 330 14 XXX
		350		91	205	270	301	609	18	0.56	MICL 009 350 14 XXX
		370		97	218	287	320	647	19	0.59	MICL 009 370 14 XXX
		390		102	231	304	339	685	20	0.62	MICL 009 390 14 XXX
410	108	243	321	358	723	21	0.66	MICL 009 410 14 XXX			
430	114	256	337	376	761	22	0.69	MICL 009 430 14 XXX			
450	119	269	355	396	800	23	0.72	MICL 009 450 14 XXX			
470	125	282	372	414	838	24	0.75	MICL 009 470 14 XXX			
490	131	295	388	433	875	24	0.78	MICL 009 490 14 XXX			
MICL	009	070	18	13	30	40	45	90	5	0.22	MICL 009 070 18 XXX
		080		17	38	50	56	113	6	0.26	MICL 009 080 18 XXX
		090		20	45	60	67	135	6	0.29	MICL 009 090 18 XXX
		100		24	53	70	78	158	7	0.32	MICL 009 100 18 XXX
		110		27	61	80	89	180	7	0.35	MICL 009 110 18 XXX
		120		30	68	90	100	203	8	0.38	MICL 009 120 18 XXX
		130		34	76	100	111	225	8	0.42	MICL 009 130 18 XXX
		150		40	91	120	134	271	9	0.48	MICL 009 150 18 XXX
		170		47	106	140	156	316	10	0.54	MICL 009 170 18 XXX
		190		54	121	160	178	360	11	0.61	MICL 009 190 18 XXX
		210		61	137	180	201	406	13	0.67	MICL 009 210 18 XXX
		230		67	152	200	223	451	14	0.74	MICL 009 230 18 XXX
		250		74	167	220	245	496	15	0.80	MICL 009 250 18 XXX
		270		81	182	240	268	541	16	0.86	MICL 009 270 18 XXX
		290		87	197	260	290	586	17	0.93	MICL 009 290 18 XXX
		310		94	212	280	312	631	18	0.99	MICL 009 310 18 XXX
		330		101	228	300	334	676	19	1.06	MICL 009 330 18 XXX
		350		108	243	320	357	722	20	1.12	MICL 009 350 18 XXX
		370		114	258	340	379	767	21	1.18	MICL 009 370 18 XXX
		390		121	273	360	401	811	22	1.25	MICL 009 390 18 XXX
410	128	288	379	423	856	23	1.31	MICL 009 410 18 XXX			
430	135	304	400	446	902	24	1.38	MICL 009 430 18 XXX			
450	141	319	420	468	947	25	1.44	MICL 009 450 18 XXX			
470	148	334	440	491	992	26	1.50	MICL 009 470 18 XXX			
490	155	349	460	513	1037	27	1.57	MICL 009 490 18 XXX			

* measured in accordance with EN442

fill in grille code |

MINI CANAL

HEIGHT 009



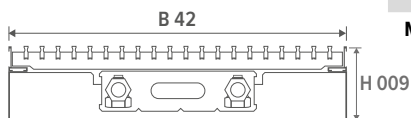
M I C L	009	HEIGHT H cm	LENGTH L cm	WIDTH B cm	HEATING Room temperature 20°C					WEIGHT kg	WATER CONTENT L	ORDER CODE
					35/30 Watts	45/40 Watts	50/45 Watts	55/45 Watts	75/65 Watts			
		070	26		18	40	53	59	119	7	0.22	MICL 009 070 26 XXX
		080			22	50	66	73	148	8	0.26	MICL 009 080 26 XXX
		090			27	60	79	88	178	8	0.29	MICL 009 090 26 XXX
		100			31	70	92	102	207	9	0.32	MICL 009 100 26 XXX
		110			35	80	105	117	237	10	0.35	MICL 009 110 26 XXX
		120			40	90	118	132	267	10	0.38	MICL 009 120 26 XXX
		130			44	100	131	146	296	11	0.42	MICL 009 130 26 XXX
		150			53	120	158	176	356	13	0.48	MICL 009 150 26 XXX
		170			62	140	184	205	415	14	0.54	MICL 009 170 26 XXX
		190			71	160	210	234	474	15	0.61	MICL 009 190 26 XXX
		210			80	180	237	264	534	17	0.67	MICL 009 210 26 XXX
		230			89	200	263	293	593	18	0.74	MICL 009 230 26 XXX
		250			97	220	289	322	652	20	0.80	MICL 009 250 26 XXX
		270			106	239	315	352	711	21	0.86	MICL 009 270 26 XXX
		290			115	260	342	381	771	23	0.93	MICL 009 290 26 XXX
		310			124	279	368	411	830	24	0.99	MICL 009 310 26 XXX
		330			133	299	394	440	889	25	1.06	MICL 009 330 26 XXX
		350			141	319	420	469	948	27	1.12	MICL 009 350 26 XXX
		370			150	339	447	499	1008	28	1.18	MICL 009 370 26 XXX
		390			159	359	473	528	1067	30	1.25	MICL 009 390 26 XXX
		410			168	379	499	557	1126	31	1.31	MICL 009 410 26 XXX
		430			177	399	526	587	1186	33	1.38	MICL 009 430 26 XXX
		450			186	419	552	616	1245	34	1.44	MICL 009 450 26 XXX
		470			195	439	578	645	1304	35	1.50	MICL 009 470 26 XXX
		490			203	459	604	674	1363	37	1.57	MICL 009 490 26 XXX
		070	34		23	52	68	76	154	8	0.34	MICL 009 070 34 XXX
		080			29	65	86	95	193	9	0.38	MICL 009 080 34 XXX
		090			34	78	102	114	231	10	0.43	MICL 009 090 34 XXX
		100			40	91	119	133	269	11	0.48	MICL 009 100 34 XXX
		110			46	103	136	152	307	12	0.53	MICL 009 110 34 XXX
		120			52	116	153	171	346	13	0.58	MICL 009 120 34 XXX
		130			57	130	171	190	385	14	0.62	MICL 009 130 34 XXX
		150			69	156	205	229	462	15	0.72	MICL 009 150 34 XXX
		170			80	181	239	266	538	17	0.82	MICL 009 170 34 XXX
		190			92	207	273	304	615	19	0.91	MICL 009 190 34 XXX
		210			103	233	307	342	692	21	1.01	MICL 009 210 34 XXX
		230			115	259	341	380	769	22	1.10	MICL 009 230 34 XXX
		250			126	285	375	418	846	24	1.20	MICL 009 250 34 XXX
		270			138	311	409	457	923	26	1.30	MICL 009 270 34 XXX
		290			149	337	443	495	1000	28	1.39	MICL 009 290 34 XXX
		310			161	362	477	532	1076	30	1.49	MICL 009 310 34 XXX
		330			172	389	512	571	1154	31	1.58	MICL 009 330 34 XXX
		350			184	414	546	609	1231	33	1.68	MICL 009 350 34 XXX
		370			195	440	579	646	1307	35	1.78	MICL 009 370 34 XXX
		390			207	466	614	685	1385	37	1.87	MICL 009 390 34 XXX
		410			218	492	648	723	1461	38	1.97	MICL 009 410 34 XXX
		430			230	518	682	761	1538	40	2.06	MICL 009 430 34 XXX
		450			241	544	716	799	1615	42	2.16	MICL 009 450 34 XXX
		470			253	570	750	837	1692	44	2.26	MICL 009 470 34 XXX
		490			264	596	784	875	1769	45	2.35	MICL 009 490 34 XXX

* measured in accordance with EN442

fill in grille code |

MINI CANAL

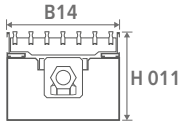
HEIGHT 009



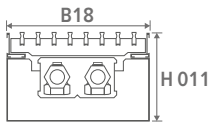
MICL	HEIGHT H cm	LENGTH L cm	WIDTH B cm	HEATING Room temperature 20°C					WEIGHT kg	WATER CONTENT L	ORDER CODE
				35/30 Watts	45/40 Watts	50/45 Watts	55/45 Watts	75/65 Watts			
	009	070	42	33	75	98	110	222	10	0.44	MICL 009 070 42 XXX
		080		41	94	123	138	278	11	0.50	MICL 009 080 42 XXX
		090		50	112	148	165	333	12	0.57	MICL 009 090 42 XXX
		100		58	131	172	192	388	13	0.63	MICL 009 100 42 XXX
		110		66	150	197	220	445	14	0.69	MICL 009 110 42 XXX
		120		75	168	222	247	500	15	0.76	MICL 009 120 42 XXX
		130		83	187	246	275	555	16	0.82	MICL 009 130 42 XXX
		150		99	224	295	329	666	18	0.95	MICL 009 150 42 XXX
		170		116	262	345	385	778	20	1.07	MICL 009 170 42 XXX
		190		133	299	394	439	888	22	1.20	MICL 009 190 42 XXX
		210		149	337	443	495	1000	25	1.32	MICL 009 210 42 XXX
		230		166	374	493	550	1111	27	1.45	MICL 009 230 42 XXX
		250		182	411	541	604	1221	29	1.58	MICL 009 250 42 XXX
		270		199	449	591	659	1333	31	1.70	MICL 009 270 42 XXX
		290		216	486	640	714	1444	33	1.83	MICL 009 290 42 XXX
		310		232	524	689	769	1555	35	1.95	MICL 009 310 42 XXX
		330		249	561	739	824	1666	37	2.08	MICL 009 330 42 XXX
		350		265	598	788	879	1777	39	2.21	MICL 009 350 42 XXX
		370		282	636	837	934	1888	41	2.33	MICL 009 370 42 XXX
		390		298	673	886	989	1999	44	2.46	MICL 009 390 42 XXX
		410		315	711	936	1044	2111	46	2.58	MICL 009 410 42 XXX
		430		332	748	985	1099	2221	48	2.71	MICL 009 430 42 XXX
		450		348	785	1034	1153	2332	50	2.84	MICL 009 450 42 XXX
		470		365	823	1083	1209	2444	52	2.96	MICL 009 470 42 XXX
		490		381	860	1133	1264	2555	54	3.09	MICL 009 490 42 XXX

* measured in accordance with EN442

fill in grille code |



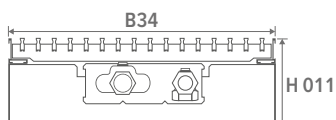
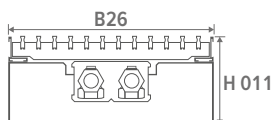
opposite end connections



MICL	HEIGHT H cm	LENGTH L cm	WIDTH B cm	HEATING Room temperature 20°C					WEIGHT kg	WATER CONTENT L	ORDER CODE
				35/30 Watts	45/40 Watts	50/45 Watts	55/45 Watts	75/65 Watts			
MICL	011	070	14	13	29	39	43	87	5	0.11	MICL 011 070 14 XXX
				16	37	48	54	109	5	0.13	MICL 011 080 14 XXX
				20	44	58	65	131	6	0.14	MICL 011 090 14 XXX
				23	52	68	76	153	6	0.16	MICL 011 100 14 XXX
				26	59	78	87	175	7	0.18	MICL 011 110 14 XXX
				29	66	87	97	197	7	0.19	MICL 011 120 14 XXX
				33	73	97	108	218	8	0.21	MICL 011 130 14 XXX
				39	88	116	130	262	9	0.24	MICL 011 150 14 XXX
				46	103	136	151	306	10	0.27	MICL 011 170 14 XXX
				52	117	155	173	349	11	0.30	MICL 011 190 14 XXX
				59	132	174	194	393	12	0.34	MICL 011 210 14 XXX
				65	147	194	216	437	13	0.37	MICL 011 230 14 XXX
				72	162	213	237	480	14	0.40	MICL 011 250 14 XXX
				78	176	232	259	524	15	0.43	MICL 011 270 14 XXX
				85	191	252	281	568	16	0.46	MICL 011 290 14 XXX
				91	206	271	303	612	17	0.50	MICL 011 310 14 XXX
				98	221	290	324	655	18	0.53	MICL 011 330 14 XXX
104	235	310	346	699	19	0.56	MICL 011 350 14 XXX				
111	250	329	368	743	20	0.59	MICL 011 370 14 XXX				
117	265	348	389	786	21	0.62	MICL 011 390 14 XXX				
124	279	368	411	830	22	0.66	MICL 011 410 14 XXX				
130	294	387	432	874	23	0.69	MICL 011 430 14 XXX				
137	309	407	454	917	24	0.72	MICL 011 450 14 XXX				
143	324	426	475	961	25	0.75	MICL 011 470 14 XXX				
150	338	446	497	1005	26	0.78	MICL 011 490 14 XXX				
MICL	011	070	18	16	35	46	51	104	5	0.22	MICL 011 070 18 XXX
				19	43	57	64	129	6	0.26	MICL 011 080 18 XXX
				23	52	69	77	155	7	0.29	MICL 011 090 18 XXX
				27	61	80	90	181	7	0.32	MICL 011 100 18 XXX
				31	70	92	102	207	8	0.35	MICL 011 110 18 XXX
				35	78	103	115	233	8	0.38	MICL 011 120 18 XXX
				39	87	115	128	259	9	0.42	MICL 011 130 18 XXX
				46	104	137	153	310	10	0.48	MICL 011 150 18 XXX
				54	122	161	180	363	11	0.54	MICL 011 170 18 XXX
				62	139	184	205	414	12	0.61	MICL 011 190 18 XXX
				70	157	207	230	466	13	0.67	MICL 011 210 18 XXX
				77	174	230	256	518	15	0.74	MICL 011 230 18 XXX
				85	192	252	281	569	16	0.80	MICL 011 250 18 XXX
				93	209	276	308	622	17	0.86	MICL 011 270 18 XXX
				100	227	298	333	673	18	0.93	MICL 011 290 18 XXX
				108	244	321	359	725	19	0.99	MICL 011 310 18 XXX
				116	262	344	384	777	20	1.06	MICL 011 330 18 XXX
124	279	367	410	828	21	1.12	MICL 011 350 18 XXX				
131	297	391	436	881	23	1.18	MICL 011 370 18 XXX				
139	314	413	461	932	24	1.25	MICL 011 390 18 XXX				
147	331	436	487	984	25	1.31	MICL 011 410 18 XXX				
155	349	459	512	1036	26	1.38	MICL 011 430 18 XXX				
162	366	482	538	1087	27	1.44	MICL 011 450 18 XXX				
170	384	505	564	1140	28	1.50	MICL 011 470 18 XXX				
178	401	528	589	1191	29	1.57	MICL 011 490 18 XXX				

* measured in accordance with EN442

fill in grille code |



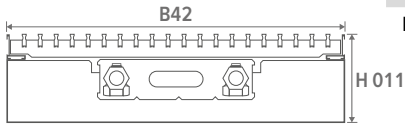
MICL	HEIGHT H	LENGTH L	WIDTH B	HEATING Room temperature 20°C					WEIGHT kg	WATER CONTENT L	ORDER CODE
				35/30 Watts	45/40 Watts	50/45 Watts	55/45 Watts	75/65 Watts			
MICL	011	070	26	21	47	62	69	140	7	0.22	MICL 011 070 26 XXX
		080		26	59	78	87	175	8	0.26	MICL 011 080 26 XXX
		090		31	71	93	104	210	9	0.29	MICL 011 090 26 XXX
		100		37	82	109	121	245	9	0.32	MICL 011 100 26 XXX
		110		42	94	124	138	279	10	0.35	MICL 011 110 26 XXX
		120		47	106	139	155	314	11	0.38	MICL 011 120 26 XXX
		130		52	117	155	173	349	12	0.42	MICL 011 130 26 XXX
		150		63	141	186	208	420	13	0.48	MICL 011 150 26 XXX
		170		73	165	217	242	489	15	0.54	MICL 011 170 26 XXX
		190		83	188	248	276	559	16	0.61	MICL 011 190 26 XXX
		210		94	212	279	311	629	18	0.67	MICL 011 210 26 XXX
		230		104	235	310	346	699	19	0.74	MICL 011 230 26 XXX
		250		115	259	341	380	769	21	0.80	MICL 011 250 26 XXX
		270		125	282	372	415	839	22	0.86	MICL 011 270 26 XXX
		290		136	306	403	450	909	24	0.93	MICL 011 290 26 XXX
		310		146	329	434	484	978	25	0.99	MICL 011 310 26 XXX
		330		156	353	465	518	1048	27	1.06	MICL 011 330 26 XXX
		350		167	377	496	553	1119	28	1.12	MICL 011 350 26 XXX
		370		177	400	527	588	1188	30	1.18	MICL 011 370 26 XXX
		390		188	424	558	622	1258	31	1.25	MICL 011 390 26 XXX
410	198	447	589	657	1328	33	1.31	MICL 011 410 26 XXX			
430	209	471	620	691	1398	34	1.38	MICL 011 430 26 XXX			
450	219	494	651	726	1468	36	1.44	MICL 011 450 26 XXX			
470	229	517	681	760	1537	37	1.50	MICL 011 470 26 XXX			
490	240	541	713	795	1608	39	1.57	MICL 011 490 26 XXX			
MICL	011	070	34	27	61	81	90	182	9	0.34	MICL 011 070 34 XXX
		080		34	76	101	112	227	10	0.38	MICL 011 080 34 XXX
		090		41	92	121	135	272	11	0.43	MICL 011 090 34 XXX
		100		47	107	141	157	317	12	0.48	MICL 011 100 34 XXX
		110		54	122	161	180	363	12	0.53	MICL 011 110 34 XXX
		120		61	138	181	202	409	13	0.58	MICL 011 120 34 XXX
		130		68	153	201	225	454	14	0.62	MICL 011 130 34 XXX
		150		81	183	241	269	544	16	0.72	MICL 011 150 34 XXX
		170		95	214	282	315	636	18	0.82	MICL 011 170 34 XXX
		190		108	244	322	359	726	20	0.91	MICL 011 190 34 XXX
		210		122	275	362	404	817	22	1.01	MICL 011 210 34 XXX
		230		136	306	403	449	908	24	1.10	MICL 011 230 34 XXX
		250		149	336	442	494	998	25	1.20	MICL 011 250 34 XXX
		270		163	367	483	539	1090	27	1.30	MICL 011 270 34 XXX
		290		176	397	523	584	1180	29	1.39	MICL 011 290 34 XXX
		310		190	428	563	629	1271	31	1.49	MICL 011 310 34 XXX
		330		203	459	604	674	1362	33	1.58	MICL 011 330 34 XXX
		350		217	489	644	718	1452	35	1.68	MICL 011 350 34 XXX
		370		230	520	684	764	1544	37	1.78	MICL 011 370 34 XXX
		390		244	550	724	808	1634	38	1.87	MICL 011 390 34 XXX
410	257	581	765	853	1725	40	1.97	MICL 011 410 34 XXX			
430	271	611	805	898	1816	42	2.06	MICL 011 430 34 XXX			
450	284	642	845	943	1906	44	2.16	MICL 011 450 34 XXX			
470	298	673	886	988	1998	46	2.26	MICL 011 470 34 XXX			
490	312	703	926	1033	2088	48	2.35	MICL 011 490 34 XXX			

* measured in accordance with EN442

fill in grille code |

MINI CANAL

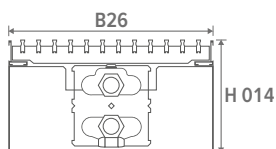
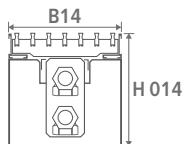
HEIGHT 011



MICL	HEIGHT H cm	LENGTH L cm	WIDTH B cm	HEATING Room temperature 20°C					WEIGHT kg	WATER CONTENT L	ORDER CODE
				35/30 Watts	45/40 Watts	50/45 Watts	55/45 Watts	75/65 Watts			
	011	070	42	38	86	113	126	255	10	0.44	MICL 011 070 42 XXX
		080		48	107	141	158	319	11	0.50	MICL 011 080 42 XXX
		090		57	129	170	189	383	12	0.57	MICL 011 090 42 XXX
		100		67	150	198	221	447	14	0.63	MICL 011 100 42 XXX
		110		76	172	226	252	510	15	0.69	MICL 011 110 42 XXX
		120		86	193	254	284	574	16	0.76	MICL 011 120 42 XXX
		130		95	215	283	316	638	17	0.82	MICL 011 130 42 XXX
		150		114	258	340	379	766	19	0.95	MICL 011 150 42 XXX
		170		133	301	396	442	893	21	1.07	MICL 011 170 42 XXX
		190		152	344	453	505	1021	24	1.20	MICL 011 190 42 XXX
		210		171	387	509	568	1148	26	1.32	MICL 011 210 42 XXX
		230		190	430	566	631	1276	28	1.45	MICL 011 230 42 XXX
		250		210	473	622	694	1404	30	1.58	MICL 011 250 42 XXX
		270		229	515	679	757	1531	32	1.70	MICL 011 270 42 XXX
		290		248	559	735	821	1659	35	1.83	MICL 011 290 42 XXX
		310		267	601	792	883	1786	37	1.95	MICL 011 310 42 XXX
		330		286	644	849	947	1914	39	2.08	MICL 011 330 42 XXX
		350		305	687	905	1010	2042	41	2.21	MICL 011 350 42 XXX
		370		324	730	962	1073	2169	43	2.33	MICL 011 370 42 XXX
		390		343	773	1018	1136	2297	46	2.46	MICL 011 390 42 XXX
		410		362	816	1075	1199	2424	48	2.58	MICL 011 410 42 XXX
		430		381	859	1131	1262	2552	50	2.71	MICL 011 430 42 XXX
		450		400	902	1188	1326	2680	52	2.84	MICL 011 450 42 XXX
		470		419	945	1244	1388	2807	54	2.96	MICL 011 470 42 XXX
		490		438	988	1301	1452	2935	57	3.09	MICL 011 490 42 XXX

*measured in accordance with EN442

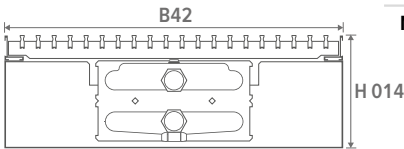
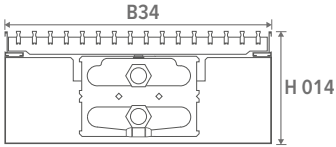
fill in grille code |



MICL	HEIGHT H cm	LENGTH L cm	WIDTH B cm	HEATING Room temperature 20°C					WEIGHT kg	WATER CONTENT L	ORDER CODE
				35/30 Watts	45/40 Watts	50/45 Watts	55/45 Watts	75/65 Watts			
MICL	014	070	14	15	33	44	49	99	5	0.22	MICL 014 070 14 XXX
		080		19	42	55	61	124	6	0.26	MICL 014 080 14 XXX
		090		22	50	66	74	149	7	0.29	MICL 014 090 14 XXX
		100		26	59	77	86	174	7	0.32	MICL 014 100 14 XXX
		110		30	67	88	98	198	8	0.35	MICL 014 110 14 XXX
		120		33	75	99	110	223	9	0.38	MICL 014 120 14 XXX
		130		37	83	110	123	248	9	0.42	MICL 014 130 14 XXX
		150		44	100	132	147	298	10	0.48	MICL 014 150 14 XXX
		170		52	117	154	172	347	12	0.54	MICL 014 170 14 XXX
		190		59	134	176	196	397	13	0.61	MICL 014 190 14 XXX
		210		67	150	198	221	446	14	0.67	MICL 014 210 14 XXX
		230		74	167	220	245	496	15	0.74	MICL 014 230 14 XXX
		250		81	184	242	270	546	17	0.80	MICL 014 250 14 XXX
		270		89	200	264	294	595	18	0.86	MICL 014 270 14 XXX
		290		96	217	286	319	645	19	0.93	MICL 014 290 14 XXX
		310		104	234	308	343	694	20	0.99	MICL 014 310 14 XXX
		330		111	250	330	368	744	22	1.06	MICL 014 330 14 XXX
		350		119	267	352	393	794	23	1.12	MICL 014 350 14 XXX
		370		126	284	374	417	843	24	1.18	MICL 014 370 14 XXX
		390		133	301	396	442	893	25	1.25	MICL 014 390 14 XXX
410	141	317	418	466	942	26	1.31	MICL 014 410 14 XXX			
430	148	334	440	491	992	28	1.38	MICL 014 430 14 XXX			
450	156	351	462	515	1042	29	1.44	MICL 014 450 14 XXX			
470	163	367	484	540	1091	30	1.50	MICL 014 470 14 XXX			
490	170	384	506	564	1141	31	1.57	MICL 014 490 14 XXX			
MICL	014	070	26	26	58	76	85	172	8	0.46	MICL 014 070 26 XXX
		080		32	72	95	106	215	9	0.52	MICL 014 080 26 XXX
		090		39	87	114	128	258	10	0.59	MICL 014 090 26 XXX
		100		45	101	133	149	301	11	0.65	MICL 014 100 26 XXX
		110		51	116	153	171	345	12	0.72	MICL 014 110 26 XXX
		120		58	131	172	192	388	13	0.78	MICL 014 120 26 XXX
		130		64	145	191	213	431	14	0.85	MICL 014 130 26 XXX
		150		77	174	229	255	516	15	0.98	MICL 014 150 26 XXX
		170		90	203	267	298	603	17	1.11	MICL 014 170 26 XXX
		190		103	232	305	341	689	19	1.24	MICL 014 190 26 XXX
		210		116	261	344	383	775	21	1.37	MICL 014 210 26 XXX
		230		129	290	382	426	861	23	1.50	MICL 014 230 26 XXX
		250		141	319	420	468	947	25	1.63	MICL 014 250 26 XXX
		270		154	348	458	511	1034	26	1.76	MICL 014 270 26 XXX
		290		167	377	496	553	1119	28	1.89	MICL 014 290 26 XXX
		310		180	406	535	597	1206	30	2.02	MICL 014 310 26 XXX
		330		193	435	573	639	1292	32	2.15	MICL 014 330 26 XXX
		350		206	464	610	681	1377	34	2.28	MICL 014 350 26 XXX
		370		219	493	649	724	1464	35	2.41	MICL 014 370 26 XXX
		390		231	522	687	767	1550	37	2.54	MICL 014 390 26 XXX
410	244	551	725	809	1636	39	2.67	MICL 014 410 26 XXX			
430	257	580	763	852	1722	41	2.80	MICL 014 430 26 XXX			
450	270	609	802	894	1808	43	2.93	MICL 014 450 26 XXX			
470	283	638	840	937	1895	44	3.06	MICL 014 470 26 XXX			
490	296	667	878	979	1980	46	3.19	MICL 014 490 26 XXX			

* measured in accordance with EN442

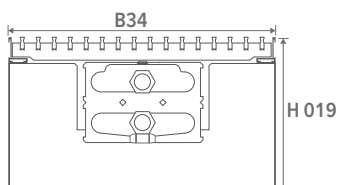
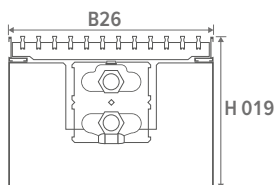
fill in grille code |



HEIGHT H cm	LENGTH L cm	WIDTH B cm	HEATING Room temperature 20°C					WEIGHT kg	WATER CONTENT L	ORDER CODE
			35/30 Watts	45/40 Watts	50/45 Watts	55/45 Watts	75/65 Watts			
MICL 014	070	34	35	79	104	116	235	10	0.69	MICL 014 070 34 XXX
	080		44	99	130	145	294	11	0.78	MICL 014 080 34 XXX
	090		53	119	156	175	353	12	0.88	MICL 014 090 34 XXX
	100		61	138	182	203	411	13	0.98	MICL 014 100 34 XXX
	110		70	158	208	232	470	15	1.08	MICL 014 110 34 XXX
	120		79	178	235	262	529	16	1.18	MICL 014 120 34 XXX
	130		88	198	260	290	587	17	1.27	MICL 014 130 34 XXX
	150		105	237	313	349	705	19	1.47	MICL 014 150 34 XXX
	170		123	277	364	407	822	21	1.67	MICL 014 170 34 XXX
	190		140	316	417	465	940	24	1.86	MICL 014 190 34 XXX
	210		158	356	469	523	1057	26	2.06	MICL 014 210 34 XXX
	230		175	396	521	581	1175	28	2.25	MICL 014 230 34 XXX
	250		193	435	573	639	1292	30	2.45	MICL 014 250 34 XXX
	270		210	474	625	697	1409	33	2.65	MICL 014 270 34 XXX
	290		228	514	677	755	1527	35	2.84	MICL 014 290 34 XXX
	310		245	553	729	813	1644	37	3.04	MICL 014 310 34 XXX
	330		263	593	781	872	1762	39	3.23	MICL 014 330 34 XXX
	350		281	633	833	930	1880	42	3.43	MICL 014 350 34 XXX
	370		298	672	885	988	1997	44	3.63	MICL 014 370 34 XXX
390		316	712	938	1046	2115	46	3.82	MICL 014 390 34 XXX	
410		333	751	989	1104	2232	48	4.02	MICL 014 410 34 XXX	
430		351	791	1041	1162	2349	50	4.21	MICL 014 430 34 XXX	
450		368	831	1094	1220	2467	53	4.41	MICL 014 450 34 XXX	
470		386	870	1146	1278	2584	55	4.61	MICL 014 470 34 XXX	
490		403	910	1198	1336	2702	57	4.80	MICL 014 490 34 XXX	
MICL 014	070	42	47	107	141	157	317	12	0.92	MICL 014 070 42 XXX
	080		59	133	176	196	396	13	1.06	MICL 014 080 42 XXX
	090		71	160	211	235	475	15	1.19	MICL 014 090 42 XXX
	100		83	187	246	275	555	16	1.32	MICL 014 100 42 XXX
	110		94	213	281	313	633	17	1.45	MICL 014 110 42 XXX
	120		106	240	316	353	713	19	1.58	MICL 014 120 42 XXX
	130		118	267	351	392	792	20	1.72	MICL 014 130 42 XXX
	150		142	320	421	470	950	23	1.98	MICL 014 150 42 XXX
	170		165	373	491	548	1108	26	2.24	MICL 014 170 42 XXX
	190		189	427	562	627	1267	28	2.51	MICL 014 190 42 XXX
	210		213	480	632	705	1425	31	2.77	MICL 014 210 42 XXX
	230		236	533	702	783	1583	34	3.04	MICL 014 230 42 XXX
	250		260	586	772	862	1742	36	3.30	MICL 014 250 42 XXX
	270		284	640	842	940	1900	39	3.56	MICL 014 270 42 XXX
	290		307	693	912	1018	2058	42	3.83	MICL 014 290 42 XXX
	310		331	746	983	1097	2217	44	4.09	MICL 014 310 42 XXX
	330		354	800	1053	1175	2375	47	4.36	MICL 014 330 42 XXX
	350		378	853	1123	1253	2533	50	4.62	MICL 014 350 42 XXX
	370		402	906	1193	1332	2692	52	4.88	MICL 014 370 42 XXX
390		425	960	1263	1410	2850	55	5.15	MICL 014 390 42 XXX	
410		449	1013	1334	1488	3008	58	5.41	MICL 014 410 42 XXX	
430		473	1066	1404	1566	3167	60	5.68	MICL 014 430 42 XXX	
450		496	1119	1474	1645	3325	63	5.94	MICL 014 450 42 XXX	
470		520	1173	1544	1723	3483	66	6.20	MICL 014 470 42 XXX	
490		544	1226	1615	1801	3642	69	6.47	MICL 014 490 42 XXX	

* measured in accordance with EN442

fill in grille code |



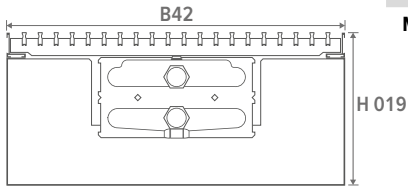
MICL	HEIGHT H cm	LENGTH L cm	WIDTH B cm	HEATING Room temperature 20°C					WEIGHT kg	WATER CONTENT L	ORDER CODE
				35/30 Watts	45/40 Watts	50/45 Watts	55/45 Watts	75/65 Watts			
MICL	019	070	26	29	66	87	97	196	9	0.46	MICL 019 070 26 XXX
		080		37	82	109	121	245	10	0.52	MICL 019 080 26 XXX
		090		44	99	130	145	293	11	0.59	MICL 019 090 26 XXX
		100		51	115	152	169	342	12	0.65	MICL 019 100 26 XXX
		110		59	132	174	194	392	13	0.72	MICL 019 110 26 XXX
		120		66	148	195	218	440	14	0.78	MICL 019 120 26 XXX
		130		73	165	217	242	489	15	0.85	MICL 019 130 26 XXX
		150		88	198	260	290	587	17	0.98	MICL 019 150 26 XXX
		170		102	231	304	339	685	19	1.11	MICL 019 170 26 XXX
		190		117	263	347	387	782	21	1.24	MICL 019 190 26 XXX
		210		131	297	391	436	881	23	1.37	MICL 019 210 26 XXX
		230		146	329	434	484	978	25	1.50	MICL 019 230 26 XXX
		250		161	362	477	532	1076	27	1.63	MICL 019 250 26 XXX
		270		175	395	520	581	1174	29	1.76	MICL 019 270 26 XXX
		290		190	428	563	629	1271	31	1.89	MICL 019 290 26 XXX
		310		204	461	607	678	1370	33	2.02	MICL 019 310 26 XXX
		330		219	494	650	726	1467	35	2.15	MICL 019 330 26 XXX
		350		234	527	694	774	1565	37	2.28	MICL 019 350 26 XXX
		370		248	560	737	823	1663	39	2.41	MICL 019 370 26 XXX
		390		263	593	780	871	1760	41	2.54	MICL 019 390 26 XXX
410		277	626	824	920	1859	43	2.67	MICL 019 410 26 XXX		
430		292	659	867	967	1956	45	2.80	MICL 019 430 26 XXX		
450		307	692	911	1016	2054	47	2.93	MICL 019 450 26 XXX		
470		321	725	954	1064	2152	49	3.06	MICL 019 470 26 XXX		
490		336	758	997	1113	2250	51	3.19	MICL 019 490 26 XXX		
MICL	019	070	34	40	89	117	131	265	11	0.69	MICL 019 070 34 XXX
		080		50	112	147	164	332	12	0.78	MICL 019 080 34 XXX
		090		59	134	176	196	397	14	0.88	MICL 019 090 34 XXX
		100		69	156	205	229	463	15	0.98	MICL 019 100 34 XXX
		110		79	178	235	262	530	16	1.08	MICL 019 110 34 XXX
		120		89	201	264	295	596	17	1.18	MICL 019 120 34 XXX
		130		99	223	293	327	662	18	1.27	MICL 019 130 34 XXX
		150		119	268	352	393	795	21	1.47	MICL 019 150 34 XXX
		170		138	312	411	459	927	23	1.67	MICL 019 170 34 XXX
		190		158	357	469	524	1059	26	1.86	MICL 019 190 34 XXX
		210		178	401	528	590	1192	28	2.06	MICL 019 210 34 XXX
		230		198	446	587	655	1324	31	2.25	MICL 019 230 34 XXX
		250		217	491	646	721	1457	33	2.45	MICL 019 250 34 XXX
		270		237	535	705	786	1590	36	2.65	MICL 019 270 34 XXX
		290		257	579	763	851	1721	38	2.84	MICL 019 290 34 XXX
		310		277	624	822	917	1854	41	3.04	MICL 019 310 34 XXX
		330		297	669	881	983	1987	43	3.23	MICL 019 330 34 XXX
		350		316	713	939	1048	2119	45	3.43	MICL 019 350 34 XXX
		370		336	758	998	1114	2252	48	3.63	MICL 019 370 34 XXX
		390		356	803	1057	1179	2384	50	3.82	MICL 019 390 34 XXX
410		376	847	1115	1244	2516	53	4.02	MICL 019 410 34 XXX		
430		395	892	1174	1310	2649	55	4.21	MICL 019 430 34 XXX		
450		415	936	1233	1376	2781	58	4.41	MICL 019 450 34 XXX		
470		435	981	1292	1441	2914	60	4.61	MICL 019 470 34 XXX		
490		455	1026	1350	1507	3046	63	4.80	MICL 019 490 34 XXX		

* measured in accordance with EN442

fill in grille code |

MINI CANAL

HEIGHT 019



MICL	HEIGHT H cm	LENGTH L cm	WIDTH B cm	HEATING Room temperature 20°C					WEIGHT kg	WATER CONTENT L	ORDER CODE
				35/30 Watts	45/40 Watts	50/45 Watts	55/45 Watts	75/65 Watts			
	019	070	42	54	122	161	180	363	13	0.92	MICL 019 070 42 XXX
		080		68	153	202	225	455	15	1.06	MICL 019 080 42 XXX
		090		81	184	242	270	546	16	1.19	MICL 019 090 42 XXX
		100		95	214	282	315	636	18	1.32	MICL 019 100 42 XXX
		110		109	245	323	360	728	19	1.45	MICL 019 110 42 XXX
		120		122	275	363	405	818	20	1.58	MICL 019 120 42 XXX
		130		136	306	403	450	909	22	1.72	MICL 019 130 42 XXX
		150		163	367	484	540	1091	25	1.98	MICL 019 150 42 XXX
		170		190	429	564	630	1273	28	2.24	MICL 019 170 42 XXX
		190		217	490	645	720	1455	31	2.51	MICL 019 190 42 XXX
		210		244	551	726	810	1637	34	2.77	MICL 019 210 42 XXX
		230		272	612	806	900	1819	37	3.04	MICL 019 230 42 XXX
		250		299	674	887	990	2001	40	3.30	MICL 019 250 42 XXX
		270		326	735	967	1079	2182	42	3.56	MICL 019 270 42 XXX
		290		353	796	1048	1170	2365	45	3.83	MICL 019 290 42 XXX
		310		380	858	1129	1260	2547	48	4.09	MICL 019 310 42 XXX
		330		407	918	1209	1349	2728	51	4.36	MICL 019 330 42 XXX
		350		434	980	1290	1439	2910	54	4.62	MICL 019 350 42 XXX
		370		462	1041	1371	1529	3092	57	4.88	MICL 019 370 42 XXX
		390		489	1102	1451	1619	3274	60	5.15	MICL 019 390 42 XXX
		410		516	1164	1532	1709	3456	63	5.41	MICL 019 410 42 XXX
		430		543	1225	1613	1799	3638	66	5.68	MICL 019 430 42 XXX
		450		570	1286	1693	1889	3820	69	5.94	MICL 019 450 42 XXX
		470		597	1347	1774	1979	4001	72	6.20	MICL 019 470 42 XXX
		490		625	1409	1855	2070	4184	74	6.47	MICL 019 490 42 XXX

*measured in accordance with EN442

fill in grille code |

JRT-300



8751 050014

POWER SUPPLY

supply voltage

2 x AAA 1.5 V

OUTPUT / INPUT VOLTAGE

valve 24V DC contact

-

potential-free contact

1 (NO/NC)

input from keycard

-

input from window contact

-

fan (0 - 10 V DC)

-

manual 3-position speed controller

-

automatic mode

-

APPLICATIONS

2-pipe



manually (H/C)

-

auto (H/C) - water temperature sensor necessary

-

4-pipe



manually (H/C)

-

auto (H/C)

-

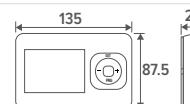
DIMENSIONS

for wall mounting

✓

for recessed-mounting

optional



POSITION

LCD display with backlight

✓

LCD touch screen with backlight

-

protection category IP20

✓

protection category IP30

-

Integrated CO2-sensor

-

humidity sensor

-

FEATURES

programmable time zones

✓

control via Wi-Fi (smartphone app)

-

fan start delay

-

continuous fan speed

-

temperature sensor 80 cm

optional

MINI CANAL

PARTS

COMPLETE UNIT WITHOUT GRILLE



STANDARD DELIVERY

Completely assembled dark-grey floor drain with:

- Low-H₂O heat exchanger, with dirt and dust repellent coating in graphite grey (RAL 7024)
- air vent(s) 1/8" and drain plug(s) 1/2"
- anchorage
- choice of aluminium frame (L-profile) or cover frame (Z-profile):
 - FNA: natural colour
 - FNC: lacquered
 - FBL: black
 - FDB: dark brown
 - FBR: brass-coloured

ORDER CODE

MICA 009 110 14 XXX

Colour frame
Width
Length
Height

FLOOR UNIT INCLUDING BRACKETS



STANDARD DELIVERY

Completely assembled dark-grey floor drain with:

- brackets
- anchorage

ORDER CODE DUCT

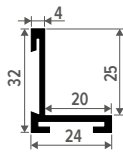
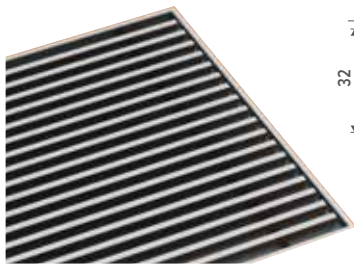
7601 009 110 14

Width
Length
Height



always add L-profile or Z-profile (cover) frame to the order, pre-assembled

FRAME



STANDARD DELIVERY

frame in anodized aluminium
lengths up to 6 metres in one piece
choice of aluminium frame:

- FNA: natural colour
- FNC: lacquered
- FBL: black
- FDB: dark brown
- FBR: brass-coloured

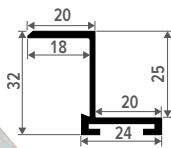
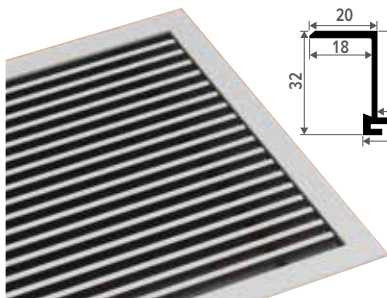
To ensure perfect adherence of the lacquer coating, an extremely wear-resistant and UV-resistant polyester lacquer coating of the highest quality is used.

ORDER CODE FRAME

FRML 070 14 XXX

Colour frame
FNA: natural colour
FNC: lacquered
FBL: black
FDB: dark brown
FBR: brass-coloured
Width
Length

Z PROFILE (COVER FRAME)



STANDARD DELIVERY

cover frame (Z-profile) in anodised aluminium
Lengte tot max. 6 meter uit één stuk.
choice of aluminium cover frame (Z-profile):

- FNA: natural colour
- FNC: lacquered
- FBL: black
- FDB: dark brown
- FBR: brass-coloured

To ensure perfect adherence of the lacquer coating, an extremely wear-resistant and UV-resistant polyester lacquer coating of the highest quality is used.

ORDER CODE Z PROFILE (COVER FRAME)

FRMZ 070 14 XXX

Colour Z profile (cover frame)
FNA: natural colour
FNC: lacquered
FBL: black
FDB: dark brown
FBR: brass-coloured
Width
Length

GRILLES



STANDARD DELIVERY

CHOICE OF

- Rigid aluminium grilles
- Designo rigid aluminium grilles
- Roll-up aluminium grilles
- Roll-up stainless steel grille
- Roll-up wooden grilles
- Designo roll-up wooden grilles

lengths up to 6 metres in one piece
length grille = length frame - 1.2 cm

ORDER CODE

GRIL 108.8 12.8 XXX

Grille
Width
Length

Dimensional tolerance width grille: +/- 2 mm

OVERVIEW GRILLES

CATEGORY 1



SNA
Rigid alu. natural

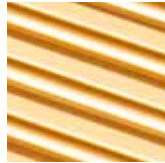


SBR
Rigid alu. Brass-coloured

CATEGORY 2



DNA
Designo Rigid alu. natural



DBR
Designo rigid alu. Brass-coloured



DDB
Designo rigid alu. Dark brown

CATEGORY 3



DMV
Designo roll-up wooden Merbau varnished

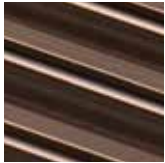


DON
Designo roll-up wooden oak natural

CATEGORY 4



RSS
roll-up stainless steel



SDB
Rigid alu. Dark brown



SBL
Rigid alu. Black



DBL
Designo rigid alu. Black



RMN
roll-up wooden Merbau natural



RMV
roll-up wooden Merbau varnished



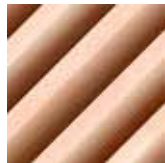
DOV
Designo roll-up wooden oak varnished



RBL
roll-up aluminium. Black



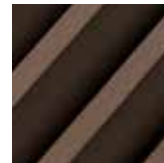
RBN
Roll-up wooden beech natural



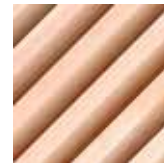
RBV
Roll-up wooden beech varnished



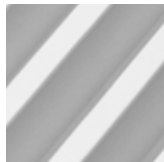
RBR
Roll-up aluminium. Brass-coloured



RDB
roll-up aluminium. Dark brown



DBV
Designo roll-up wooden beech varnished



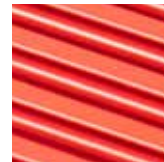
RNA
roll-up aluminium. natural



RON
roll-up wooden oak natural



ROV
roll-up wooden oak varnished



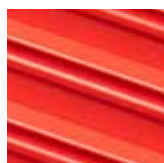
DNC XXX
Designo rigid coated alu



DBN
Designo roll-up wooden beech natural



DMN
Designo roll-up wooden Merbau natural



SNC XXX
rigid coated alu

HEAT EXCHANGER



STANDARD DELIVERY

- heat exchanger including air vent and drain cock
- **length of standard heat exchanger = L duct - 10 cm**



Only the length of the heat exchanger can be changed with regard to the standard supplied heat exchanger. The type of heat exchanger (04, 09, 14, etc.) cannot be changed. When ordering a shorter heat exchanger, always add 2 extra brackets to the order.

ORDER CODE SAME-END CONNECTION

5003 000 060 05 BS10

└── Type heat exchanger

└── Length heat exchanger

ORDER CODE OPPOSITE END CONNECTIONS

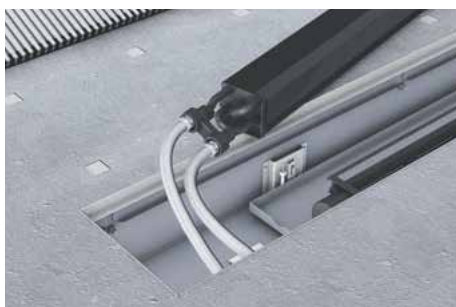
5004 000 060 04 BS10

└── Length heat exchanger

OVERVIEW TYPES OF HEAT EXCHANGERS

	WIDTH 14	WIDTH 18	WIDTH 26	WIDTH 34	WIDTH 42
HEIGHT 009	 Type 04 other end	 Type 09	 Type 09	 Type 14	 Type 19
HEIGHT 011	 Type 04 other end	 Type 09	 Type 09	 Type 14	 Type 19
HEIGHT 014	 Type 05		 Type 10	 Type 15	 Type 20
HEIGHT 019			 Type 10	 Type 15	 Type 20

STAINLESS STEEL FLEXIBLE CONNECTIONS 1/2"



STANDARD DELIVERY

- 2 stainless steel flexible connections 1/2"

Flexible connections may also be used to connect the heat exchangers. In this way, it will be easy to lift the heat exchanger, e. g. for annual cleaning. Just choose a heat exchanger which is one size shorter and order 2 extra brackets.

ORDER CODE FLEXIBELS

7990.068

The indicated outputs at ΔT 50 are exact values, measured in accordance with EN442. This table provides a calculated value using an average correction factor for all other ΔT outputs, valid for all dimensions.

Click www.jaga.com/selection-tools/ to download the calculation tools with the exact outputs. The online calculation tools are kept up to date with the most recent data. Minor output differences between printed tables and the different online calculation tools are therefore completely normal and within the margins of tolerance imposed by the standard.

AVERAGE CORRECTION FACTORS FOR STATIC PRODUCTS ACCORDING TO EN442 - 75/65/20°C

room temperature: 20°C

Average N-value: 1.36

TA	TR	65	60	55	50	45	40	35	30	25
75		1.00	0.93	0.85	0.77	0.69	0.61	0.52	0.42	0.31
70		0.94	0.87	0.79	0.72	0.64	0.56	0.48	0.39	0.28
65			0.80	0.74	0.67	0.60	0.52	0.44	0.35	0.25
60				0.68	0.61	0.55	0.48	0.40	0.32	0.23
55					0.56	0.50	0.43	0.36	0.29	0.20
50						0.44	0.38	0.32	0.25	0.18
45							0.34	0.28	0.22	0.15
40								0.24	0.19	0.13
35									0.15	0.10
30										0.07

room temperature: 24°C

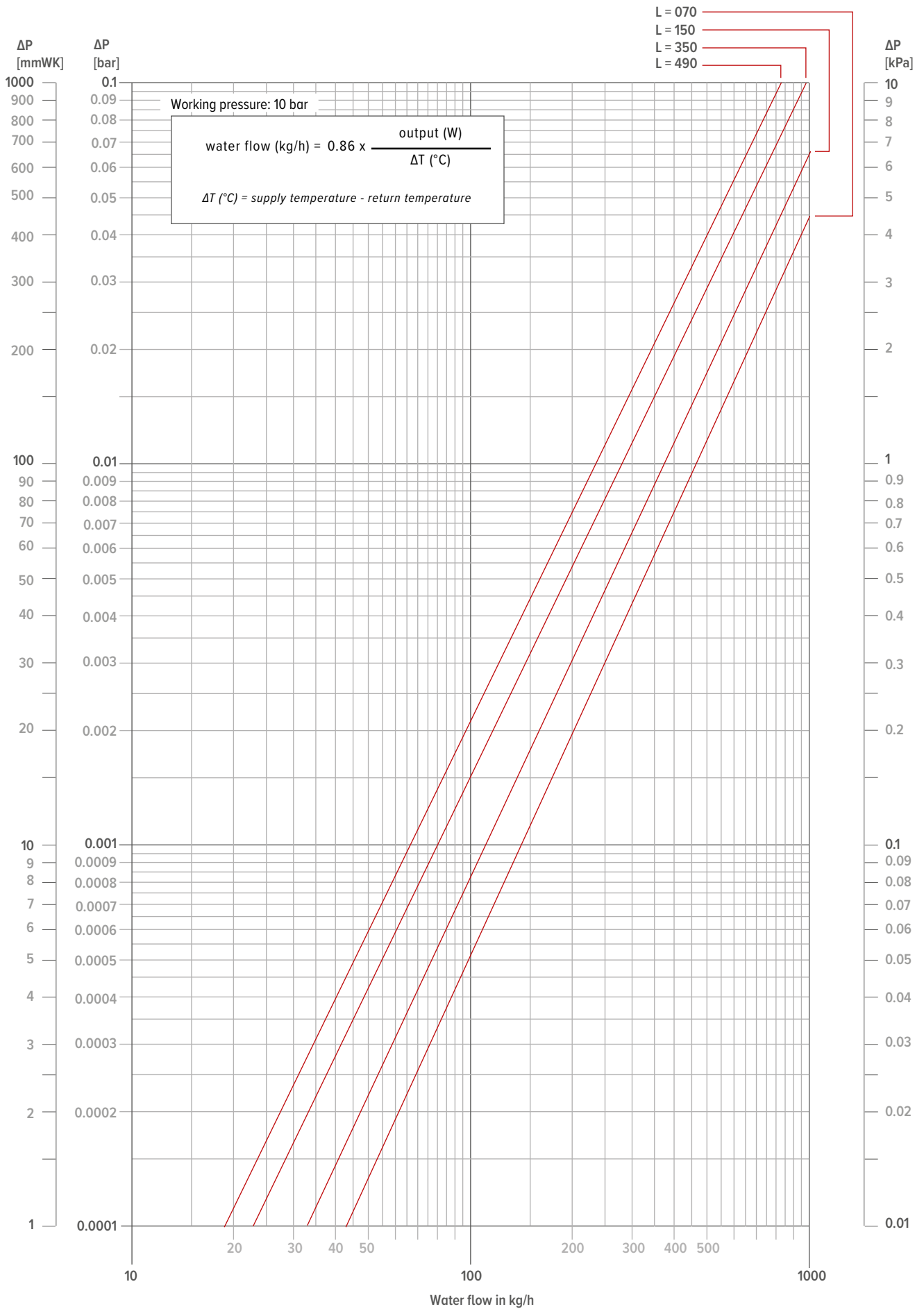
Average N-value: 1.36

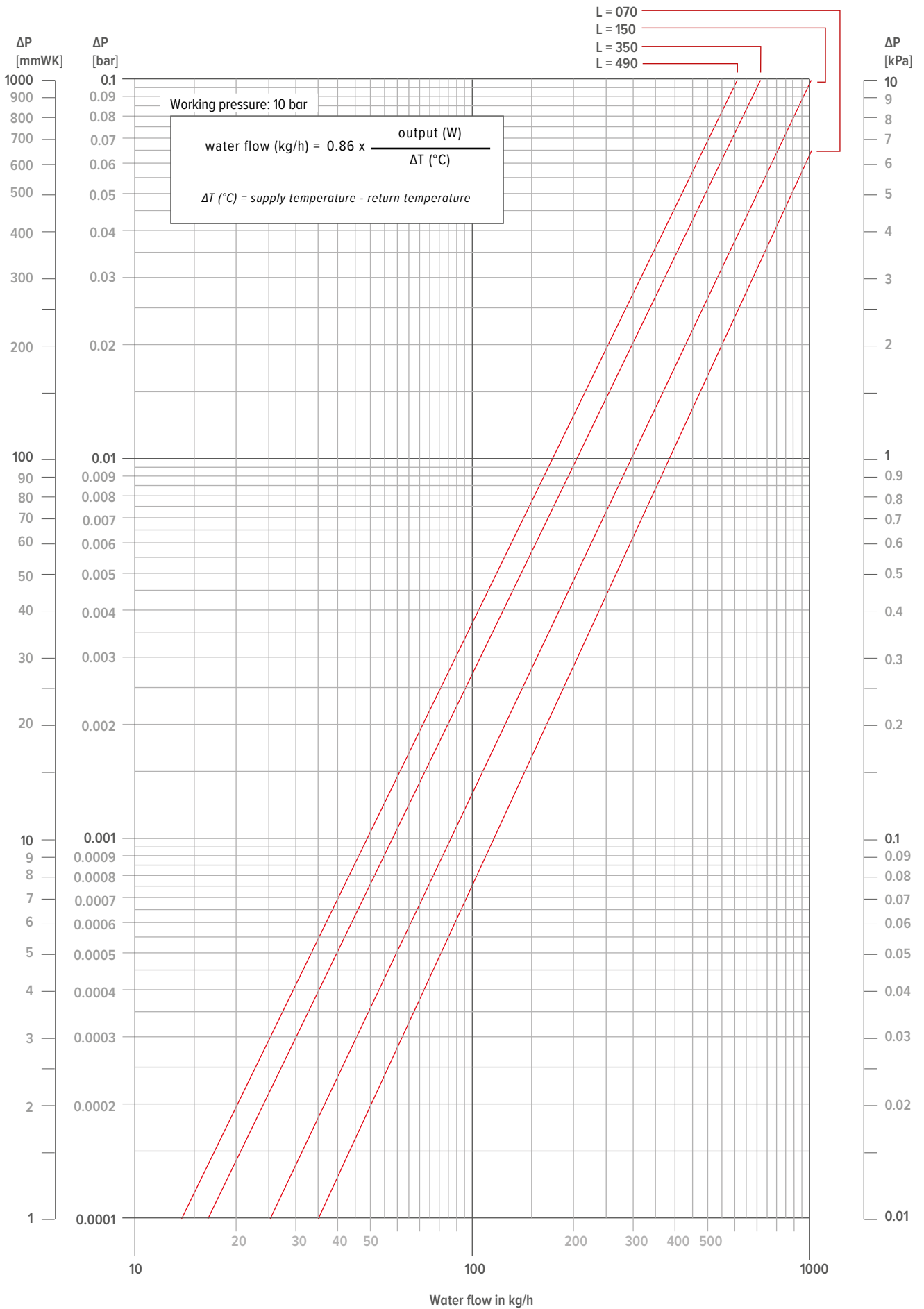
TA	TR	65	60	55	50	45	40	35	30	25
75		0.89	0.82	0.75	0.67	0.59	0.51	0.41	0.31	0.16
70		0.83	0.76	0.69	0.62	0.54	0.47	0.38	0.28	0.14
65			0.70	0.64	0.57	0.50	0.43	0.35	0.25	0.12
60				0.58	0.52	0.45	0.38	0.31	0.23	0.11
55					0.47	0.41	0.34	0.28	0.20	0.09
50						0.36	0.30	0.24	0.17	0.08
45							0.26	0.20	0.14	0.06
40								0.17	0.12	0.05
35									0.09	0.03
30										0.02

MINI CANAL

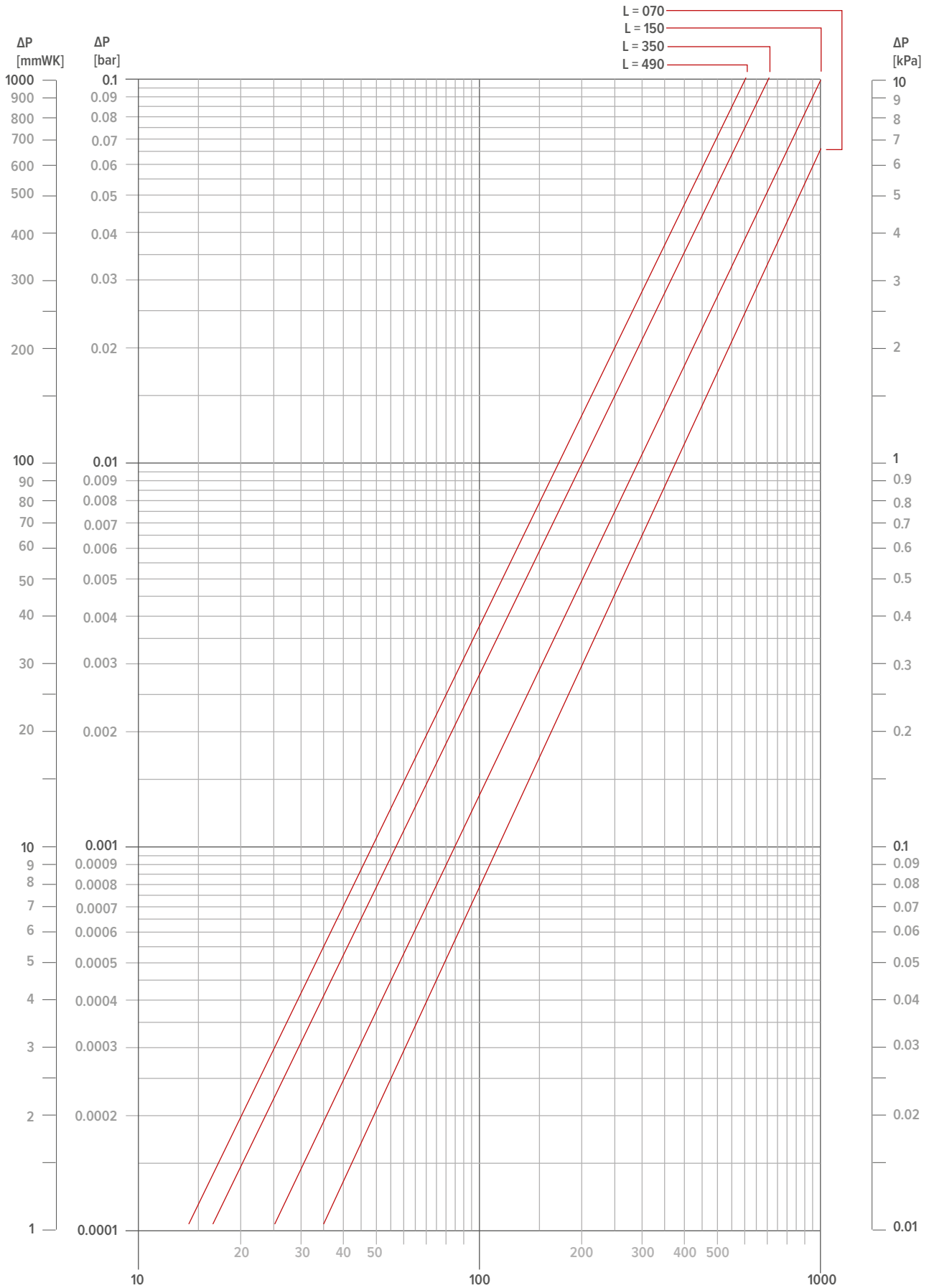
GUIDELINE FOR LIMITING FLOW NOISE

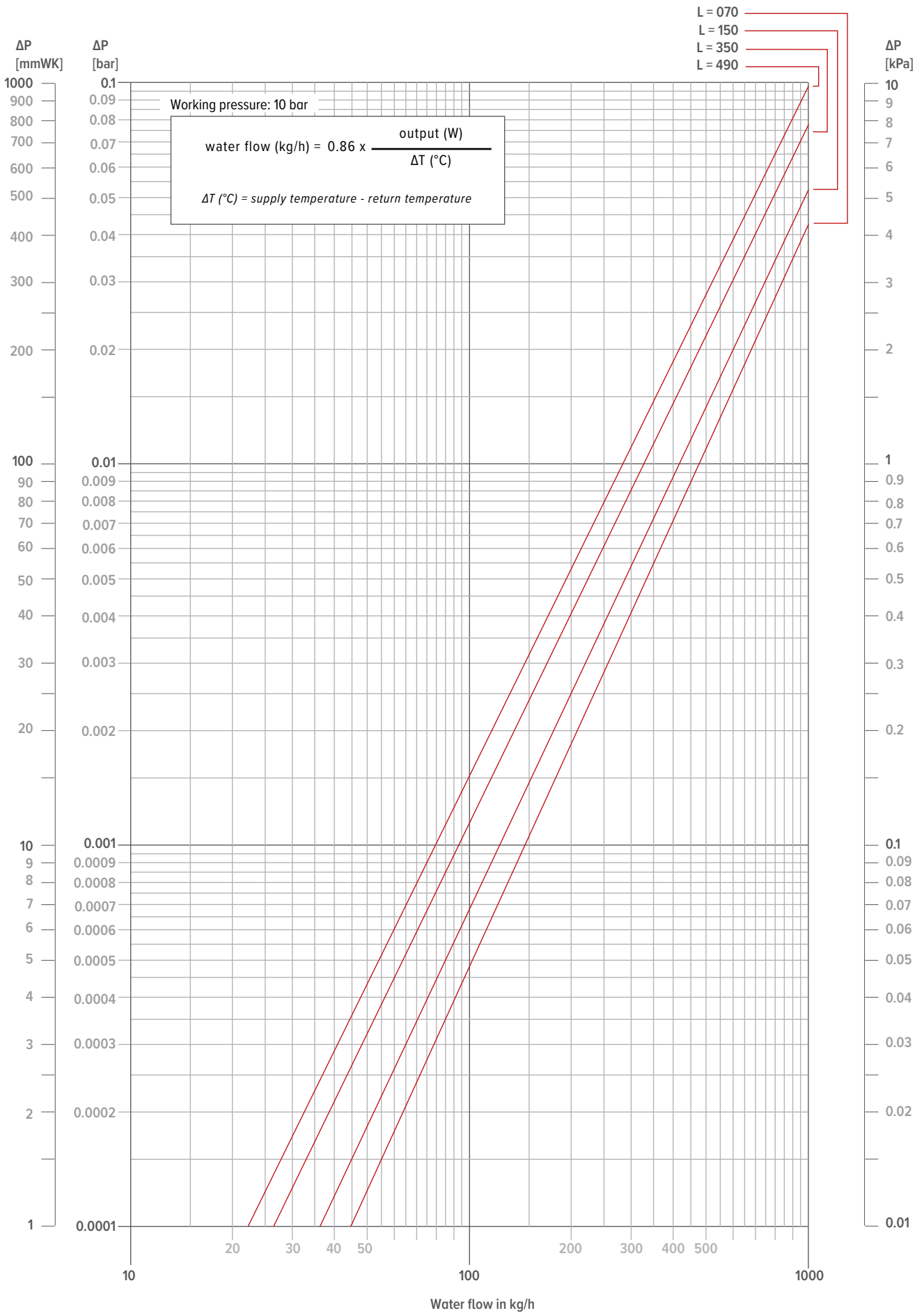
TUBE	outer Ø mm	Wall thick- ness mm	Max. water speed (EN10255) m/s	water content per metre l	max. water flow kg/h	Maximum power at ΔT (° C) (T supply - T return)						
						ΔT 30	ΔT 20	ΔT 10	ΔT 5	ΔT 4	ΔT 3	ΔT 2
						Watts	Watts	Watts	Watts	Watts	Watts	Watts
GALVANISED PIPE DIN 2440												
3/8 DN10 OD	17.2	2.35	0.40	0.12	173	6028	4019	2009	1005	804	603	402
1/2 DN15 OD	21.3	2.65	0.40	0.20	288	10046	6698	3349	1674	1340	1005	670
3/4 DN20 OD	26.9	2.65	0.42	0.37	559	19515	13010	6505	3253	2602	1952	1301
1 DN25 OD	33.7	3.25	0.49	0.58	1023	35690	23793	11897	5948	4759	3569	2379
1 1/4 DN32 OD	42.4	3.25	0.60	1.01	2182	76101	50734	25367	12684	10147	7610	5073
1 1/2 DN40 OD	48.3	3.25	0.66	1.37	3255	113549	75700	37850	18925	15140	11355	7570
2 DN50 OD	60.3	3.65	0.80	2.21	6365	222025	148017	74008	37004	29603	22203	14802
PRECISION METAL TUBE												
10/1	10	1.00	0.40	0.05	72	2512	1674	837	419	335	251	167
12/1	12	1.00	0.40	0.08	115	4019	2679	1340	670	536	402	268
14/1	14	1.00	0.40	0.11	158	5526	3684	1842	921	737	553	368
15/1	15	1.00	0.40	0.13	187	6530	4353	2177	1088	871	653	435
16/1	16	1.00	0.40	0.15	216	7535	5023	2512	1256	1005	753	502
18/1	18	1.00	0.40	0.20	288	10046	6698	3349	1674	1340	1005	670
22/1	22	1.00	0.40	0.31	446	15572	10381	5191	2595	2076	1557	1038
28/1	28	1.00	0.47	0.53	904	31522	21014	10507	5254	4203	3152	2101
RPE/ALU												
12/2	12	2.00	0.40	0.05	72	2512	1674	837	419	335	251	167
14/2	14	2.00	0.40	0.08	115	4019	2679	1340	670	536	402	268
16/1.5	16	1.50	0.40	0.13	187	6530	4353	2177	1088	871	653	435
16/2	16	2.00	0.40	0.11	158	5526	3684	1842	921	737	553	368
17/2	17	2.00	0.40	0.13	187	6530	4353	2177	1088	871	653	435
18/2	18	2.00	0.40	0.15	216	7535	5023	2512	1256	1005	753	502
20/2	20	2.00	0.40	0.20	288	10046	6698	3349	1674	1340	1005	670
26/3	26	3.00	0.40	0.31	446	15572	10381	5191	2595	2076	1557	1038
32/3	32	3.00	0.47	0.53	904	31522	21014	10507	5254	4203	3152	2101
40/3.5	40	3.50	0.56	0.86	1726	60220	40147	20073	10037	8029	6022	4015
50/4.25	50	4.25	0.66	1.35	3206	111824	74549	37275	18637	14910	11182	7455
63/5	63	5.00	0.80	2.21	6346	221359	147573	73786	36893	29515	22136	14757



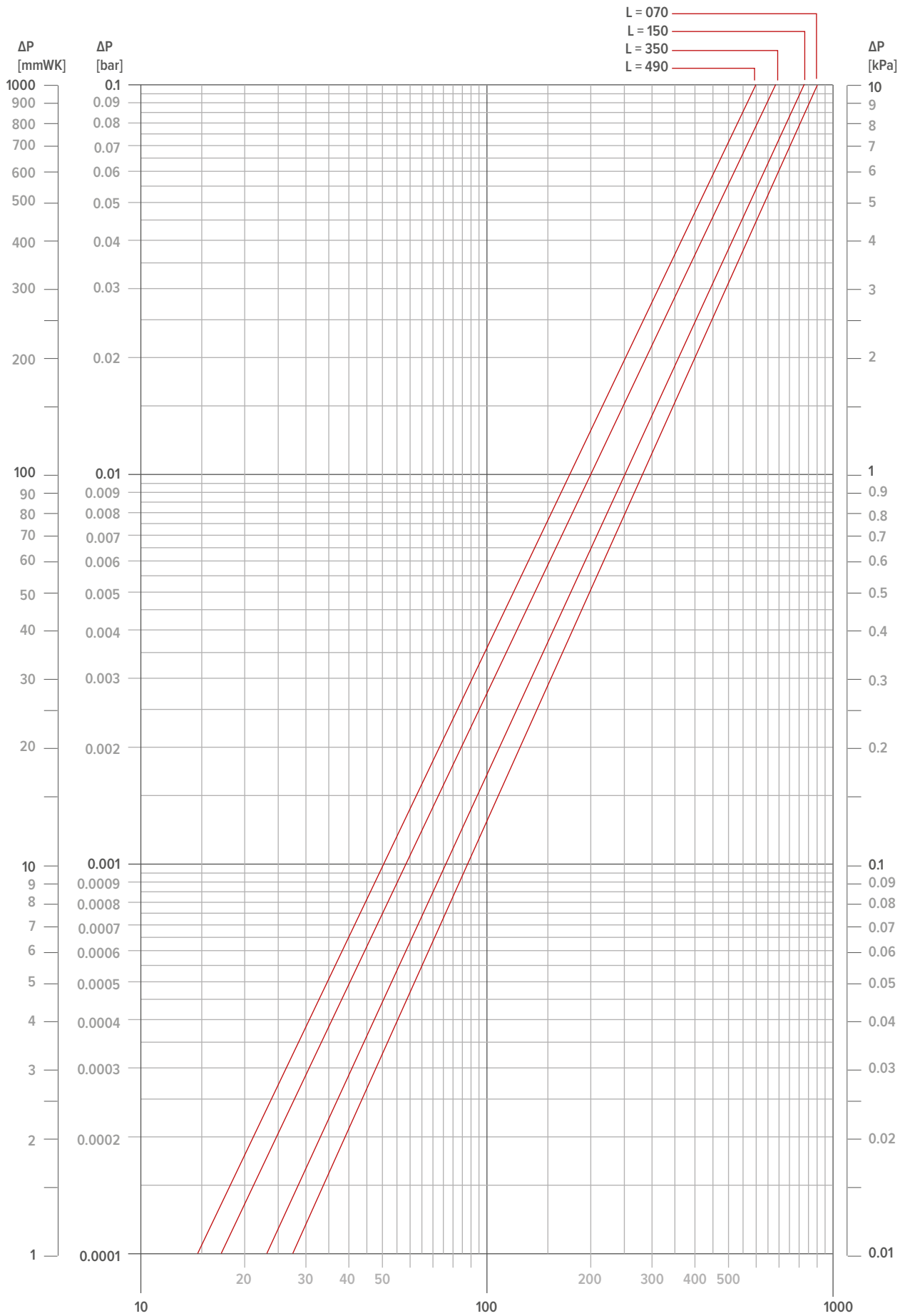


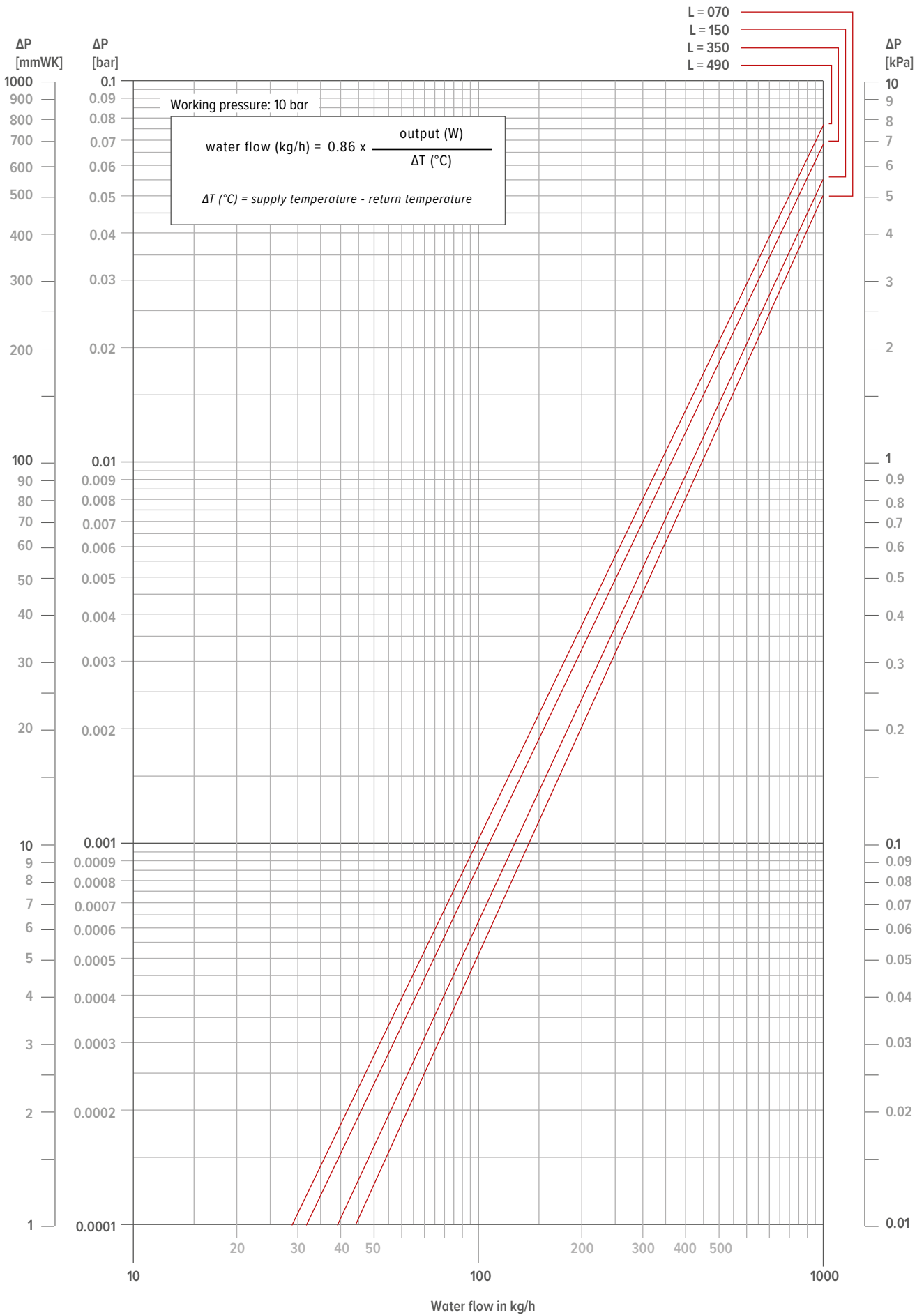
MINI CANAL

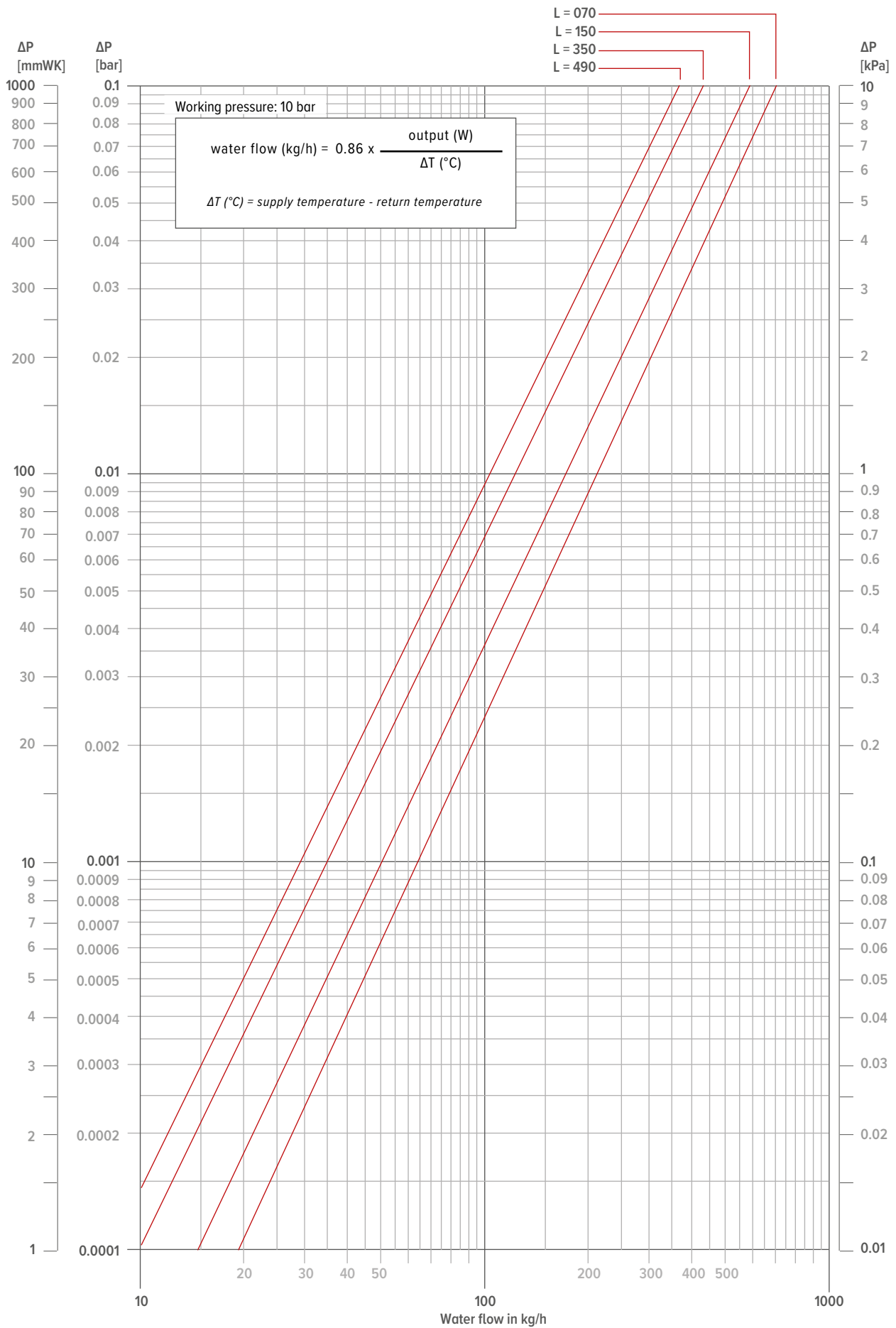


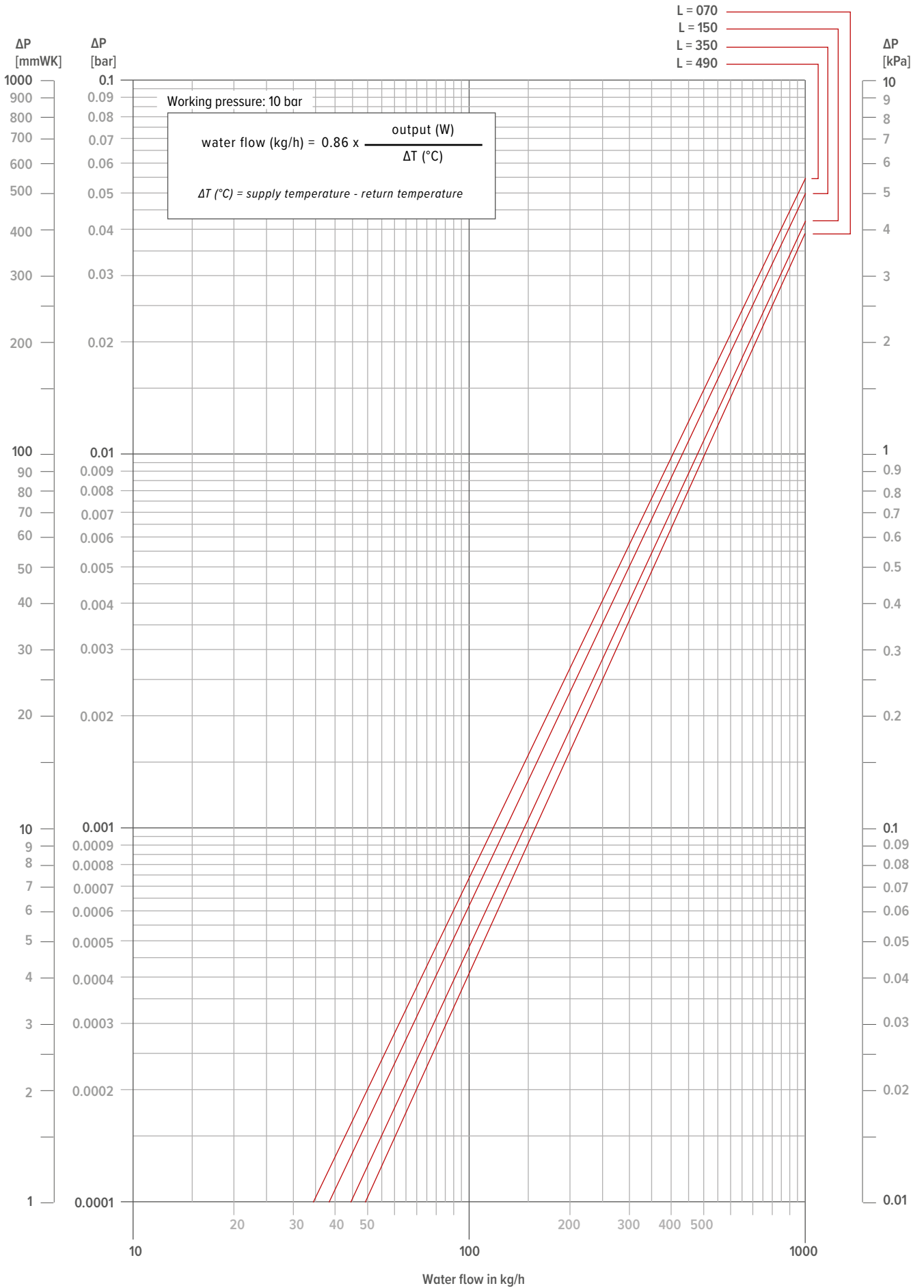


MINI CANAL









jaga
CLIMATE
DESIGNERS

SPECIALS



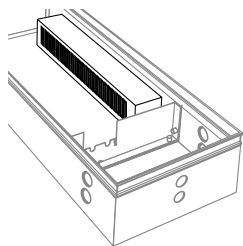


OVERVIEW SPECIALS

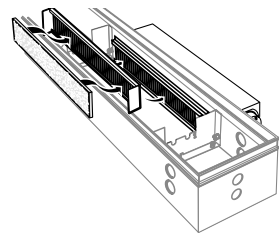
OTHER SYSTEMS

VENTILATION

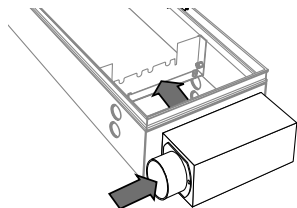
INTERNAL AIR SUPPLY COLLECTOR



EXTERIOR AIR SUPPLY COLLECTOR



AIR SUPPLY COLLECTOR AT HEADPIECE



SPECIAL VERSIONS

- custom made corners (with rigid and roll-up grilles)
- non standard lengths, widths and or heights
- other colours
- non standard fixings and height control systems
- heat exchangers with two sided connection for continuous construction



Mini Canal
custom made corners (Rigid aluminium grilles)
Aller Media Building - Copenhagen Denmark



Mini Canal
custom made corners
De Rotterdam - The Netherlands

Mini Canal
Customised length
CODE 7696.03

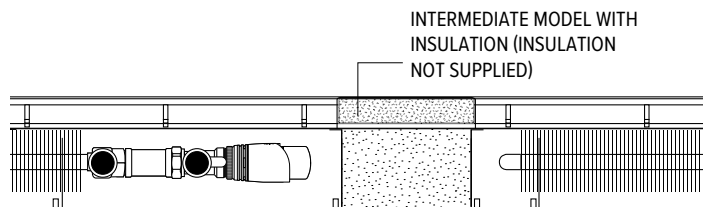
L = 215 cm



OVERVIEW SPECIALS

SPECIAL ACCESSORIES

- insulated baffle plates
- temporary intermediate module
- intermediate module for sockets
- continuous grille (frame connection)



Mini Canal
intermediate model with insulation (insulation not supplied)
Espace Seine - France



Mini Canal
insulated baffle plates
Santander Bank - Mönchengladbach



Mini Canal
insulated baffle plates
Santander Bank - Mönchengladbach



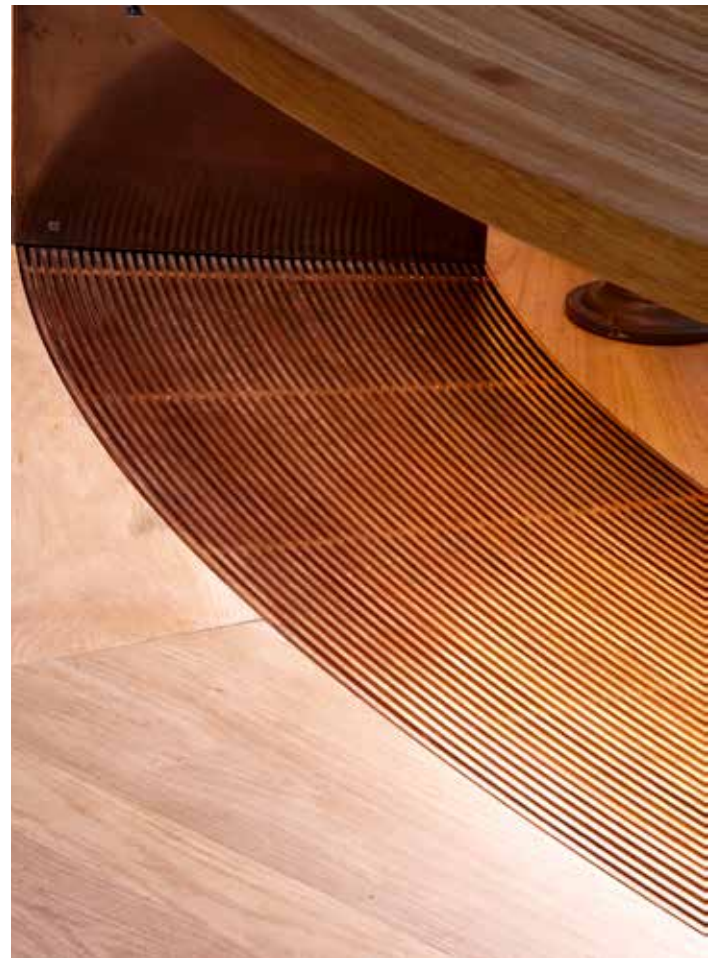
**Mini Canal
circular grille
University college -
London UK**

GRILLES & FRAMES

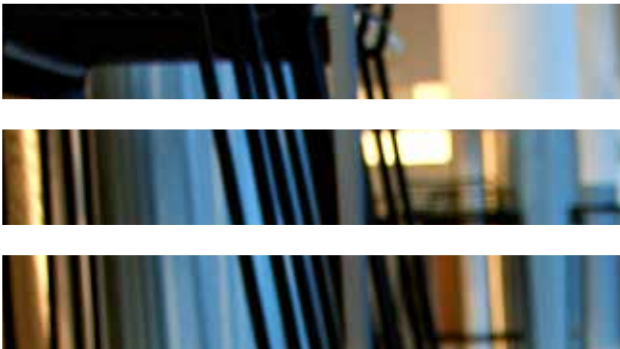
- reinforced grilles
- frame with flange
- other dimensions
- grille with round cutout
- grilles with circular cut-outs (e.g., around structural columns)
- adaptations for frames



**Mini Canal
grille with circular cut-out
Santander Bank - Mönchengladbach**



**Mini Canal
circular grille
University college -
London UK**



jaga CLIMATE
DESIGNERS

JAGA ESPAÑA CONVES TERMIC S.L.

¿Necesitas asesoramiento? ¡Consulta con nuestro departamento técnico!

+34 966 83 03 03
+34 673 51 45 87

proyectos@conves.es
jaga.info
jagaventilacion.com

BÉLGICA JAGA NV

Verbindingslaan 16
3590 Diepenbeek

+32 (0) 11 29 41 11

info@jaga.be
jaga.com